



Building a Global Uranium Company

# Corporate Presentation

John Borshoff – MD/CEO

**18 July 2023**

**DYL:** ASX / NSX (Namibia)  
**DYLLF:** OTCQX



[www.deepyellow.com.au](http://www.deepyellow.com.au)

# Disclaimer

This presentation has been prepared by Deep Yellow Limited ABN 97 006 391 948 (Company or Deep Yellow) for general information purposes only. The presentation does not constitute a prospectus or equivalent document nor does it constitute financial product or investment advice. It does not take into account the investment objectives, financial situation or particular needs of any investor.

The presentation is not and should not be considered as an offer or invitation to subscribe for or purchase any securities in the Company, or as an inducement to make an offer or invitation with respect to those securities. No agreement to subscribe for securities in the Company will be entered into on the basis of this presentation.

The presentation has been prepared by the Company based on information available to it. Due care and attention has been taken in the preparation of this presentation, however the information contained in this presentation (other than as specifically stated) has not been independently verified for the Company or their respective directors and officers, nor has it been audited. Accordingly, the Company does not warrant or represent that the information contained in this presentation is accurate or complete. To the fullest extent permitted by law, no liability, however arising, will be accepted by the Company, or their respective subsidiaries, directors, officers or advisers, for the fairness, accuracy or completeness of the information contained in the presentation. No responsibility or liability is assumed by the Company or their respective subsidiaries, directors, officers or advisers for updating any information in this document or to inform any recipient of any new or more accurate information or any errors of mis-descriptions of which the Company or any of its respective directors, officers or advisers may become aware.

## Financial information

All dollar values are in Australian dollars (A\$ or AUD) unless otherwise stated. Amounts, totals and change percentages are calculated on whole numbers and not the rounded amounts presented. This presentation includes certain historical financial information extracted from audited consolidated financial statements and information released to ASX (collectively, the Historical Financial Information). The Historical Financial Information is presented in an abbreviated form insofar as it does not include all the presentation and disclosures, statements or comparative information as required by the Australian Accounting Standards (AAS) and other mandatory professional reporting requirements applicable to general purpose financial reports prepared in accordance with the Corporations Act.

## Past performance

Past performance metrics and figures (including past share price performance of the Company), as well as pro forma financial information, included in this Presentation are given for illustrative purposes only and should not be relied

upon as (and is not) an indication of the Company or any other party's views on the Company's future financial performance or condition or prospects. Investors should note that past performance of the Company, including in relation to the historical trading price of the Company's shares, mineral resources, costs and other historical financial information cannot be relied upon as an indicator of (and provides no guidance, assurance or guarantee as to) future performance, including the future trading price of shares in the Company. The historical information included in this Presentation is, or is based on, information that has previously been released to the market.

## Forward looking statements

This presentation contains "forward-looking information" that is based on the Company's expectations, estimates and projections as of the date on which the statements were made. This forward-looking information includes, among other things, statements with respect to the pre-feasibility and any feasibility studies, the Company's business strategy, plan, development, objectives, performance, outlook, growth, cash flow, projections, targets and expectations, mineral resources, results of exploration and related expenses. Generally, this forward-looking information can be identified by the use of forward-looking terminology such as 'outlook', 'anticipate', 'project', 'target', 'likely', 'believe', 'estimate', 'expect', 'intend', 'may', 'would', 'could', 'should', 'scheduled', 'will', 'plan', 'forecast', 'evolve' and similar expressions. Persons reading this presentation are cautioned that such statements are only predictions, and that the Company's actual future results or performance may be materially different. There can be no assurance that actual outcomes will not differ materially from forward-looking statements. Forward-looking information is subject to known and unknown risks, uncertainties and other factors that may cause the Company's actual results, level of activity, performance or achievements to be materially different from those expressed or implied by such forward-looking information. Forward-looking information is developed based on assumptions about such risks, uncertainties and other factors which are subject to change, including but not limited to general business, economic, competitive, political and social uncertainties; the actual results of current exploration activities; conclusions of economic evaluations; changes in project parameters as plans continue to be refined; future prices of uranium; possible variations of ore grade or recovery rates; failure of plant, equipment or processes to operate as anticipated; accident, labour disputes and other risks of the mining industry; and delays in obtaining governmental approvals or financing or in the completion of development or construction activities. This list is not exhaustive of the factors that may affect the Company's forward-looking information. These and other factors should be considered carefully

and readers should not place undue reliance on such forward-looking information. The Company disclaim any intent or obligations to finalise, check, update or revise any forward-looking statements whether as a result of new information, estimates, or options, future events or results or otherwise, unless required to do so by law. Statements regarding plans with respect to the Company's mineral properties may contain forward-looking statements in relation to future matters that can be only made where the Company has a reasonable basis for making those statements. Competent Person Statements regarding plans with respect to the Company's mineral properties are forward looking statements. There can be no assurance that the Company's plans for development of its mineral properties will proceed as expected. There can be no assurance that the Company will be able to confirm the presence of mineral deposits, that any mineralisation will prove to be economic or that a mine will successfully be developed on any of the Company's mineral properties.

## Previously reported information

### Namibian Mineral Resources

This Presentation contains estimates of Mineral Resources, Ore Reserves, Production Targets and Exploration Results of the Company. The Company confirms that it is not aware of any new information or data that materially affects the information included in previous announcements and in particular that announcement released to the market on 2 February 2023 entitled 'Strong Results from Tumas Definitive Feasibility Study'. All material assumptions and technical parameters underpinning the Mineral Resource and Ore Reserve estimates continue to apply and have not materially changed.

### Australian Mineral Resources

Where the Company references exploration results, Mineral Resource and Ore Reserve estimates and ASX Announcements made previously it confirms that the relevant JORC Table 1 disclosures are included with them and that it is not aware of any new information or data that materially affects the information included in those ASX Announcements and in the case of Mineral Resources and Ore Reserves, that all material assumptions and technical parameters underpinning the estimates in the Announcements continue to apply and have not materially changed.

Refer to <https://www.deeptyellow.com.au/> or [www2.asx.com.au](http://www2.asx.com.au) for all prior announcements referenced.

## Rounding

A number of figures, amounts, percentages, estimates, calculations of value and fractions in this Presentation are subject to the effects of rounding. Accordingly, the actual calculation of these figures may differ from the figures set out in this Presentation.

# Deep Yellow – Building on Five Guiding Principles

- Decarbonisation
- Uranium Supply Shortage
- Nuclear Demand Outstripping Supply
- Capturing Growth
- ESG Focus





# Investment Case

- Nuclear Power will be key** to achieving global carbon emission targets
- Growing number of **Governments pivot energy strategy towards nuclear** – energy security/independence, clean baseload power
- Demand Outstripping Supply** – Existing producers and proposed new mines unable to respond in time & at current prices to meet demand requirements
- Uranium price will need significant increase** to incentivise/support new production – Spot price<sup>#</sup> **up 16%** (YTD), Mid-term **up 19%** (YTD), Long-term **up 6%** (YTD)
- Deep Yellow** – ideally positioned with **two advanced large-scale developments**, a portfolio of **exceptional exploration projects** supported by **strong leadership** and an **experienced team of builders and operators**

# Best Positioned Uranium Junior Globally



Deep Yellow has the **global diversity** seen as a necessity by off-takers – **located in two Tier-1 mining jurisdictions**



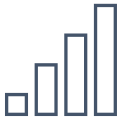
**Significant production capability** – once in production, Deep Yellow will be the largest pure-play uranium producer on the ASX – **production capacity +7Mlbs**



Led by a **highly experienced uranium team** with extensive knowledge across the operational lifecycle, offtake contracting and project finance complexities – **proven builders**



**Huge exploration upside** with potential to develop large scale projects within the Deep Yellow portfolio



**Delivering on vision** – 5 years successfully establishing a Tier-1 uranium platform and next 5 years focussing on execution to production



**Financially disciplined with strong governance**

# Balanced & Optimised Team

---

## **Board**

Steady deliberate program upgrading board with appropriate experience and skill levels to ensure operational, financial and governance excellence

---

## **Leadership**

Proven leadership understanding what needs to be developed for uranium supply in the post-Fukushima reconstruction era

---

## **Executive and Technical Management**

Proven capability in the uranium business and delivering across all facets of the industry from geological, development, operational, marketing, finance and governance

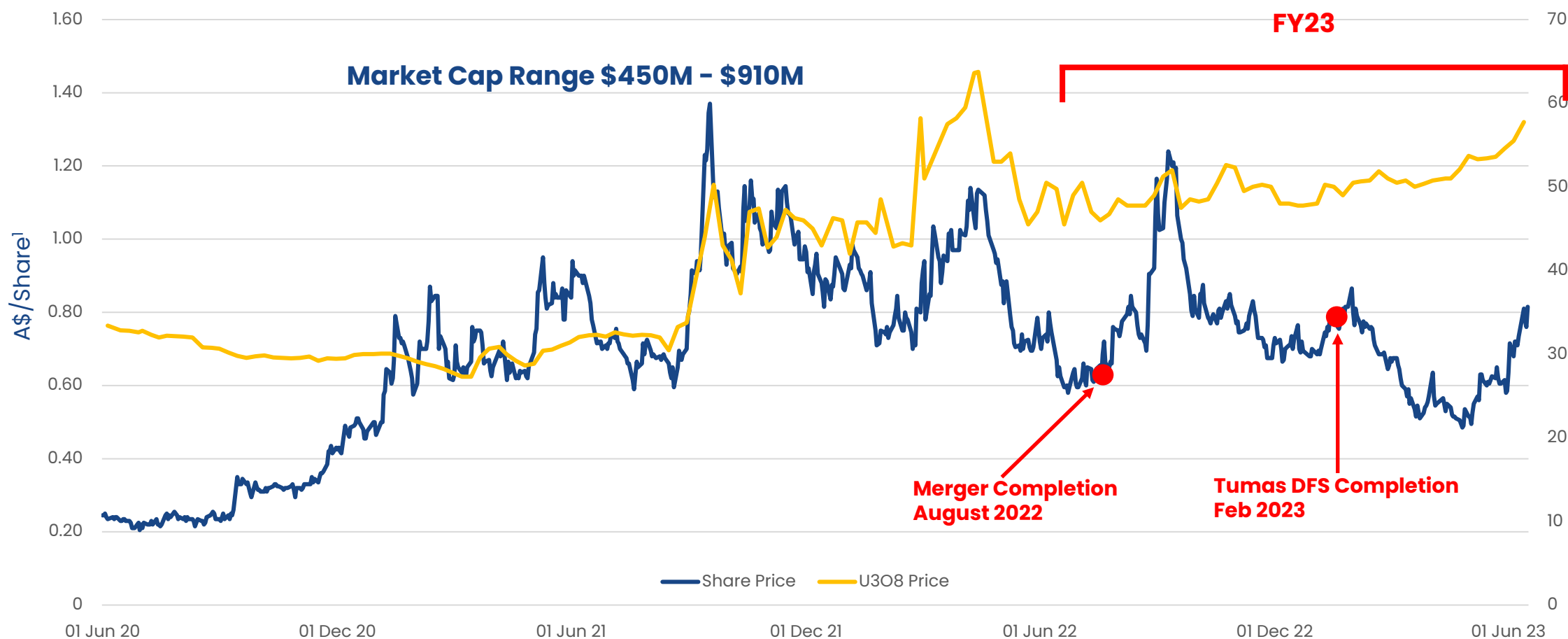
---

## **Culture**

Based on Respect, Responsibility, Reliability and Inclusivity

---

# Capital Structure – Performance FY23



**A\$570M**  
Market Cap

**Nil**  
Debt

**A\$48.5M**  
Cash<sup>2</sup>

**757.8M**  
Shares on Issue

## MAJORITY SHAREHOLDERS

**5%**  
Board and  
Management

**8%**  
Paradise  
Investments

**4%**  
Collines  
Investments

(1) As at June 2023 (2) As at 31 March 2023



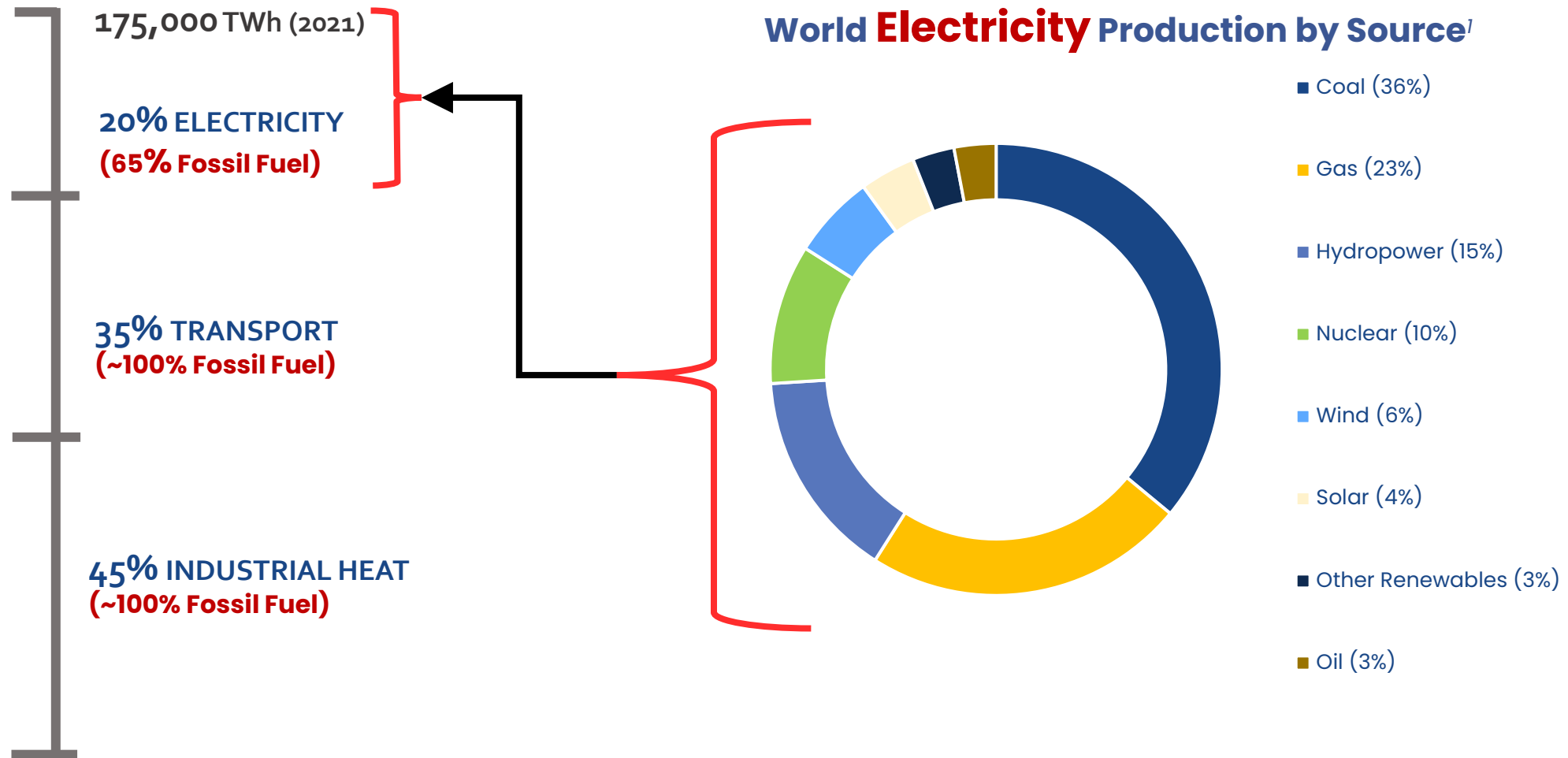
# 01

## Uranium is Critical for a Clean Energy Future



# Zero Emission Targets Cannot be Met Without Abundant Nuclear

Total Global Energy Equation - still 85% fossil fuelled!



Source: IEA 2021

# Nuclear Essential

**Nuclear becoming the clear winner** and the uranium supply industry is well-placed for significant growth and value uplift in global energy transition

Rapid demand uplift –most major economies in alignment demanding more nuclear. **This hasn't happened on such a broad scale since the oil shock days in the 1970s**

Nuclear is the **only viable option** to provide sufficient baseload power supply while achieving zero emission

**Renewables are only be part of the overall solution** as remain a stranded asset for 16-18 hours/day

**Nuclear is a 24/7 clean energy source:**

- Lowest carbon footprint (UNECE<sup>1</sup> analysis Sept 2021)
- Lowest material requirement
- Lowest land usage component
- Lowest cost per unit energy (IEA<sup>2</sup> analysis 2020)
- Best safety record of all technologies
- **Meets ESG demands**

# Land Footprint & Productivity of Nuclear, Solar & Wind

## One x 1GW Nuclear Reactor equivalent

- 2.5 Coal fired plants (each of 1GW)
- 3 Wind farms (each of 1GW)
- 4 Solar farms (each of 1GW)

To generate  
same  
electrical  
power as a  
1GW nuclear  
reactor

## Impact on land use & productivity –

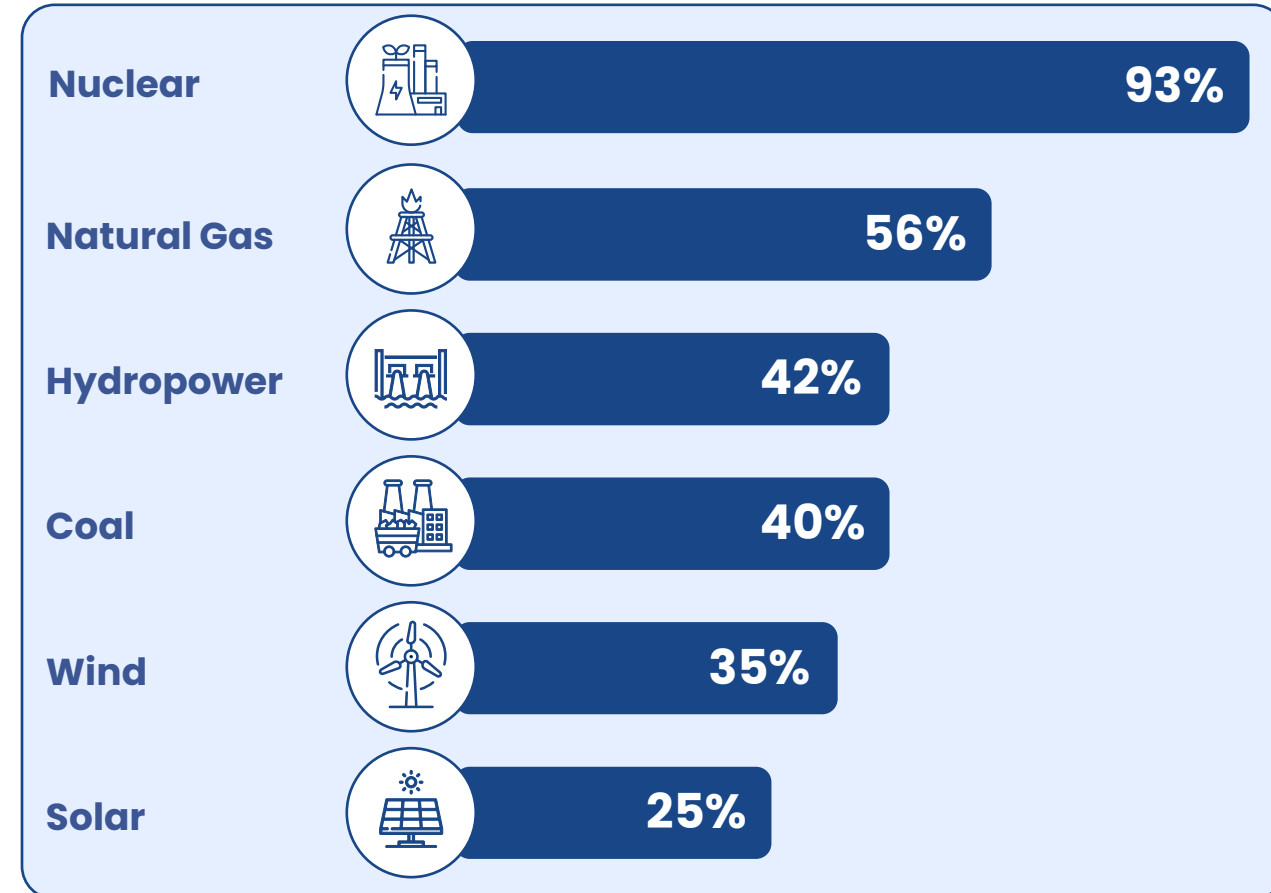
Land use for 1GW

- **Nuclear:** ~3km<sup>2</sup> – 1GW
- **Solar:** ~200km<sup>2</sup> (need ~4GW to produce 1GW)
- **Wind:** ~800km<sup>2</sup> (need ~3GW to produce 1GW)

## Renewable issues

- 1GW footprint 70x greater for solar and 300x for wind compared to a nuclear reactor
- Huge infrastructure cost (transmission lines)
- Huge quantities of mineral resources required
- Huge land use requirement
- End of life recycling/decommissioning poses yet to be resolved problems

## Capacity Factors by Energy Source



Source: U.S. Energy Information Administration (2020)

# World Nuclear Power Reactor Growth

Status May 2023<sup>1</sup>

## Proposed Reactors

323

## Reactors Planned

China (45); Russia (25);  
India (12); Others (18)

100

## Nuclear Reactors Globally

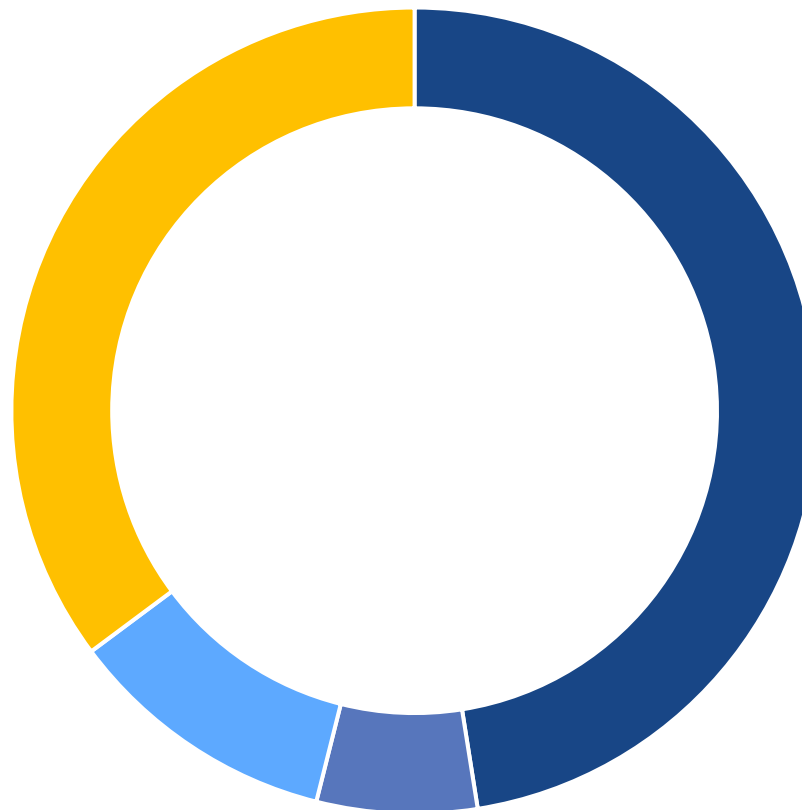
US (94); France (56); China (55)  
Russia (37); Japan (33);  
Korea (25); Other (136)

436

## Reactors Under Construction

China (23); India Turkey  
Russia Korea & Egypt (25);  
Others (12)

59



### RECENT ANNOUNCEMENTS

**CHINA:** 400GW by 2060 – **7x** increase (CGNC Chairman April '23)  
**US:** 300GW by 2050 – **3x** increase (DOE March '23)



# Demand – Governments Pivot Towards Nuclear

Increasing global concern for Energy Security,

Inability for renewables to deliver,

Ever increasing number of governments turning to nuclear power

- **Sweden changes policy** from “100% renewable electricity production” to “**100% Fossil Free**”
- **Belgium reverses decision to shut down reactors** in 2025, **now extends to 2036**
- **Bulgaria** announces **plans to build 4 new reactors**
- **France** Publishes Bill **to advance construction of 6–14 new generation reactors**
- **UK plans to approve one new nuclear reactor per year – targeting 25% nuclear by 2050**
- **US & India Nuclear Energy Cooperation – Negotiations for Westinghouse to build six reactors in India**

# Supply – Must be key Focus for a Growing Nuclear Demand

Degradation of uranium supply industry over time,

No new developments due to low prices

Long period of stagnation creating concerns industry unable to respond to future requirements

- Large, **long-life operations** have **ceased production**
- **No new production** without significant uranium price **incentivisation (US\$65/lb+)**
- **Global mining houses (Rio Tinto) have exited** the industry, leaving inexperienced juniors to fill the gap
- **Uranium inventory rundown accelerating** with emergence of EFTs (Sprott etc)
- **Russia/Kazakhstan causing supply uncertainty**
- **Diversity, security of supply and achieving increased production are key issues to resolve**

# Nuclear Fuel Cycle Under Pressure

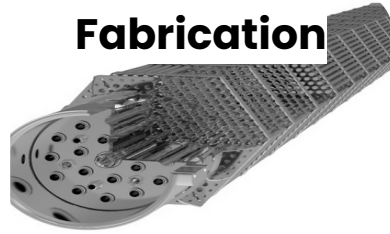
- SWU trading at a **10 year high** – US\$134/SWU

**~300% increase in past 5 years**

- Trading at an **all-time high** US\$40/kgU as UF<sub>6</sub>

**700% increase from 6 years**

**Fabrication**



**Enrichment**



**Reactor**



**Spent fuel storage or Reprocessing**

**Conversion**



**Yellowcake**



**Uranium Price**

- Trading at US\$56/lb

**60% increase in 2 years**

- **Increasing demand** for conversion and enrichment services causing **extraordinary price increases**
- Inevitable **pricing pressure will move to uranium price** as high demand works down through fuel cycle
- **Strain** on nuclear fuel cycle will **increase with greater demand and geopolitical consequences**



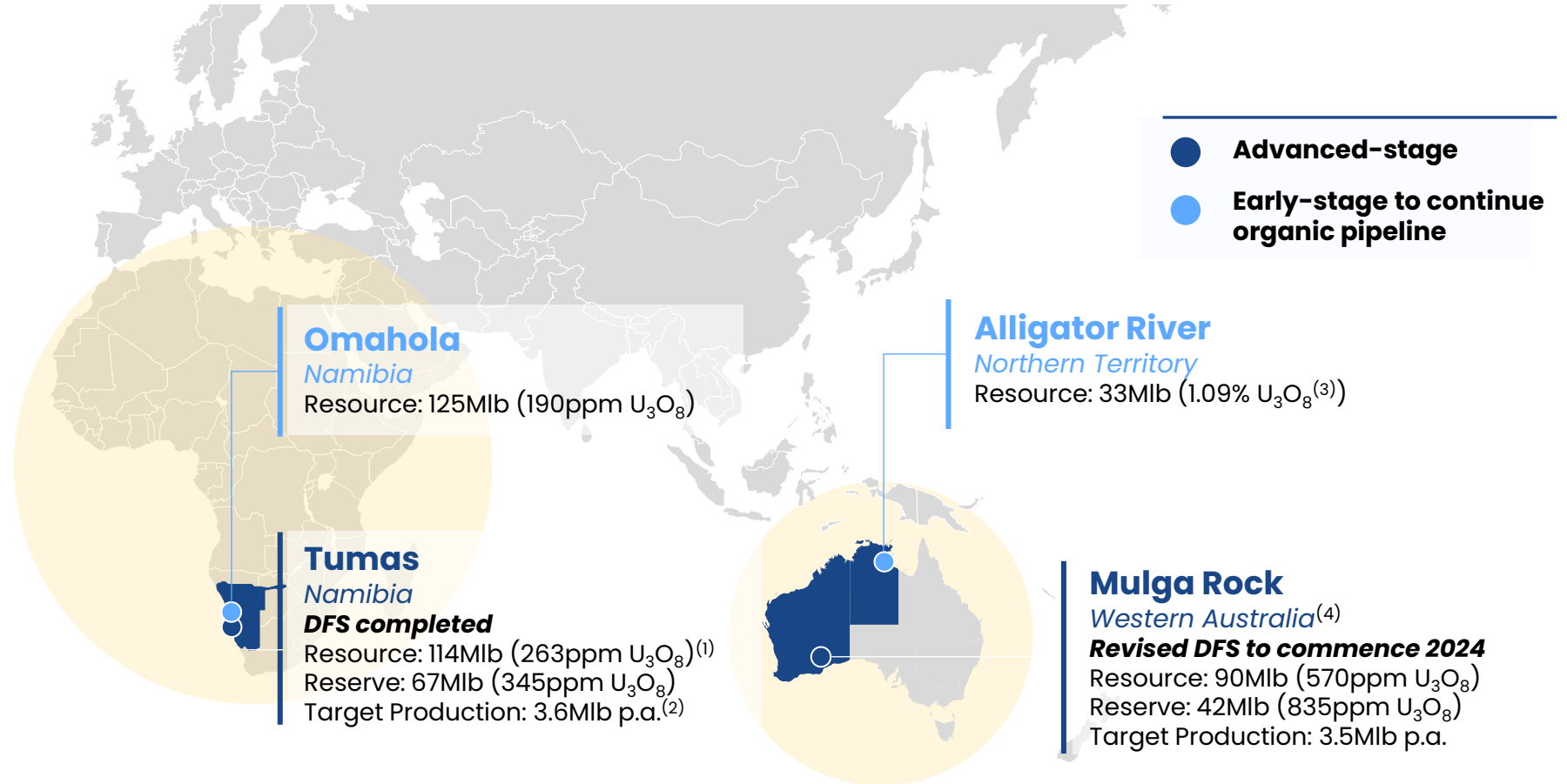
02

# Project Pipeline Positioned for Growth and Value



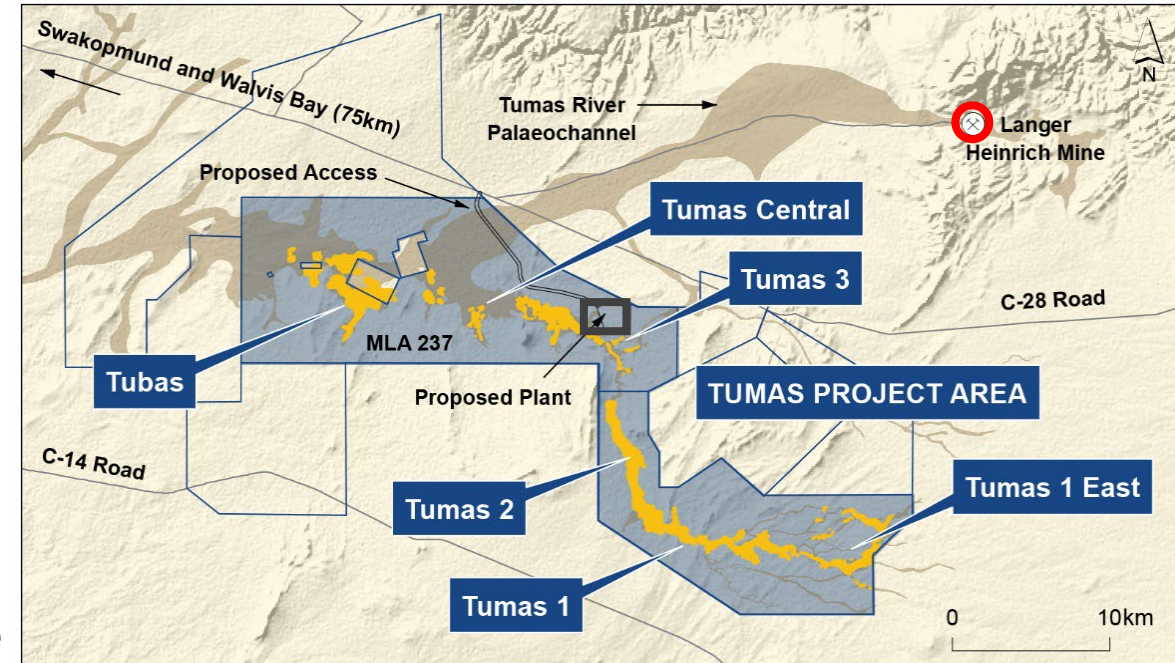
# Globally Diversified & Sizeable Portfolio with Two Flagship Projects

- Project portfolio provides diversity by asset, stage of development and geographic location
- Largest uranium resource base of any ASX-listed company **(396Mlb)**
- Uniquely positioned as one of the few uranium companies globally able to execute to development and production, with credible multi-mine asset exposure



# Tumas Project, Namibia – Overview

- Uranium and mining friendly jurisdiction
- Exploration since early 2017 increased the Mineral Resource fourfold
- Ore Reserves of 67.3Mlb increased by 120% in CY2021
  - 22.5-year LOM achieved
- DFS completed January 2023
- Further 10+ years to LOM
  - Inferred Resources of 30Mlb available to further expand Ore Reserve base,
  - 30% of the highly prospective Tumas channel remains to be tested to add to the resource base
- Project supported by
  - grid power
  - existing water supply
  - land (sealed road access, sea (Class 7 port) and air (international) transport infrastructure)



- Ex-Paladin Core Team now with Deep Yellow – established and operated Langer Heinrich
- Tumas operation essentially de-risked

# Project Analysis (US\$)

## Commentary

- ✓ **Head grade is 340ppm U<sub>3</sub>O<sub>8</sub> (av)**
- ✓ **Annual production (max) is 3.6Mlbpa**
- ✓ **Using vanadium price of US\$7.00/lb**

<b>Project Financials (Ungeared): Real</b>	<b>Unit</b>	<b>65/lb</b>	<b>77/lb<sup>1</sup></b>	<b>85/lb</b>
<b>Project operating life</b>	Years	22	22	22
<b>U<sub>3</sub>O<sub>8</sub> Produced</b>	Mlb	64	64	64
<b>Gross revenue: total</b>	\$M	4,272	5,166	5,548
<b>Operating margin (EBITDA)</b>	\$M	1,790	2,654	3,024
<b>Total initial capital (incl. \$51M pre-prod operating costs)</b>	\$M	(423)	(423)	(423)
<b>C1 cost (U<sub>3</sub>O<sub>8</sub> basis with V<sub>2</sub>O<sub>5</sub> by-product)</b>	\$/lb	34.68	34.68	34.68
<b>All-in Sustaining Cost (U<sub>3</sub>O<sub>8</sub> basis with V<sub>2</sub>O<sub>5</sub> by-product)</b>	\$/lb	38.72	39.18	39.38
<b>Project NPV (post tax)</b>	\$M	340	613	753
<b>Project IRR (post tax)</b>	%	19.2	26.5	31.4

## Tumas Project Timeline – Forward Looking

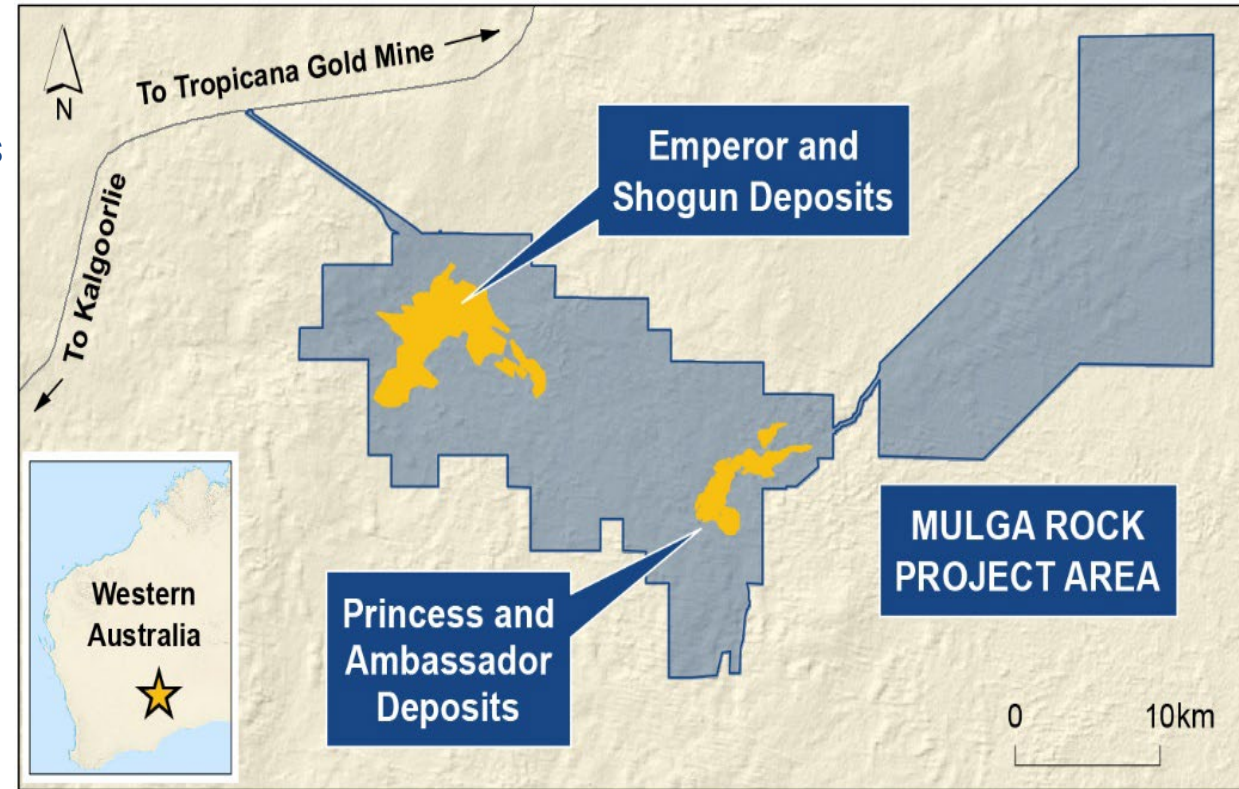


- **Detailed Engineering**
- **Off take Contracts**
- **Financing\***
- **Construction**
- **Production**

**\* uranium price dependent (above US\$65/lb)**

# Mulga Rock Project – 100%

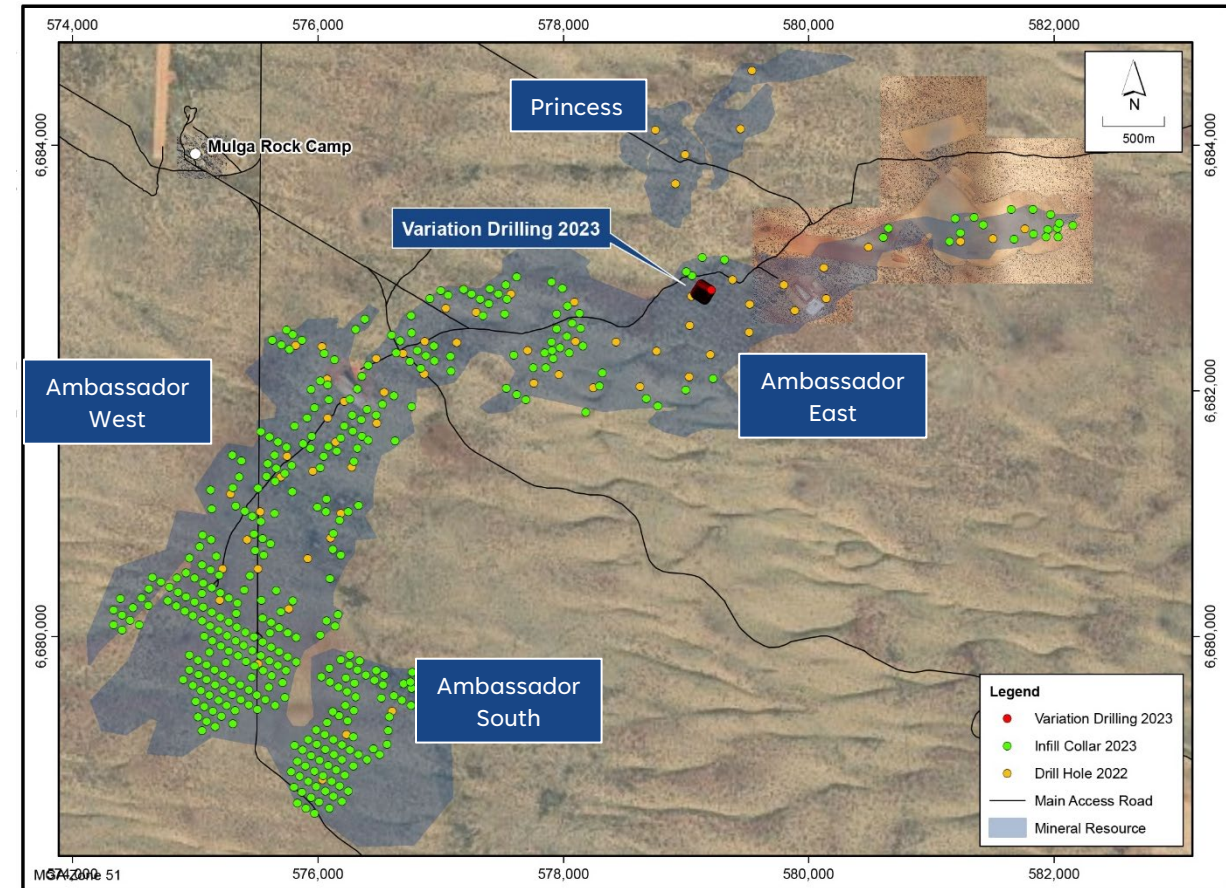
- Located in the Tier-1 mining jurisdiction of Western Australia
- Globally significant **Mineral Resource of 71.2Mt @ 570ppm for 90.1Mlb  $U_3O_8$** , positioning Mulga Rock as one of the largest undeveloped uranium projects in Australia
- **Only uranium project in WA to reach “Substantial Commencement” opening pathway to development**
- Currently conducting test work to quantify full in-ground value of **expanded uranium resource, critical minerals (Cu, Ni, Co, Zn) and rare earth elements (notably Nd/Tb/Dy/Pr)**
- **Ideal development timeline to capture upside in multiple commodities**





# Mulga Rock Project FY23 Activities

- Test work on 63 deep geo-metallurgical holes completed end CY2022, to drive revised process inputs in revised DFS
- Resource/reserve upgrade and ore variability drilling : (~600 holes /approx. 37,000m), commenced April 2023 – completion August CY2023
- Environmental monitoring and reporting ongoing to satisfy regulatory requirements
- Current test work and drilling expected to provide significant value uplift to Mulga Rock, within permitted footprint
- Revised DFS targeted for completion late CY2024/early CY2025

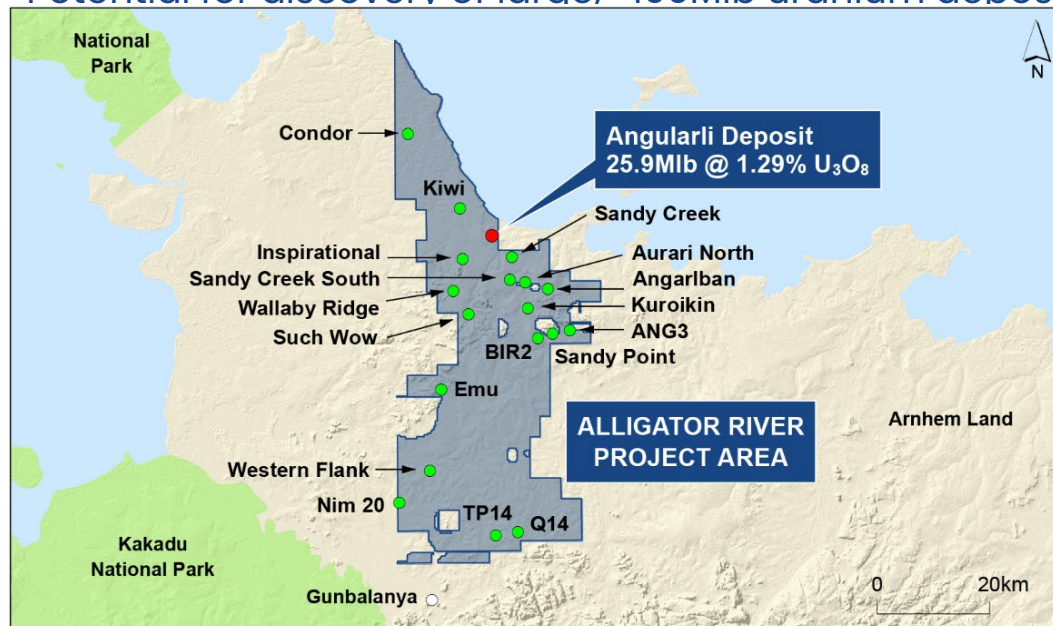


**OPPORTUNITY TO TURN MULGA ROCK INTO A POLY-METALLIC OPERATION WITH EXTENDED LIFE OF MINE BEYOND 20 YEARS WITH SIGNIFICANT INCREASE TO PROJECT VALUE**

# Exceptional Exploration Upside

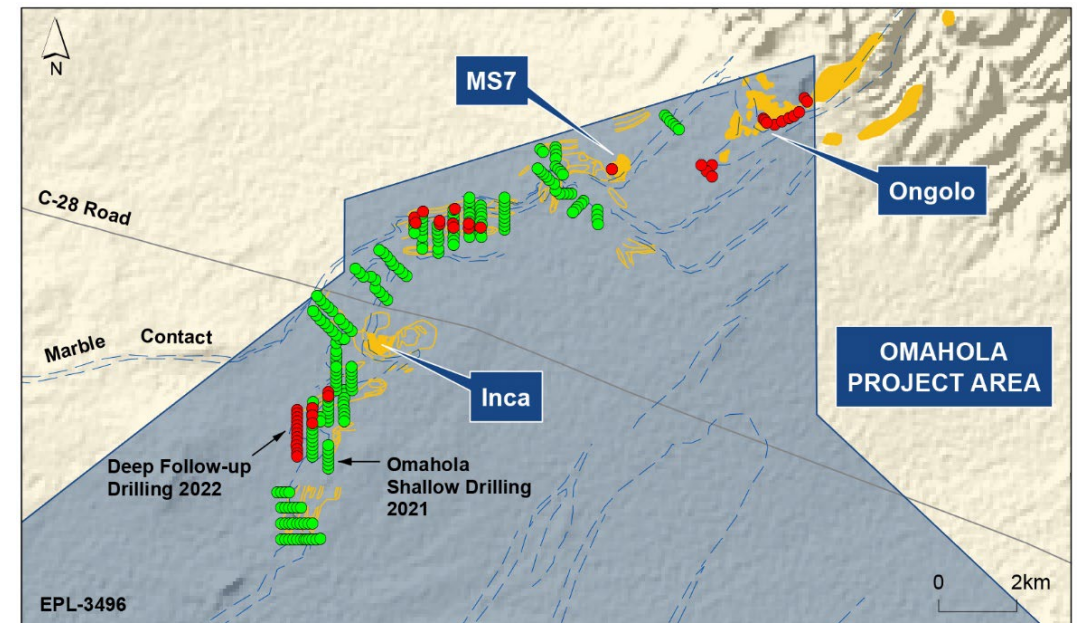
## ALLIGATOR RIVER PROJECT, NORTHERN TERRITORY – 100%

- Located in the world class uranium province of Alligator River, which hosts some of the highest-grade uranium deposits in the world
- High-grade, unconformity uranium deposits (Athabasca-style)
- Angularli Mineral Resource upgraded – 33Mlb @ 1.09%  $U_3O_8$
- Potential for discovery of large, >100Mlb uranium deposits



## OMAHOLA BASEMENT PROJECT, NAMIBIA – 100%

- Measured, Indicated and Inferred Resource base of 125Mlb at 190ppm  $U_3O_8$  across-Ongolo, MS7 and Inca deposits
- 50km prospective zone with strong potential for additional discoveries
- Shallow drilling program of ~200 holes for 7,100m already identified 3 highly-promising targets for follow up
- 50% of basement prospective zone remains to be tested



Refer to ASX Announcement dated 4 November 2021

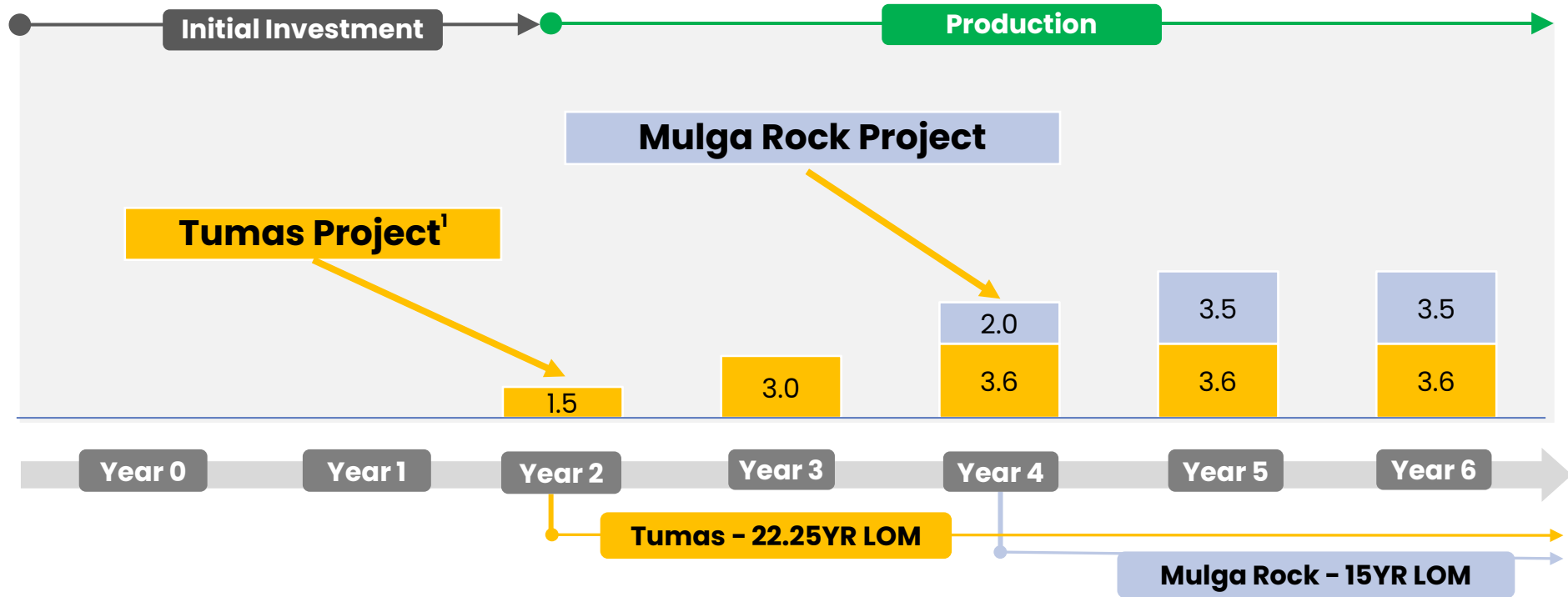




# 03

## Looking Ahead – a Differentiated Company

# Two Substantial, Advanced Uranium Projects to Produce +7Mlb



**Tumas** – DFS complete, aiming for production 2026



**Mulga Rock** – Revised DFS starting early 2024 to improve on project economics

*No other ASX listed company has 2 advanced projects with substantial production potential ready to capitalise on higher uranium prices*



# Opportunities Through Consolidation

- Nuclear demand expected to increase dramatically 2030-2060
- Outside the 2 majors (Cameco, Kazatomprom) the supply industry fragmented and largely dysfunctional
- Supply sector needs massive re-shaping to meet identified growth challenges
- Deep Yellow well-positioned to participate and take advantage with further consolidation where obvious accretive and transformational opportunity arises
- Opportunities for enhancement also through strategic alliances



*Need to Continue Seeking Growth Opportunities via Consolidation and Potential Strategic Alliances*

# Key Workstreams for next 12 Months

TUMAS PROJECT	MULGA ROCK	ALLIGATOR RIVER	M&A
<ul style="list-style-type: none"> <li>• <b>Q3 2023</b> – Further focused test work continuing to optimise Tumas Project</li> <li>• <b>O3 2023</b> – Grant of MLA 237</li> <li>• <b>Q4 2023</b> – Mineral Resource estimate upgrade</li> <li>• <b>H1 2024</b> – Project Finance finalised (uranium price dependent)</li> </ul>	<ul style="list-style-type: none"> <li>• <b>Q3 2023</b> – 600 air core drill program for variability testing and grade control test pattern completed</li> <li>• <b>Q4 2023</b> – Completion of test work for critical mineral and rare earth element analysis</li> <li>• <b>Q4 2023</b> – New resource upgrade incorporating uranium, critical minerals and rare earths with revised mining footprint within approval area</li> <li>• <b>2024</b> – Commencement of revised DFS, incorporating new inputs for uranium and non-uranium value uplift</li> </ul>	<ul style="list-style-type: none"> <li>• <b>H2 2023</b> – Desk top prospectivity appraisal to define regional exploration corridors for concurrent investigations</li> <li>• <b>Q2 2023</b> – New resource estimate for Angularli Deposit <u>delivered</u></li> </ul>	<ul style="list-style-type: none"> <li>• <b>Ongoing</b> – Continued focus on accretive consolidation to develop larger scale with high quality conventional mining assets</li> </ul>

# Best Pure Play Uranium Investment

---

**Deep Yellow is successfully establishing the right platform**

---

**Uranium market backdrop creates exceptional opportunities**

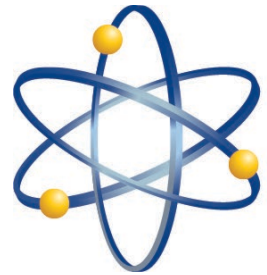
---

**Strong board, proven leadership, executive and technical team producing robust technical, financial and governance considerations to guide company growth**

---

**Deep Yellow is on a pathway to becoming a reliable and long-term uranium producer, able to provide production optionality, security of supply and geographic diversity**

---



**Deep Yellow**  
LIMITED

**For further information:**

T: +61 8 9286 6999

E: [info@deepyellow.com.au](mailto:info@deepyellow.com.au)

W: [www.deepyellow.com.au](http://www.deepyellow.com.au)

: [@deepyellowltd](https://twitter.com/deepyellowltd)

: [deep-yellow-limited](https://www.linkedin.com/company/deep-yellow-limited)

in

# Appendix Mineral Resources

## Notes:

Figures have been rounded and totals may reflect small rounding errors.

XRF chemical analysis unless annotated otherwise.

♦  $eU_3O_8$  - equivalent uranium grade as determined by downhole gamma logging.

# Combined XRF Fusion Chemical Assays and  $eU_3O_8$  values.

Where  $eU_3O_8$  values are reported it relates to values attained from radiometrically logging boreholes.

Gamma probes were calibrated at Pelindaba, South Africa in 2007. Recent calibrations were carried out at the Langer Heinrich Mine calibration facility in July 2018 and September 2019.

During drilling, probes are checked daily against standard source.

1 ASX Release 04 Nov 2021 'Omahola Basement Project Resource Upgrade to JORC 2012'

2 ASX Release 29 Jul 2021 'Drilling at Tumas 3 Delivers Significant Resource Upgrade'

3 ASX Release 02 Sep 2021 'Tumas Delivers Impressive Indicated Mineral Resource'

4 ASX Release 24 Mar 2014 'Tumas Sands Project - Resource Update'

5 ASX Release 28 Feb 2012 'TRS Project Resources Increased'

6 ASX Release 31 Mar 2023 'Aussinanis Project Resource Upgrade to JORC (2012)'

Deposit	Category	Cut-off (ppm U <sub>3</sub> O <sub>8</sub> )	Tonnes (M)	U <sub>3</sub> O <sub>8</sub> (ppm)	U <sub>3</sub> O <sub>8</sub> (t)	U <sub>3</sub> O <sub>8</sub> (Mlb)	Resource Categories (Mlb U <sub>3</sub> O <sub>8</sub> )		
							Measured	Indicated	Inferred
<b>BASEMENT MINERALISATION</b>									
<b>Omahola Project – JORC 2012<sup>1</sup></b>									
INCA Deposit ♦	Indicated	100	21.4	260	5,600	12.3	–	12.3	–
INCA Deposit ♦	Inferred	100	15.2	290	4,400	9.7	–	–	9.7
Ongolo Deposit #	Measured	100	47.7	187	8,900	19.7	19.7	–	–
Ongolo Deposit #	Indicated	100	85.4	168	14,300	31.7	–	31.7	–
Ongolo Deposit #	Inferred	100	94.0	175	16,400	36.3	–	–	36.3
MS7 Deposit #	Measured	100	18.6	220	4,100	9.1	9.1	–	–
MS7 Deposit #	Indicated	100	7.2	184	1,300	2.9	–	2.9	–
MS7 Deposit #	Inferred	100	8.7	190	1,600	3.7	–	–	3.7
<b>Omahola Project Sub–Total</b>			<b>298.2</b>	<b>190</b>	<b>56,600</b>	<b>125.4</b>	<b>28.8</b>	<b>46.9</b>	<b>49.7</b>
<b>CALCRETE MINERALISATION Tumas 3 Deposit – JORC 2012<sup>2</sup></b>									
Tumas 3 Deposits ♦	Indicated	100	78.0	320	24,900	54.9	–	54.9	–
	Inferred	100	10.4	219	2,265	5.0		–	5.0
<b>Tumas 3 Deposits Total</b>			<b>88.4</b>	<b>307</b>	<b>27,165</b>	<b>59.9</b>			
<b>Tumas 1, 1E &amp; 2 Project – JORC 2012<sup>3</sup></b>									
Tumas 1 & 2 Deposit ♦	Indicated	100	90.4	220	19,860	43.8	–	43.8	–
Tumas 1 & 2 Deposit ♦	Inferred	100	21.8	206	4,692	10.3	–	–	10.3
<b>Tumas 1, 1E &amp; 2 Deposits Total</b>			<b>112.2</b>	<b>219</b>	<b>24,552</b>	<b>54.1</b>			
<b>Sub–Total of Tumas 1, 2 and 3</b>			<b>200.6</b>	<b>258</b>	<b>51,717</b>	<b>114.0</b>			
<b>Tubas Red Sand Project – JORC 2012<sup>4</sup></b>									
Tubas Sand Deposit #	Indicated	100	10.0	187	1,900	4.1	–	4.1	–
Tubas Sand Deposit #	Inferred	100	24.0	163	3,900	8.6	–	–	8.6
<b>Tubas Red Sand Project Total</b>			<b>34.0</b>	<b>171</b>	<b>5,800</b>	<b>12.7</b>			
<b>Tubas Calcrete Resource – JORC 2004<sup>5</sup></b>									
Tubas Calcrete Deposit	Inferred	100	7.4	374	2,767	6.1	–	–	6.1
<b>Tubas Calcrete Total</b>			<b>7.4</b>	<b>374</b>	<b>2,767</b>	<b>6.1</b>			
<b>Aussinanis Project – JORC 2004– DYL 85%<sup>6</sup></b>									
Aussinanis Deposit ♦	Indicated	100	12.3	168	2,000	4.5	–	4.5	–
Aussinanis Deposit ♦	Inferred	100	62.1	172	10,700	23.6	–	–	23.6
<b>Aussinanis Project Total</b>			<b>74.4</b>	<b>171</b>	<b>12,700</b>	<b>28.1</b>			
<b>Calcrete Projects Sub–Total</b>							<b>–</b>	<b>107.3</b>	<b>53.6</b>
<b>GRAND TOTAL NAMIBIAN RESOURCES</b>			<b>614.6</b>	<b>211</b>	<b>129,584</b>	<b>286.3</b>	<b>28.8</b>	<b>154.2</b>	<b>103.3</b>



# Appendix Mineral Resources

## Notes:

Figures may not add due to rounding.

Using combined chemical and radiometric grades.

1 ASX Release 3 July 2023 'Robust Resource Upgrade Delivered at Angularli'

2 ASX Release 12 Jul 2017 'Significant Resource Update – Mulga Rock Cracks 90Mlbs'

Deposit	Category	Cut-off	Tonnes	U <sub>3</sub> O <sub>8</sub>	U <sub>3</sub> O <sub>8</sub>	U <sub>3</sub> O <sub>8</sub>	Resource Categories (Mlb U <sub>3</sub> O <sub>8</sub> )		
		(ppm U <sub>3</sub> O <sub>8</sub> )	(M)	(ppm)	(t)	(Mlb)	Measured	Indicated	Inferred
<b><u>Northern Territory</u></b>									
<b>Angularli Project - JORC 2012 <sup>1</sup></b>									
Angularli	Indicated	1,500	1.37	10,900	14,917	32.9	-	-	32.9
<b>Angularli Project Sub-Total</b>			<b>1.37</b>	<b>10,900</b>	<b>14,917</b>	<b>32.9</b>	<b>-</b>	<b>-</b>	<b>32.9</b>
<b><u>Western Australia</u></b>									
<b>Mulga Rock Project – JORC 2012 <sup>2</sup></b>									
Ambassador	Measured	150	5.2	1,100	5,720	12.6	12.6	-	-
Ambassador	Indicated	150	14.8	800	11,840	26.0	-	26.0	-
Ambassador	Inferred	150	14.2	420	5,964	13.1	-	-	13.1
Princess	Indicated	150	2.0	820	1,640	3.6	-	3.6	-
Princess	Inferred	150	1.3	420	546	1.2	-	-	1.2
<b>Mulga Rock East Total</b>			<b>37.5</b>	<b>680</b>	<b>25,710</b>	<b>56.5</b>			
Shogun	Indicated	150	2.2	680	1,496	3.2	-	3.2	-
Shogun	Inferred	150	0.9	290	261	0.6	-	-	0.6
Emperor	Inferred	150	30.8	440	13,522	29.8	-	-	29.8
<b>Mulga Rock West Total</b>			<b>33.9</b>	<b>680</b>	<b>15,279</b>	<b>33.6</b>			
<b>Mulga Rock Project Sub-Total</b>			<b>71.4</b>	<b>570</b>	<b>40,989</b>	<b>90.1</b>	<b>12.6</b>	<b>32.8</b>	<b>44.7</b>
<b>GRAND TOTAL AUSTRALIAN RESOURCES</b>			<b>72.8</b>	<b>730</b>	<b>55,906</b>	<b>123.0</b>	<b>12.6</b>	<b>32.8</b>	<b>77.6</b>
<b>GRAND TOTAL RESOURCES</b>			<b>687.4</b>	<b>275</b>	<b>185,490</b>	<b>409.3</b>	<b>41.4</b>	<b>187.0</b>	<b>180.9</b>