

Deep Yellow
Limited



Australian Uranium Conference

19 July 2012

Greg Cochran – Managing Director

ASX: DYL

www.deepyellow.com.au

Disclaimer



This document has been prepared by Deep Yellow Limited (Deep Yellow, DYL or the Company) in connection with providing an overview to interested analysts and investors.

This presentation is being provided for the sole purpose of providing information to enable recipients to review the business activities of Deep Yellow. This presentation is thus by its nature limited in scope and is not intended to provide all available information regarding Deep Yellow. This presentation is not intended as an offer, invitation, solicitation, or recommendation with respect to the purchase or sale of any securities. This presentation should not be relied upon as a representation of any matter that a potential investor should consider in evaluating Deep Yellow.

Deep Yellow and its affiliates, subsidiaries, directors, agents, officers, advisers or employees do not make any representation or warranty, express or implied, as to or endorsement of, the accuracy or completeness of any information, statements, representations or forecasts contained in this presentation, and they do not accept any liability or responsibility for any statement made in, or omitted from, this presentation. Deep Yellow accepts no obligation to correct or update anything in this presentation.

No responsibility or liability is accepted and any and all responsibility and liability is expressly disclaimed by Deep Yellow and its affiliates, subsidiaries, directors, agents, officers, advisers or employees for any errors, misstatements, misrepresentations in or omissions from this presentation.

Any statements, estimates, forecasts or projections with respect to the future performance of Deep Yellow and/or its subsidiaries contained in this presentation are based on subjective assumptions made by Deep Yellow's management and about circumstances and events that have not yet taken place. Such statements, estimates, forecasts and projections involve significant elements of subjective judgement and analysis which, whilst reasonably formulated, cannot be guaranteed to occur. Accordingly, no representations are made by Deep Yellow or its affiliates, subsidiaries, directors, officers, agents, advisers or employees as to the accuracy of such information; such statements, estimates, forecasts and projections should not be relied upon as indicative of future value or as a guaranteed of value or future results; and there can be no assurance that the projected results will be achieved.







Prospective investors should make their own independent evaluation of an investment in Deep Yellow.

Nothing in this presentation should be construed as financial product advice, whether personal or general, for the purposes of section 766B of the Corporations Act 2001 (Cth). This presentation consists purely of factual information and does not involve or imply a recommendation or a statement of opinion in respect of whether to buy, sell or hold a financial product. This presentation does not take into account the objectives, financial situation or needs of any person, and independent personal advice should be obtained.

This presentation and its contents have been made available in confidence and may not be reproduced, or disclosed to third parties or made public in any way without the express written permission of Deep Yellow.

Presentation Overview



-  Corporate Profile
-  Namibian Overview
-  Deep Yellow Namibian Portfolio
-  Omahola Project
-  Tubas Sand Project
-  Conclusion

Corporate Profile



The Board

Mervyn Greene – Chairman

Greg Cochran – Managing Director

Martin Kavanagh – Executive Director

Gillian Swaby – N.E.D

Rudolf Brunovs – N.E.D (independent)

Mark Pitts – Company Secretary

Executives & Management

Greg Cochran – Managing Director

Martin Kavanagh – Executive Director

Leon Pretorius – MD: Namibia

Ursula Pretorius – Financial Controller

Klaus Frielingsdorf – GM: Technical

Mark Pitts – Company Secretary

Capital Structure – as at 29 June 2012

Shares on Issue 1,379.567 M

Unlisted Options/Perf. Rights 12.68 M

Market Cap (@ 4.7c) ~ 65 M

Net Cash ~1.5 M

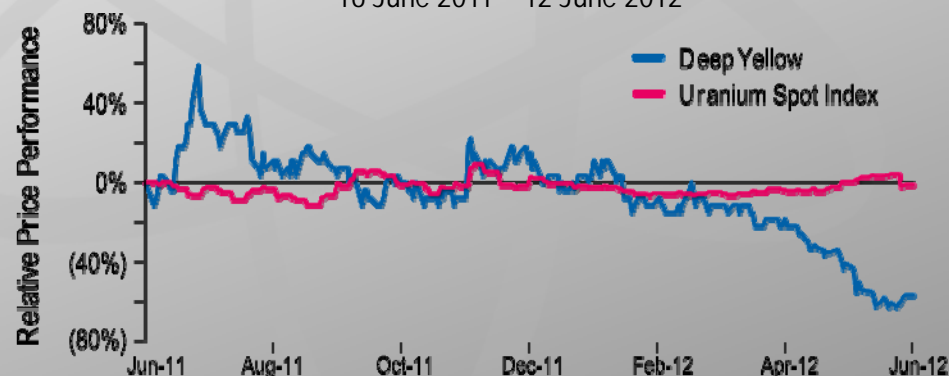
Major shareholders:

Paladin Energy 19.9%

Board & Management 15.7%

DYL Share Price vs. Uranium Spot

16 June 2011 – 12 June 2012



Namibian Uranium Mines and Projects



Trekkopje – Areva
 (100 ppm cut-off)
 335 Mt @ 149 ppm: 110 Mlbs

Valenica – Forsys Metals
 (67 ppm cut-off)
 176 Mt @ 156 ppm: 61 Mlbs

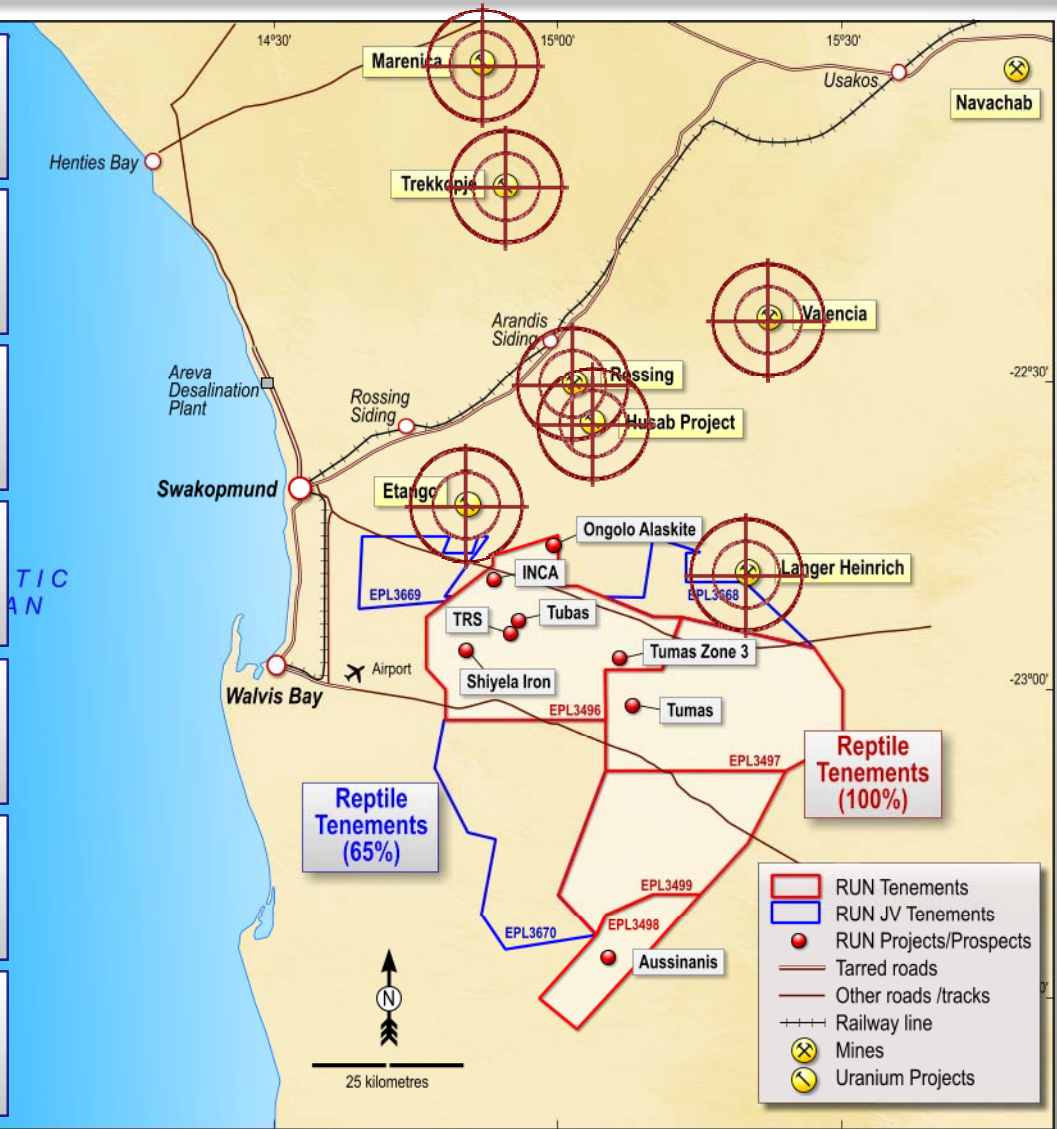
Marenica – Marenica Energy Limited
 (100 ppm cut-off)
 196 Mt @ 169 ppm: 73 Mlbs

Etango – Bannerman Resources Limited
 (100 ppm cut-off)
 336 Mt @ 201 ppm: 149 Mlbs

Rossing – Rossing Uranium Limited
 (100 ppm cut-off)
 246 Mt @ 252 ppm: 137 Mlbs

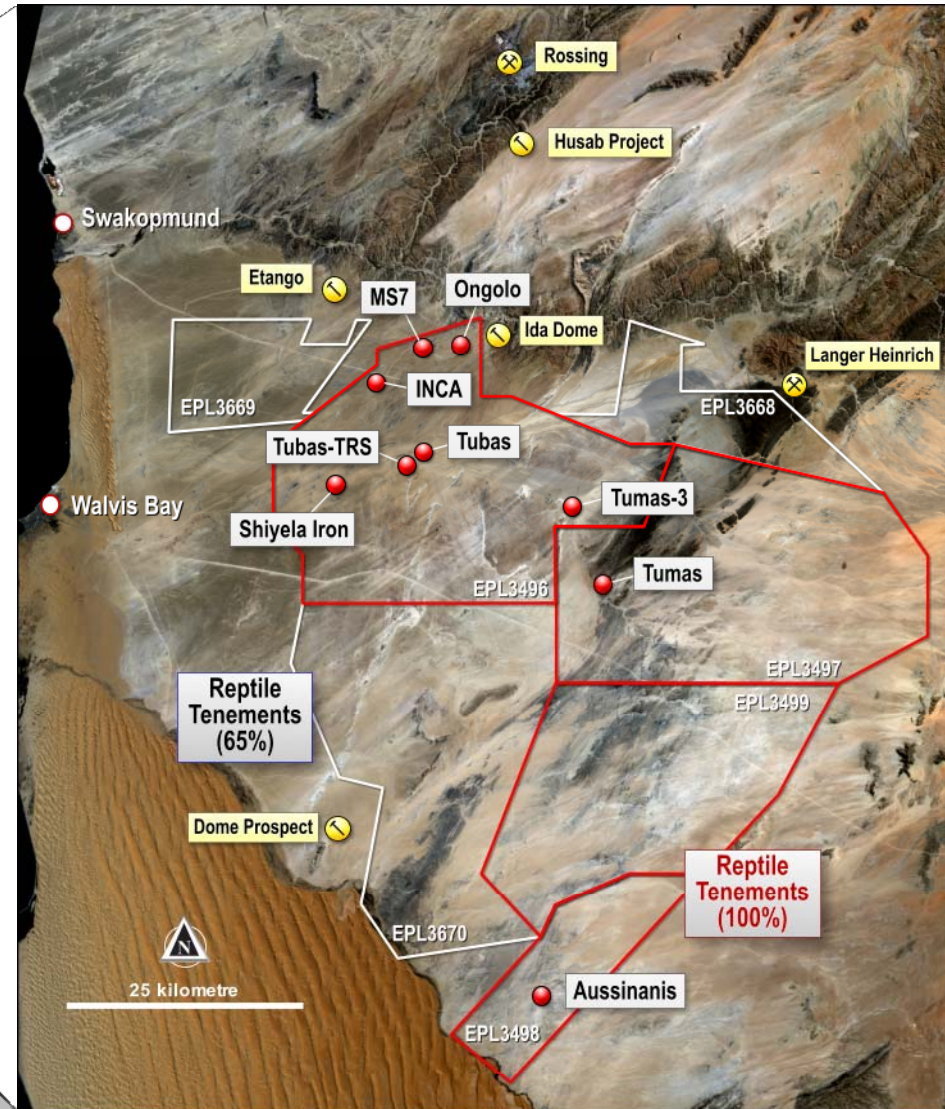
Husab – Extract Resources Limited
 (100 ppm cut-off)
 241 Mt @ 480 ppm: 257 Mlbs

Langer Heinrich – Paladin Energy Limited
 (250 ppm cut-off)
 110 Mt @ 550 ppm: 134 Mlbs



Grade counts, not just size...

DYL's Namibian Portfolio



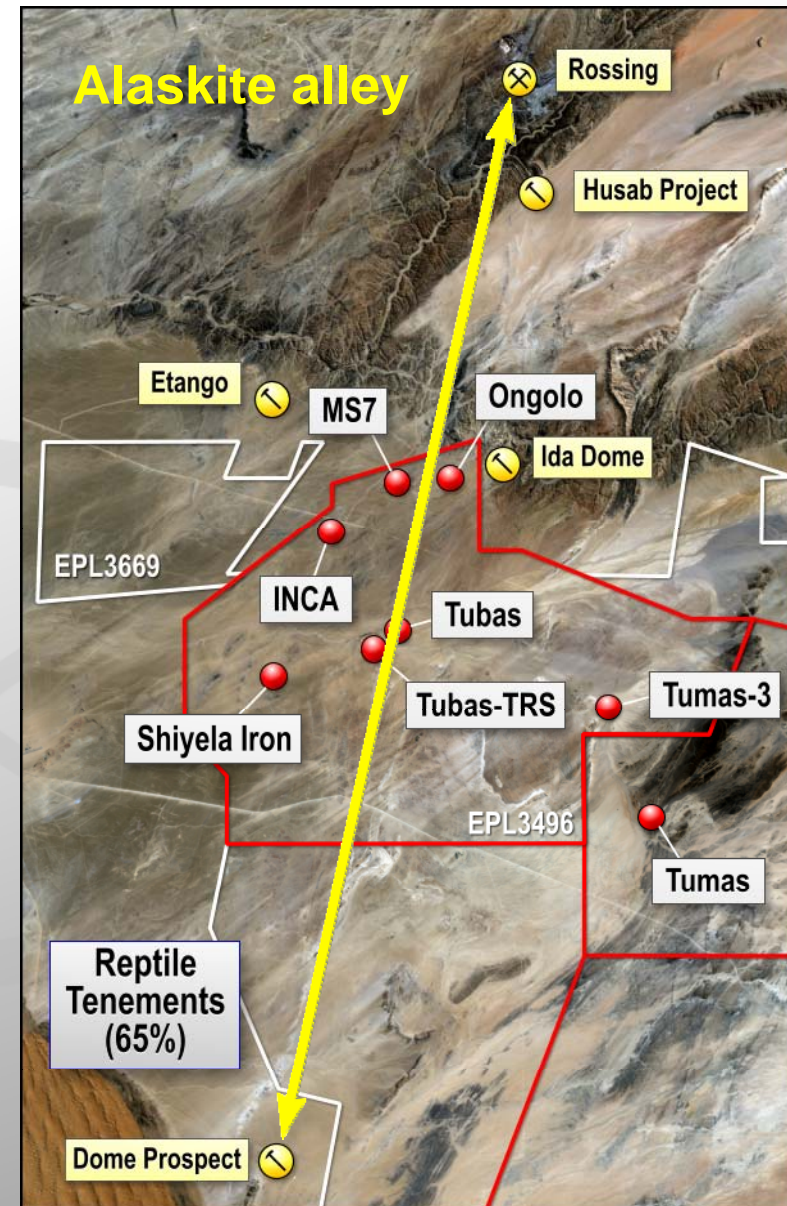
4,195 km²
exploration area:
101.4 Mlbs in
resources

Note: Exploration in Namibia is conducted by DYL's wholly-owned subsidiary Reptile Uranium Namibia (RUN)

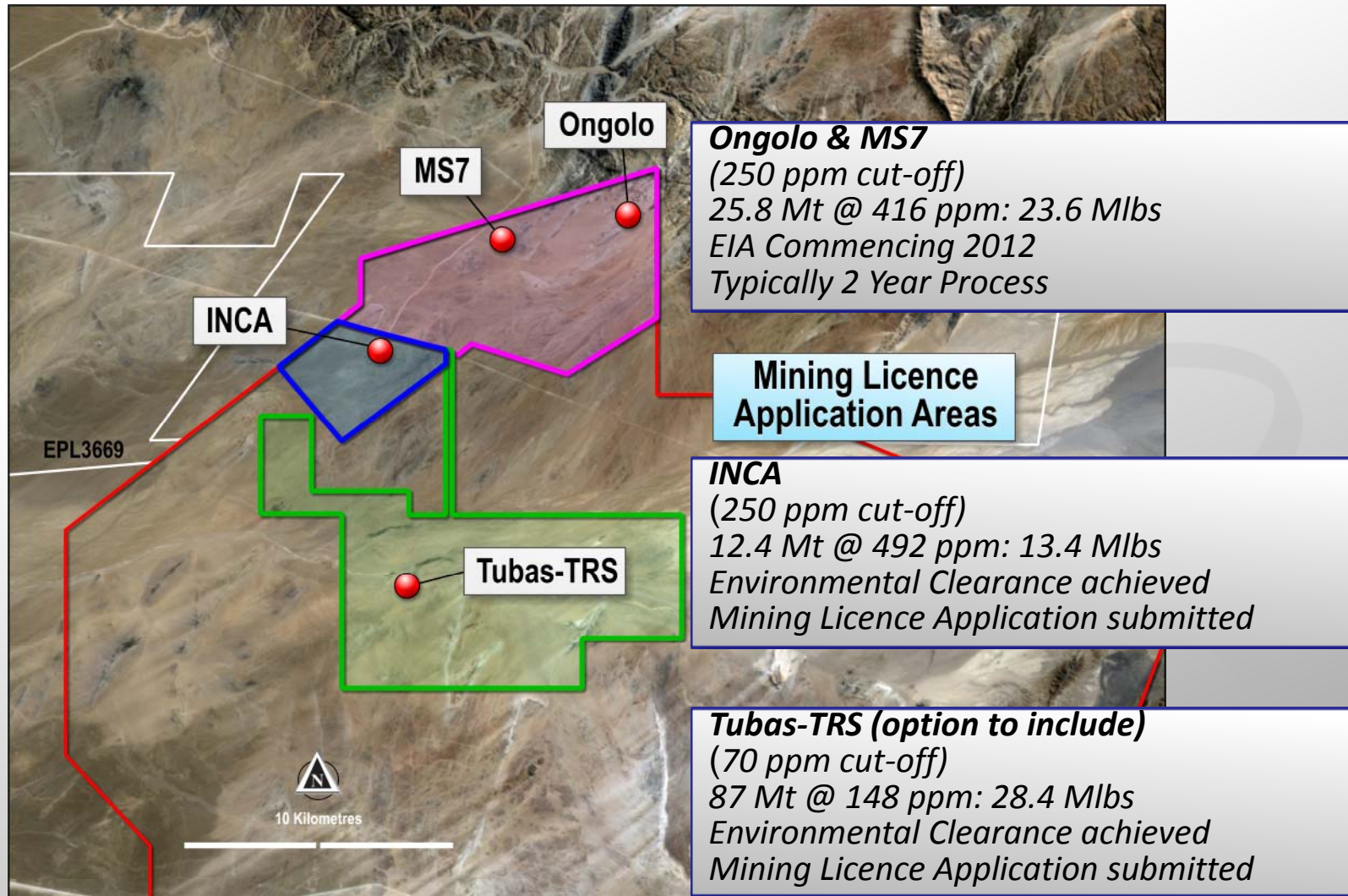
Omahola: Flagship Project



- ❖ Located in Namibia's "Alaskite Alley"
- ❖ Trend includes Rossing Uranium Mine (Rio Tinto) and the Husab Project (Formerly Extract Resources)
- ❖ Three Deposits to feed one plant:
 - **Ongolo** – high grade alaskite hosted uranium mineralisation
 - **MS7**– Ongolo satellite, high grade alaskite hosted uranium mineralisation
 - **INCA** – unique high grade uranium, magnetite and pyrite mineralisation
- ❖ Objective: Achieve predominantly alaskite Resource of 50 Mlbs U₃O₈ for "critical mass"



Omahola Project: Resource Base



Omahola JORC Resource: 38.2 Mt at 441 ppm for 37 Mlbs U₃O₈

Omahola Project: Status



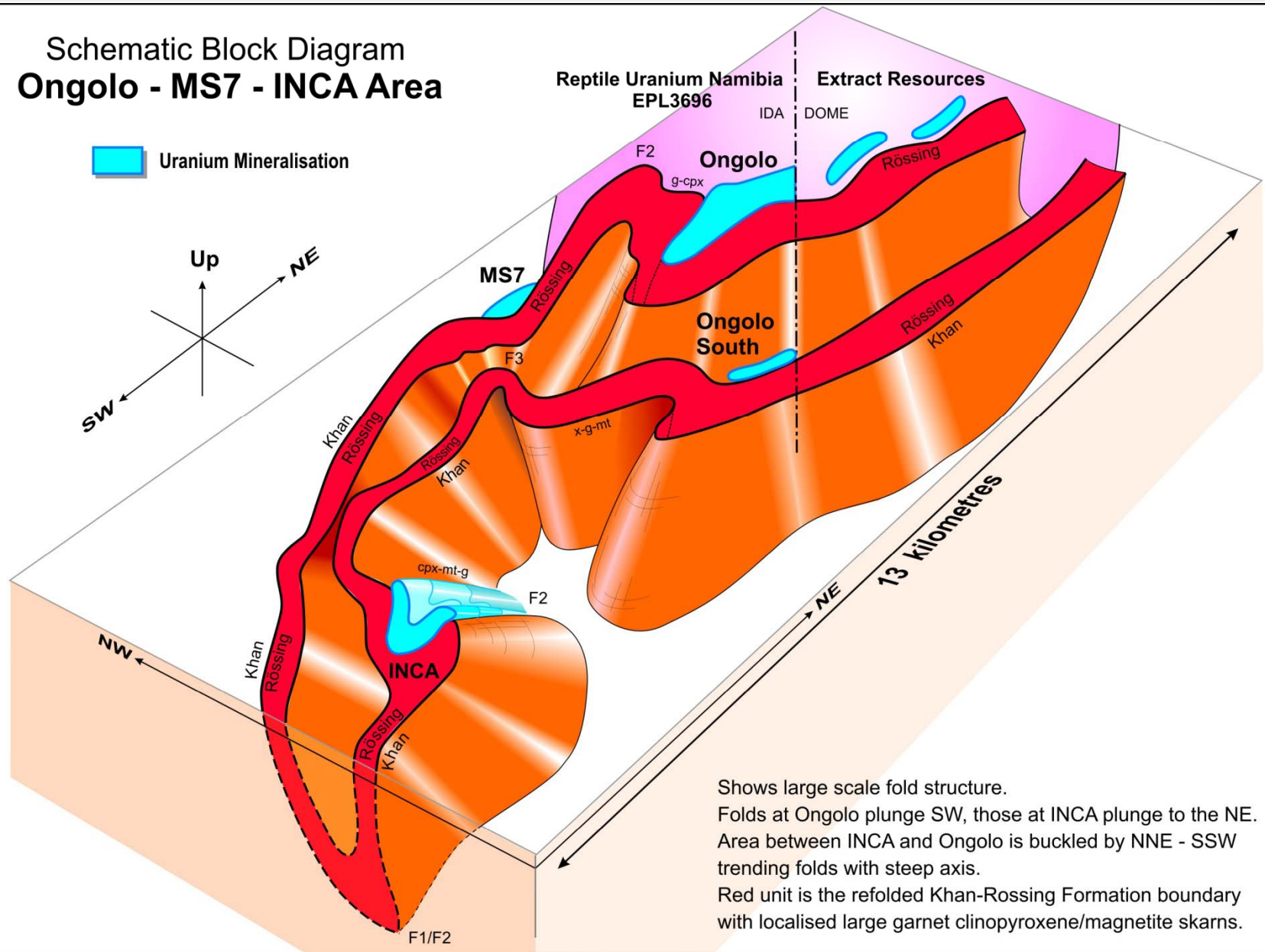
- ❖ Interim PFS results on INCA/TRS Deposits (SNC-Lavalin – Jan 2011)
 - 2.2 Mlbs pa design capacity, assumed 12 year mine life
 - Open pit mining, conventional acid leach processing plant
 - Capex: ~US\$330m and Opex: ~US\$30/lb
- ❖ Objective: finalise Pre-Feasibility Study in 2013
- ❖ Drill programme designed to achieve critical mass by:
 - Increasing size and confidence of Ongolo and MS7;
 - Systematically drilling the Ongolo-MS7 trend to identify additional high-grade satellite deposits;
 - Recent Ongolo South discovery reinforces ongoing success
- ❖ Next steps for Ongolo and MS7 – scheduled H2 2012:
 - Drilling results feeding into resource upgrades
 - Pit Optimisation and mining cost studies
 - Metallurgical testwork

Omahola Project: Regional Understanding



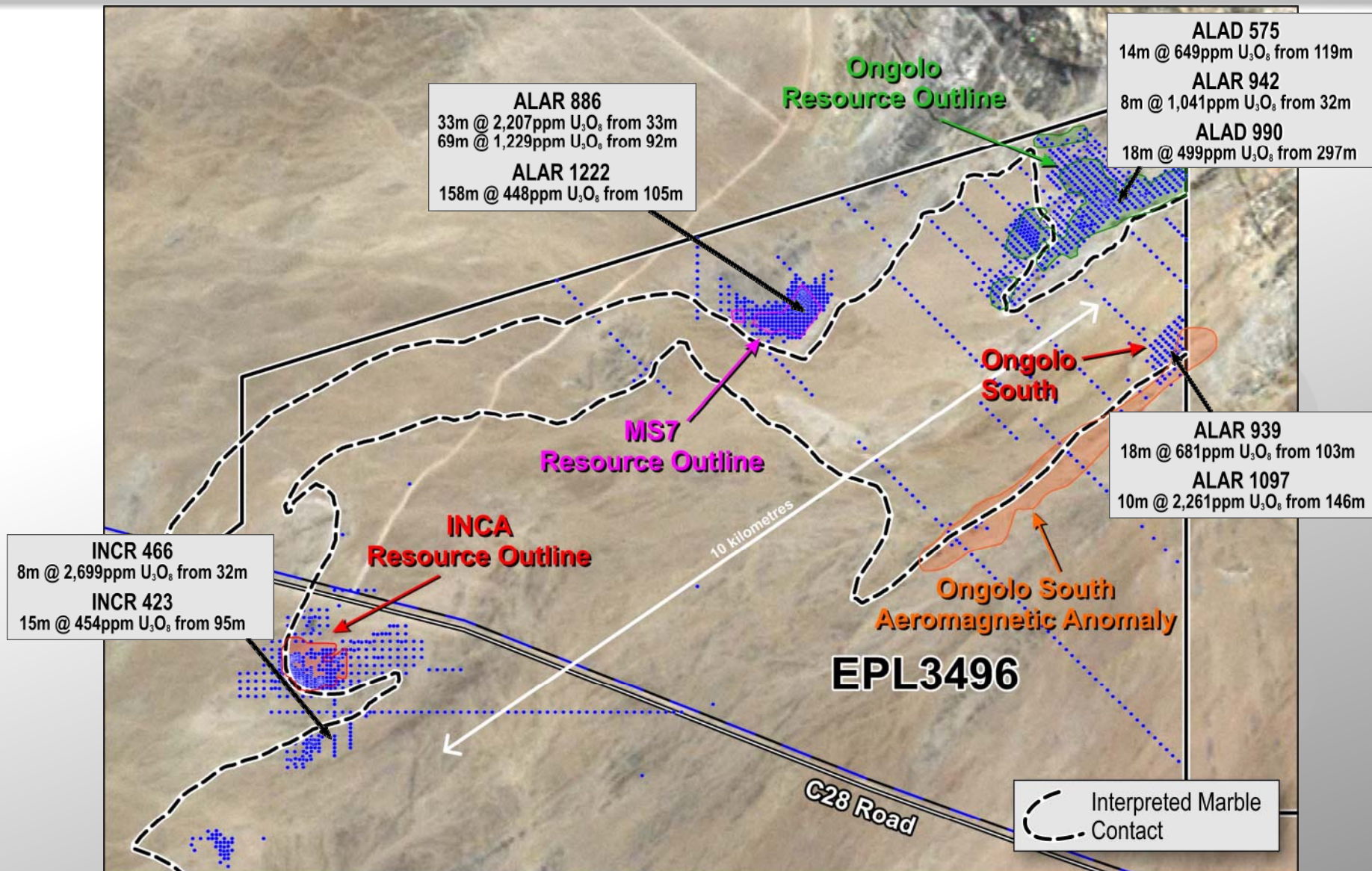
Schematic Block Diagram Ongolo - MS7 - INCA Area

 Uranium Mineralisation



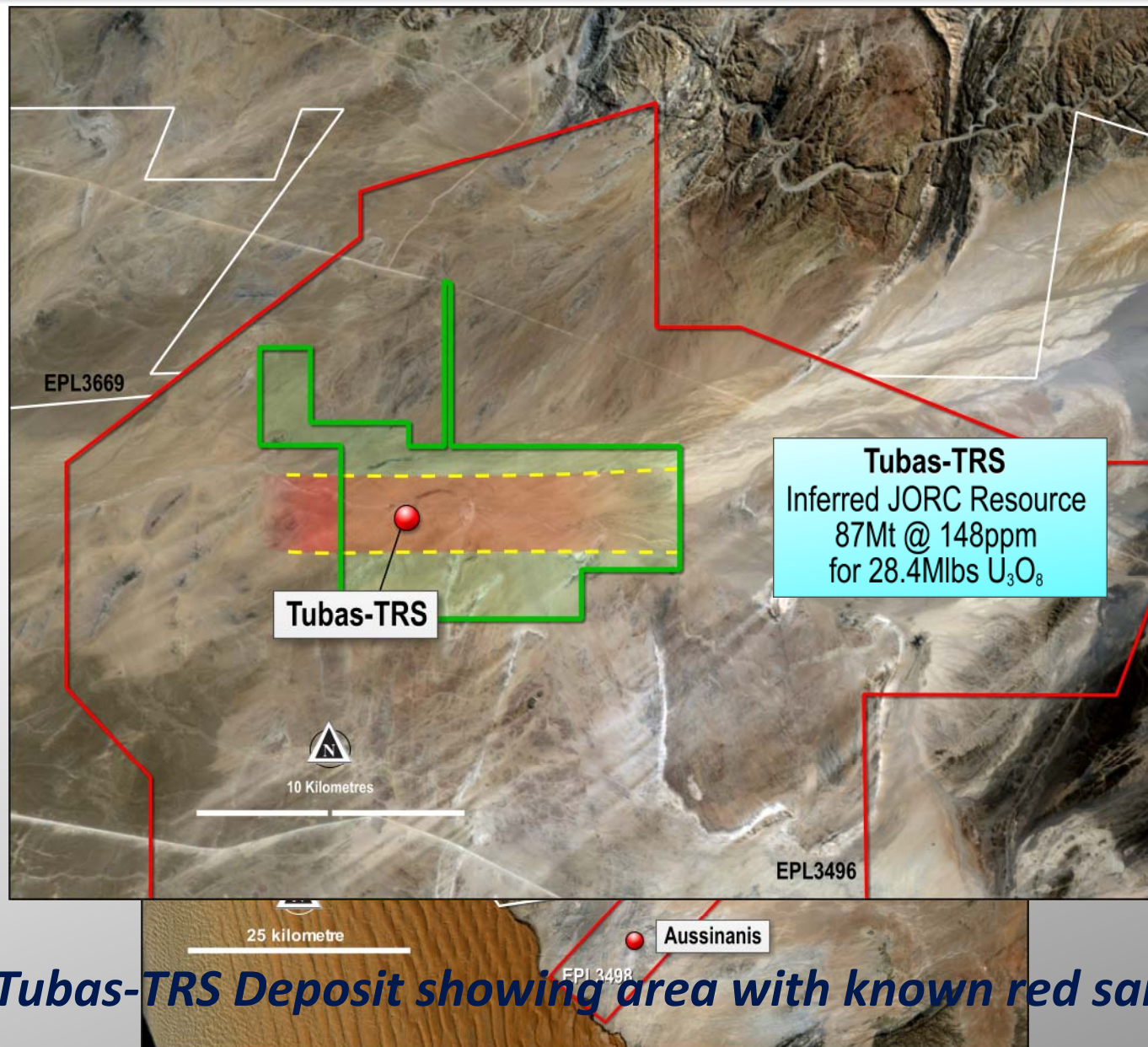
Shows large scale fold structure.
Folds at Ongolo plunge SW, those at INCA plunge to the NE.
Area between INCA and Ongolo is buckled by NNE - SSW trending folds with steep axis.
Red unit is the refolded Khan-Rössing Formation boundary with localised large garnet clinopyroxene/magnetite skarns.

Omahola Project: Exploration Success...



...the resource base continues to grow...

Tubas Sand Project: Location



Tubas-TRS Deposit showing area with known red sand

Tubas Sand Project: Overview



Deposit Characteristics:

- ✱ Well-sorted windblown sand, low grade uranium
- ✱ Free flowing/weakly consolidated
- ✱ Large area along the Tubas palaeochannel
- ✱ Bulk of uranium in sub 20 μ fraction
- ✱ Uranium mineral almost exclusively carnotite
- ✱ At ~150 ppm, generally considered uneconomic

Objective:

Concentrate maximum uranium in minimum volume through physical beneficiation to enhance economics

Tubas Sand Project: Schauenburg

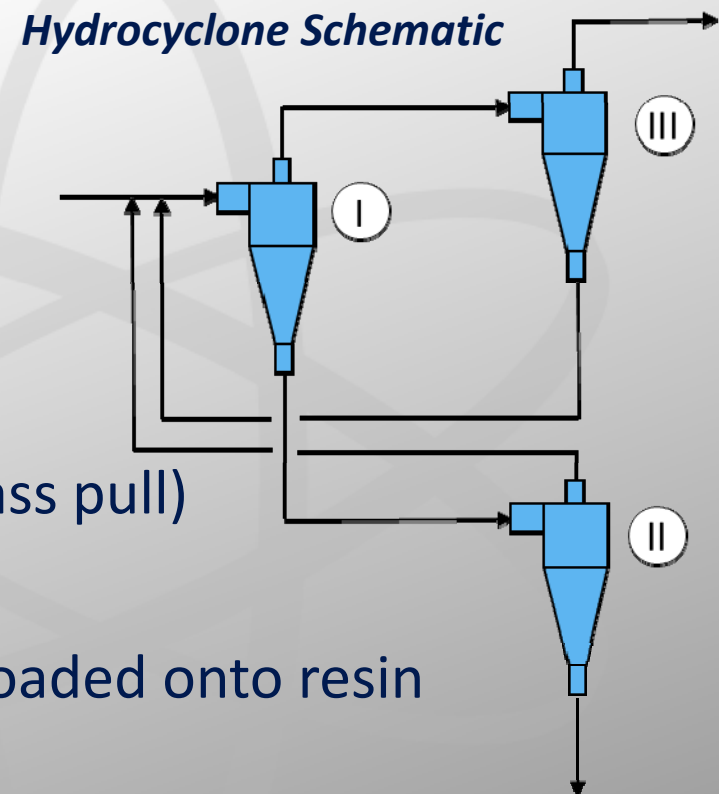


Process:

Hydrosort[®] - II → Scrubbing → Hydrosort[®] - I → 3 X Hydrocyclones

Successful Pilot Plant Test:

- ❁ Simple process
- ❁ Uranium Recovery >80%
- ❁ Carbonate reduction >80%
- ❁ Mass pull between 10% ~ 20%
- ❁ Uranium upgrade factor 7.9 (at 10% mass pull)
- ❁ Process guarantee offered
- ❁ Product is easily leached (pH 2.5) and loaded onto resin
- ❁ Environmental clearance in place



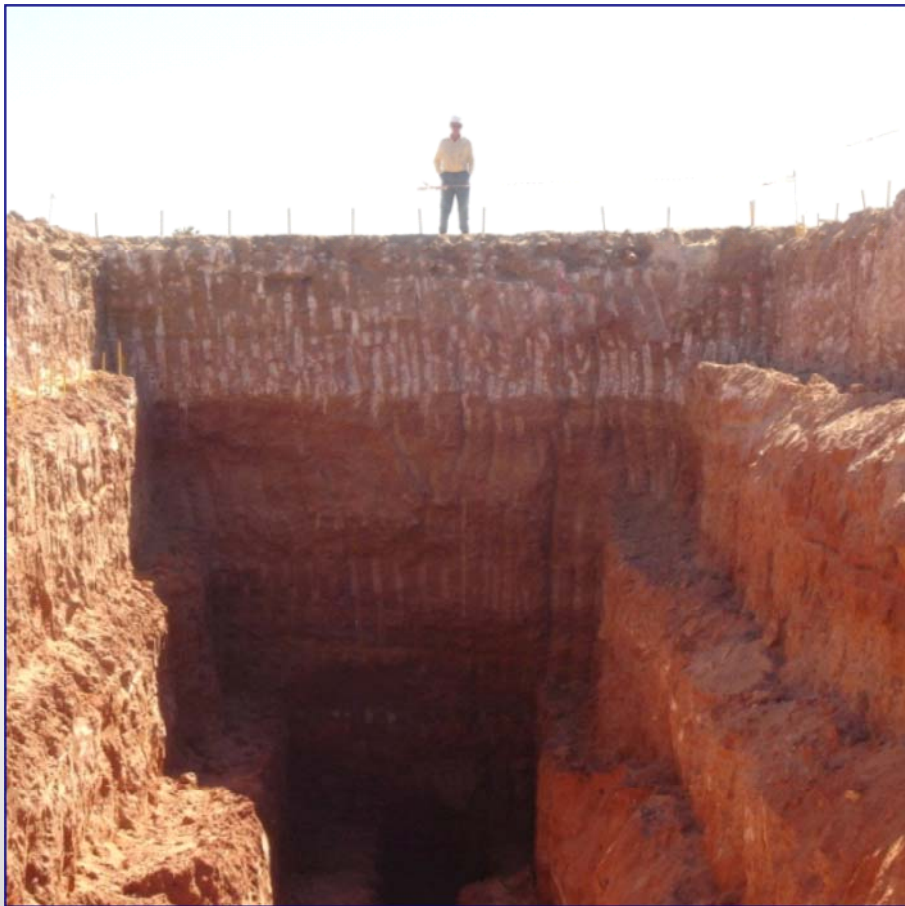
Tubas Sand Project: Potential



- ✿ Develop sand mining operation with Schauenburg Plant
- ✿ Construct Resin-In-Leach Circuit on the INCA MLA
- ✿ Produce loaded resin for sale to existing producers
- ✿ Small columns transportable by truck
- ✿ Schauenburg plants are modular, ~ 250 tpa U_3O_8 per module
- ✿ Allows gradual up scaling
- ✿ Indicative Capital Cost from Scoping:
 - ~ U\$35 M for one module

Offtake arrangement with an existing producer reduces technical risk and time to commence production

Tubas Sand Project: Bulk Sample



Trench for Bulk Sample



Spoil Pile

Tubas Sand Project: Separation Testwork



Pilot Plant



Mineral Liberation

Tubas Sand Project: Leach Testwork



Successfully Loaded IX Resin @ pH 2.5

Corporate: Raptor earn-out terminated



- ✿ Deep Yellow acquired its Namibian interests in October 2006 from Raptor Minerals Limited in a deal which included an earn-out entitlement
- ✿ Earn-out – 1.5% of Inground value of any project developed on EPLs, settled at decision to mine
- ✿ Heads of Agreement has been executed with Raptor to terminate earn-out
- ✿ \$15 million settlement, terms:
 - Issue of 129,333,333 DYL shares valued at 11.52 cents/share and \$100,000 in cash
 - Stepped escrow over three years
 - Shareholder approval required at Annual General Meeting

INDICATIVE CAPITAL STRUCTURE AFTER RAPTOR ISSUE:	
Shares on Issue	1,380 M
Shares on Issue post Raptor transaction	1,509 M
Unlisted Options/Perf. Rights	13.8 M
Market Cap (assuming @ 4.7c as of 29/6/12)	~ A\$71 M

Summary – clearly defined strategy



- ❁ Two advanced stage uranium projects in one of the world's most prominent uranium mining districts in Namibia
 - Omahola is only independent high grade Namibian uranium project
 - Omahola resource base growing steadily
 - Planned nameplate capacity of at least 2.2Mlbs U₃O₈ pa
 - Supplemental production potential from Tubas Sand Project up to 1 Mlbs U₃O₈ pa
- ❁ Divestment or joint ventures on non-core uranium projects
 - Australia, Nova Energy EPLs, Aussinanis
- ❁ Shiyela Iron Project divestment will allow:
 - Accelerated project development
 - Possibly provide a source of non-dilutionary funding
- ❁ Experienced management team
- ❁ Strong medium-long term uranium market fundamentals

***Leading location, High grade, Growing scale,
Proven delivery record***

Contact Details



Greg Cochran
Managing Director

Deep Yellow Limited
Level 1, 329 Hay Street
Subiaco, Western Australia 6008

T +61 8 9286 6999

M +61 409 938-784

F +61 8 9286 6969

Email: greg.cochran@deepyellow.com.au

Email: info@deepyellow.com.au

Website: www.deepyellow.com.au





Appendices



JORC Resource Summary – June 2012



Deposit	Category	Cut-off (ppm U ₃ O ₈)	Tonnes (M)	U ₃ O ₈ (ppm)	U ₃ O ₈ (t)	U ₃ O ₈ (Mlb)
NAMIBIA						
Omahola Project						
INCA ♦	Indicated	250	7.0	470	3,300	7.2
INCA ♦	Inferred	250	5.4	520	2,800	6.2
Ongolo #	Indicated	250	14.7	410	6,027	13.2
Ongolo #	Inferred	250	5.8	380	2,204	4.8
MS7 #	Indicated	250	3.3	430	1,400	3.2
MS7 #	Inferred	250	2.0	540	1,100	2.4
Omahola Project Total			38.2	441	16,831	37.0
Tubas-TRS Project						
Tubas-TRS	Inferred	70	87.0	148	12,876	28.4
Tubas-TRS Project Total			87.0	148	12,876	28.4
Tubas-Tumas Palaeochannel						
Tumas ♦	Indicated	200	14.4	366	5,270	11.6
Tumas ♦	Inferred	200	0.4	360	144	0.3
Tubas-Calcrete	Inferred	100	7.4	374	2,767	6.1
Tubas-Tumas Palaeochannel Total			22.2	369	8,181	18.0
Aussinanis Project						
Aussinanis ♦	Indicated	150	5.6	222	1,243	2.7
Aussinanis ♦	Inferred	150	29.0	240	6,960	15.3
Aussinanis Project Total			34.6	237	8,203	18.0
TOTAL - NAMIBIA			182.0	253	46,091	101.4
AUSTRALIA						
Napperby Project (NT)						
Napperby	Inferred	200	9.3	359	3,351	7.4
Napperby Total			9.3	359	3,351	7.4
Mount Isa Project (QLD)						
Mount Isa	Indicated	300	2.2	470	1,050	2.3
Mount Isa	Inferred	300	2.5	450	1,120	2.5
Mount Isa Total			4.7	460	2,170	4.8
TOTAL - AUSTRALIA			14.0	394	5,521	12.2
TOTAL INDICATED RESOURCES			47.2	387	18,290	40.2
TOTAL INFERRED RESOURCES			148.8	224	33,322	73.4
TOTAL RESOURCES			196.0	263	51,612	113.6

Notes: Figures have been rounded and totals may reflect small rounding errors
XRF chemical analysis unless annotated otherwise
♦ eU₃O₈ - equivalent uranium grade as determined by downhole gamma logging
Combined XRF Fusion Chemical Assays and eU₃O₈ values

JORC Compliance Statements



Namibia

The information in this report that relates to Exploration Results, Mineral Resources or Ore Reserves is based on information compiled by Dr Leon Pretorius, a Fellow of the Australasian Institute of Mining and Metallurgy. Dr Pretorius, Managing Director of Reptile Uranium Namibia (Pty) Ltd has sufficient experience which is relevant to the style of mineralisation and type of deposit under consideration and to the activity which he is undertaking, to qualify as a Competent Person as defined in the 2004 Edition of the 'Australasian Code for Reporting of Exploration Results, Mineral Resources and Ore Reserves'. Dr Pretorius consents to the inclusion in the report of the matters based on his information in the form and context in which it appears.

The information in this report that relates to the **Ongolo, MS7 and INCA** Mineral Resources is based on work completed by Mr Neil Inwood and Mr Doug Corley. Mr Inwood is a Fellow of the Australasian Institute of Mining and Metallurgy and Mr Corley is a member of the Australian Institute of Geoscientists. Messrs Inwood and Corley have sufficient experience which is relevant to the style of mineralisation and type of deposit under consideration and to the activity which they are undertaking to qualify as a Competent Persons as defined in the 2004 Edition of the 'Australasian Code for Reporting of Exploration Results, Mineral Resources and Ore Reserves'. Messrs Inwood and Corley consent to the inclusion in the report of the matters based on his information in the form and context in which it appears. Messrs Inwood and Corley are full-time employees of Coffey Mining.

The information in this report that relates to the **TRS and Tubas** Mineral Resource is based on information compiled by Mr Willem H. Kotzé Pr.Sci.Nat MSAIMM. Mr Kotzé is a Member and Professional Geoscientist Consultant of Geomine Consulting Namibia CC. Mr Kotzé has sufficient experience which is relevant to the style of mineralisation and type of deposit under consideration and to the activity which he is undertaking to qualify as a Competent Person as defined in the 2004 Edition of the 'Australasian Code for Reporting of Exploration Results, Mineral Resources and Ore Reserves'. Mr Kotzé consents to the inclusion in this release of the matters based on his information in the form and context in which it appears.

The information in this report that relates to the **Aussinanis and Tumas** Mineral Resources is based on work completed by Mr Jonathon Abbott who is a full time employee of Hellman and Schofield Pty Ltd and a Member of the Australasian Institute of Mining and Metallurgy. Mr Abbott has sufficient experience which is relevant to the style of mineralisation and type of deposit under consideration and to the activity which he is undertaking, to qualify as a Competent Person as defined in the 2004 Edition of the 'Australasian Code for Reporting of Exploration Results, Mineral Resources and Ore Reserves' and as a Qualified Person as defined in the AIM Rules. Mr Abbott consents to the inclusion in the report of the matters based on his information in the form and context in which it appears.

Queensland

The information in this report that relates to Exploration Results, Mineral Resources or Ore Reserves is based on information compiled by Mr Martin Kavanagh, a Fellow of The Australasian Institute of Mining and Metallurgy. Mr Kavanagh is an Executive Director of Deep Yellow Limited and has sufficient experience which is relevant to the style of mineralisation and type of deposit under consideration and to the activity which he is undertaking, to qualify as a Competent Person as defined in the 2004 Edition of the 'Australasian Code for Reporting of Exploration Results, Mineral Resources and Ore Reserves'. Mr Kavanagh consents to the inclusion in the report of the matters based on his information in the form and context in which it appears.

The information in this report that relates to the Queensland Mineral Resource is based on information compiled by Mr Neil Inwood. Mr Inwood is a Member of The Australasian Institute of Mining and Metallurgy. Mr Inwood is employed by Coffey Mining Pty Ltd and has sufficient experience which is relevant to the style of mineralisation and type of deposit under consideration and to the activity which he is undertaking, to qualify as a Competent Person as defined in the 2004 Edition of the 'Australasian Code for Reporting of Exploration Results, Mineral Resources and Ore Reserves'. Mr Inwood consents to the inclusion in the report of the matters based on his information in the form and context in which it appears.

Northern Territory

The information in this report that relates to the **Napperby Project** Mineral Resource is based on information compiled by Mr Daniel Guibal who is a Fellow (CP) of the Australasian Institute of Mining and Metallurgy. Mr Guibal is a full time employee of SRK Consulting and has sufficient experience which is relevant to the style of mineralisation and type of deposit under consideration and to the activity which he is undertaking, to qualify as a Competent Person as defined in the 2004 Edition of the 'Australasian Code for Reporting of Exploration Results, Mineral Resources and Ore Reserves'. Mr Guibal consents to the inclusion in the report of the matters based on his information in the form and context in which it appears.

Where eU3O8 values are reported it relates to values attained from radiometrically logging boreholes with Auslog equipment using an A675 slimline gamma ray tool. All probes are calibrated either at the Pelindaba Calibration facility in South Africa or at the Adelaide Calibration facility in South Australia.