

Deep Yellow Limited

Building for the Future



Creating Opportunity In A Uranium Downturn

African Down Under Conference, Perth 6 – 8 Sept, 2017

John Borshoff - Managing Director / CEO



ASX : DYL

OCT : DYLLF

Deep Yellow

- ✱ **A re-energised, well-funded and advanced uranium explorer**
- ✱ **Differentiated from other mid-sized uranium companies**
- ✱ **New management & core team installed**
 - Unique experience and skillset from the formation and growth of Paladin Energy
- ✱ **Dual strategy for growth with expansion and consolidation**
- ✱ **Strong shareholder and partner support for accretive, long-term growth strategy**

Corporate Overview

Board

Rudolf Brunovs	Chairman
John Borshoff *	Managing Director / CEO
Gillian Swaby *	Director
Christophe Urtel	Director
Mervyn Greene	Director
Justin Reid *	Director
Mark Pitts	Company Secretary

Executives and Management

Perth

John Borshoff *	Managing Director / CEO
Gillian Swaby *	Corporate / Finance
Ed Becker *	Head of Exploration
Ursula Pretorius	Financial Controller

Namibia

Martin Hirsch	Exploration Manager
----------------------	---------------------

* *Ex-Paladin Executive team*

Capital Structure – 17 July 2017

Shares on Issue	190
Market Cap (@ A\$0.25 / share)	A\$47.5M
Net Cash	~ A\$14.5M
<u>Major Shareholders</u>	
Sprott Group Affiliate	15.9%
Collines Investments	10.3%
Directors & Management	6.3%

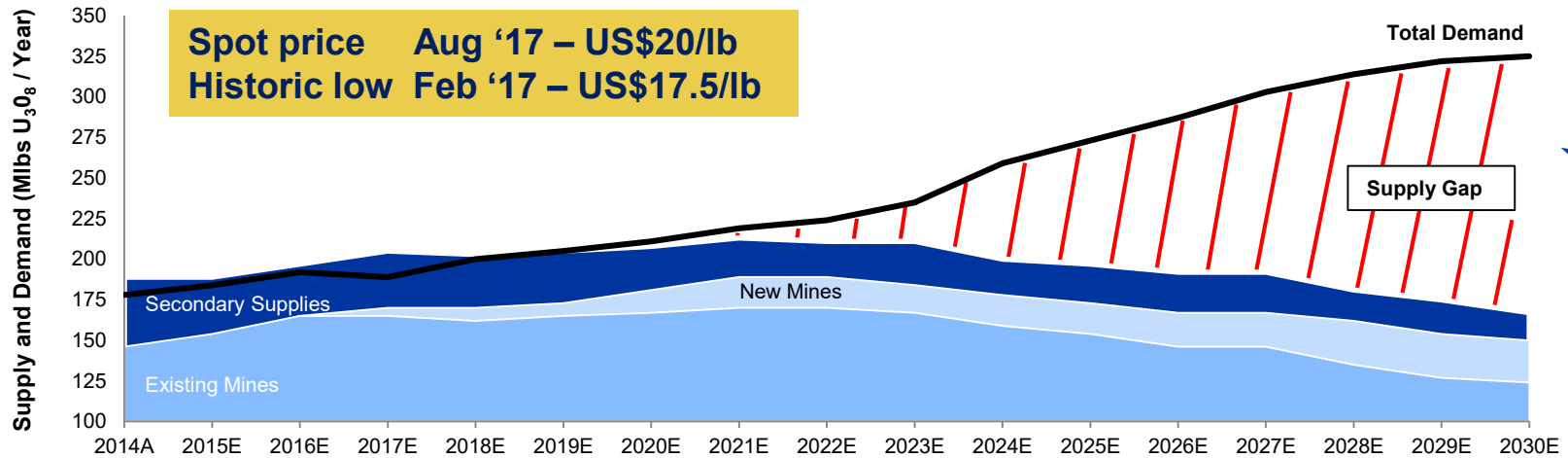
Share Price Development



Presentation Outline

- ✱ **Uranium in Downturn (but with a fantastic future)**
- ✱ Growth Opportunity – Perfect for a Contrarian Play
- ✱ Project Status
- ✱ Conclusions

Supply Deficit Consensus but Price Anomaly Persists



Sources: World Nuclear Association, Raymond James

NUCLEAR DEMAND STRONG – URANIUM PRICE LAG CLEAR

Date/Event	Operable Reactors	Under Construction	Planned	Proposed	U Required	Prevailing U price
Feb 2011 (pre-Fukushima)	443	62	156	322	69ktU	\$73/lb
Aug 2017	447	58	162	349	68ktU	\$20/lb

Source: World Nuclear Association

Extreme potential for prices to substantially overshoot incentive pricing

Supply Gap and New Production Capability

- ✱ **Uranium supply growth in the mid to longer term is highly uncertain**
- ✱ **Some nervousness amongst nuclear utilities:**
 - Supply shortage is inevitable – whether that occurs in 2020 or 2022 is irrelevant
 - Certainty of future uranium supply is the core concern for utilities
- ✱ **This reality will cause progressive upward price movement**
 - There is clear potential for the price to overshoot
- ✱ **Few companies with proven capability to build and operate large production capacity to fill the emerging uranium supply shortage**

A narrow window of opportunity exists to build a company that is capable of capitalising on this situation

Presentation Outline

- ✱ Uranium in downturn (but with a fantastic future)
- ✱ **Growth Opportunity – Perfect for a Contrarian Play**
- ✱ Project Status
- ✱ Conclusions

Ingredients for a Successful Contrarian Play

- ✱ A commodity in serious downturn at an extreme condition
- ✱ Investors hate the commodity
- ✱ Few believe the story
- ✱ Need a team and leadership with high credibility and extensive knowledge
- ✱ Need hard-to-get financial backer to support a contrarian play

During the last 8 year uranium cycle: 2003-2011

Some Enjoyed Truly Exceptional Gains

- Uranium “bluechip” Cameco Corp: **+1233%**
- Explorer Energy Fuels: **+4130%**
- Explorer Mega Uranium: **+3152%**
- Explorer Uranium Resources: **+10172%**

Then, an anomaly...

- ▶ **A rare, once-in-a-lifetime case of Paladin,
the firm founded by John Borshoff: **+86900%****

“John Borshoff is now at the helm of Deep Yellow, doing the early work that caused Paladin to become a success in the last cycle.”

Vision for Growth – Key Objectives

- ✱ **Gain value through contrarian investment**
- ✱ **Adopt a dual strategy for growth**
 - Build the in-ground inventory from existing, prospective Namibian projects
 - Build a multi-project global uranium platform through accretive acquisitions
- ✱ **Enhance the Namibian cornerstone projects**
 - Strong potential for new discoveries and resource expansion within existing tenements
- ✱ **Establish a multi-project, global uranium development platform with both growth potential and future production optionality**
 - Develop a project pipeline capable of eventually supporting 5–10Mlb annual production
- ✱ **Create a genuine independent, alternative supplier for utilities**
 - Give confidence a new dependable uranium supplier can come on-stream



Presentation Outline

- ✱ Uranium in downturn (but with a fantastic future)
- ✱ Growth Opportunity – Perfect for a Contrarian Play
- ✱ **Project Status**
- ✱ Conclusions

Deep Yellow – Namibian Projects

Situated within the proven, exceptionally prospective Namibian Uranium Province contains Resources of 1.5Blb* (Measured & Indicated) plus 350Mlb* (Inferred) U_3O_8 all within a 50km radius. Additionally, to date the region has produced 320Mlb* U_3O_8 .

*Source: WNA (March 2017)

Highly favourable jurisdiction

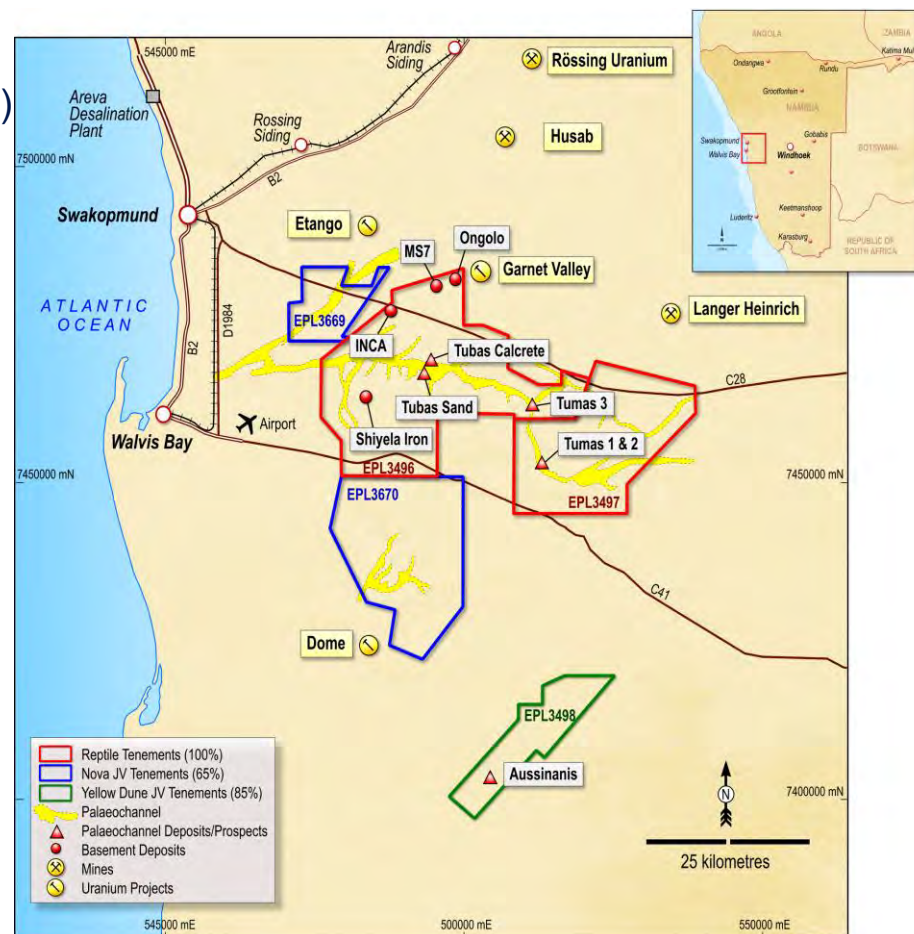
- Palaeochannel/calcrete targets (Langer Heinrich style)
- Basement/alaskite targets (Rössing/Husab style)

Reptile: (EPLs 3496/97) – 991km² (100%)

- Re-interpretation identified new discovery and significant new targets.
- Existing resources 95Mlb U_3O_8
- Targeting 150Mlb+ uranium resource base

Nova JV: (EPLs 3669/70) – 599km² (65%)

- New strategic farm-in agreement with leading Japanese partner JOGMEC
- Must spend A\$4.5M in 4 years to earn 39.5%
- Final equities on earn-in: Deep Yellow (Manager) 39.5%, JOGMEC 39.5%, Toro 15%, Sixzone 6%.



Palaeochannels Highly Prospective



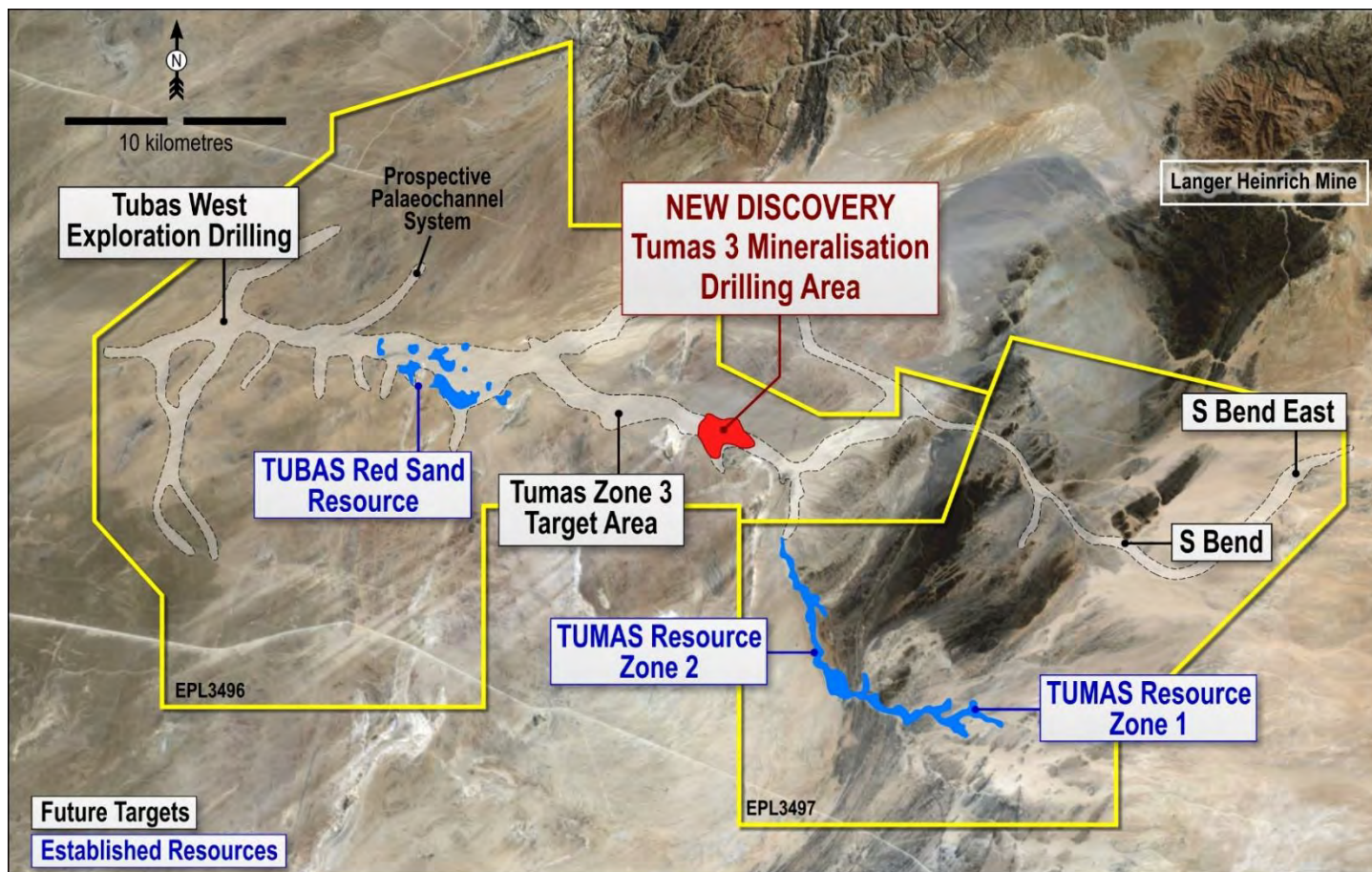
Re-interpretation and target delineation work in past 10 months:

- Defined Tumas 3, S Bend and S Bend East as priority exploration areas
- Confirmed 100km of highly prospective palaeochannels inadequately tested



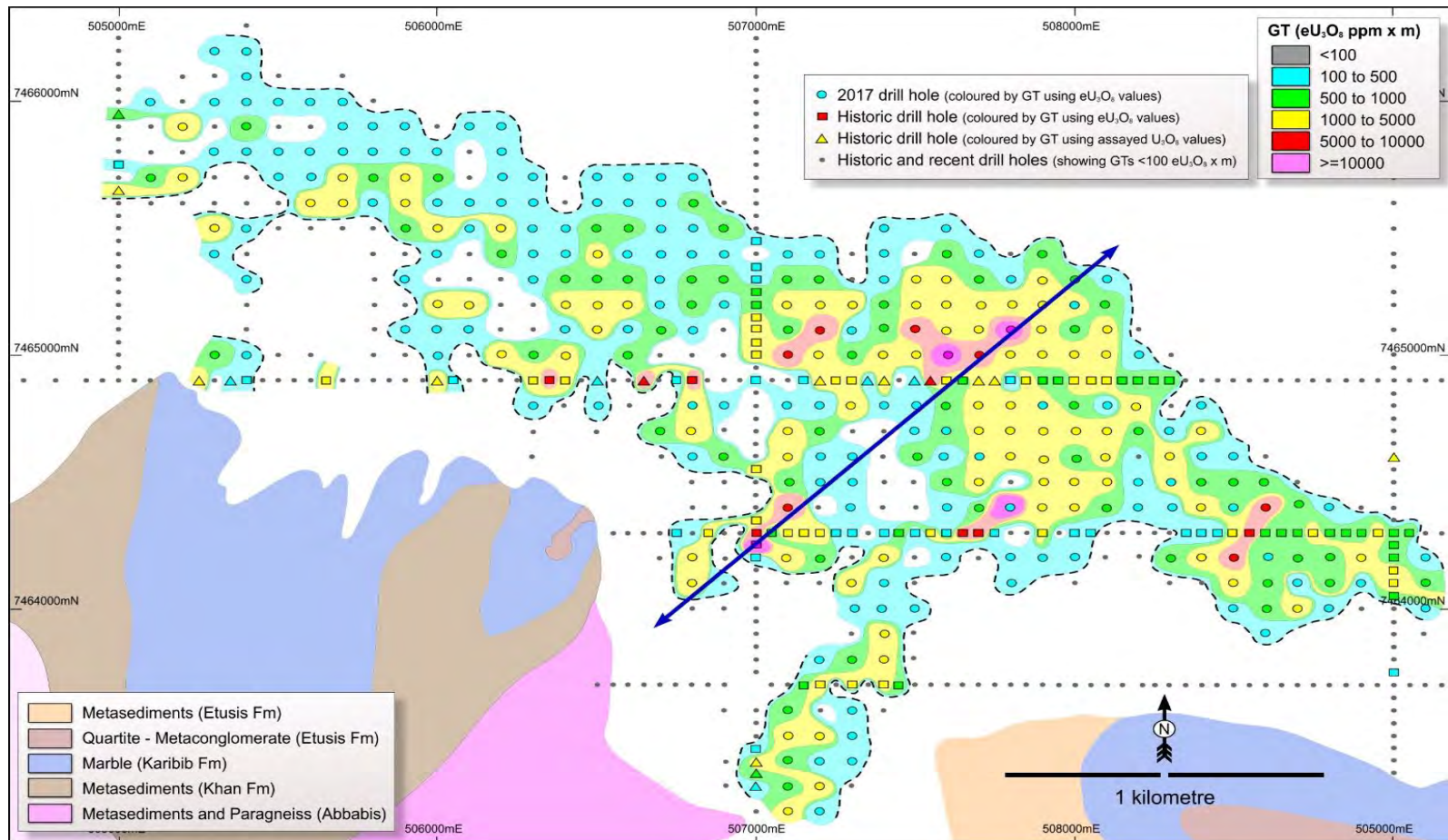
New uranium discovery at Tumas 3 with March/June drilling:

- Results shows similar characteristics to mineralisation at the Langer Heinrich mine



Tumas 3 Uranium Discovery

- ✱ Uranium intersected in 284 of 400 holes drilled 100m x 100m
- ✱ Mineralisation over 4.4km - open E and W
- ✱ Maiden resource estimate expected in late September 2017

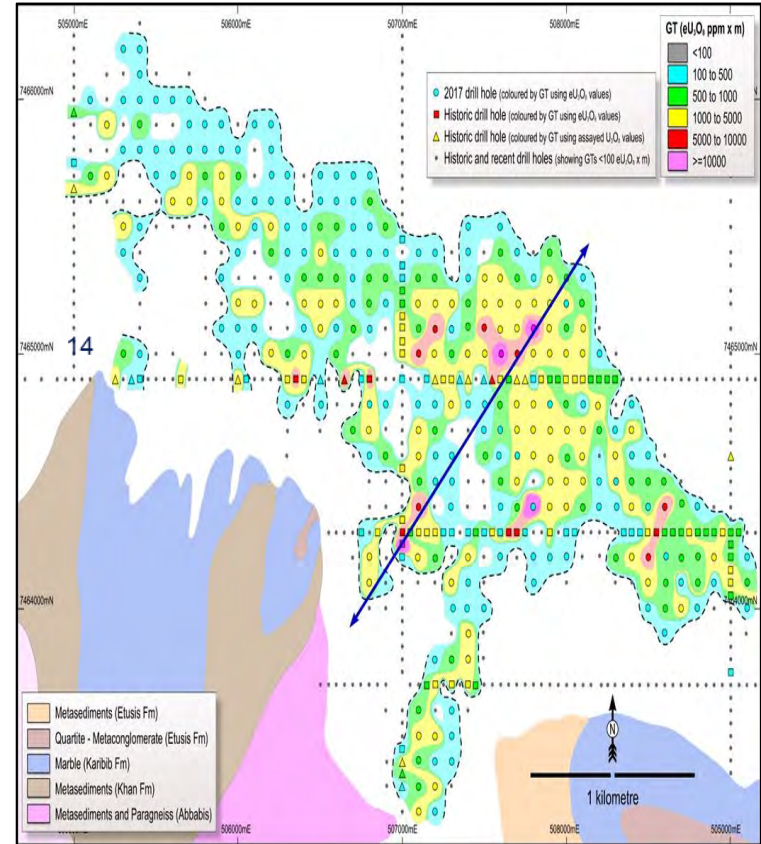


Tumas 3 – Key Drilling Results



Significant Intersections

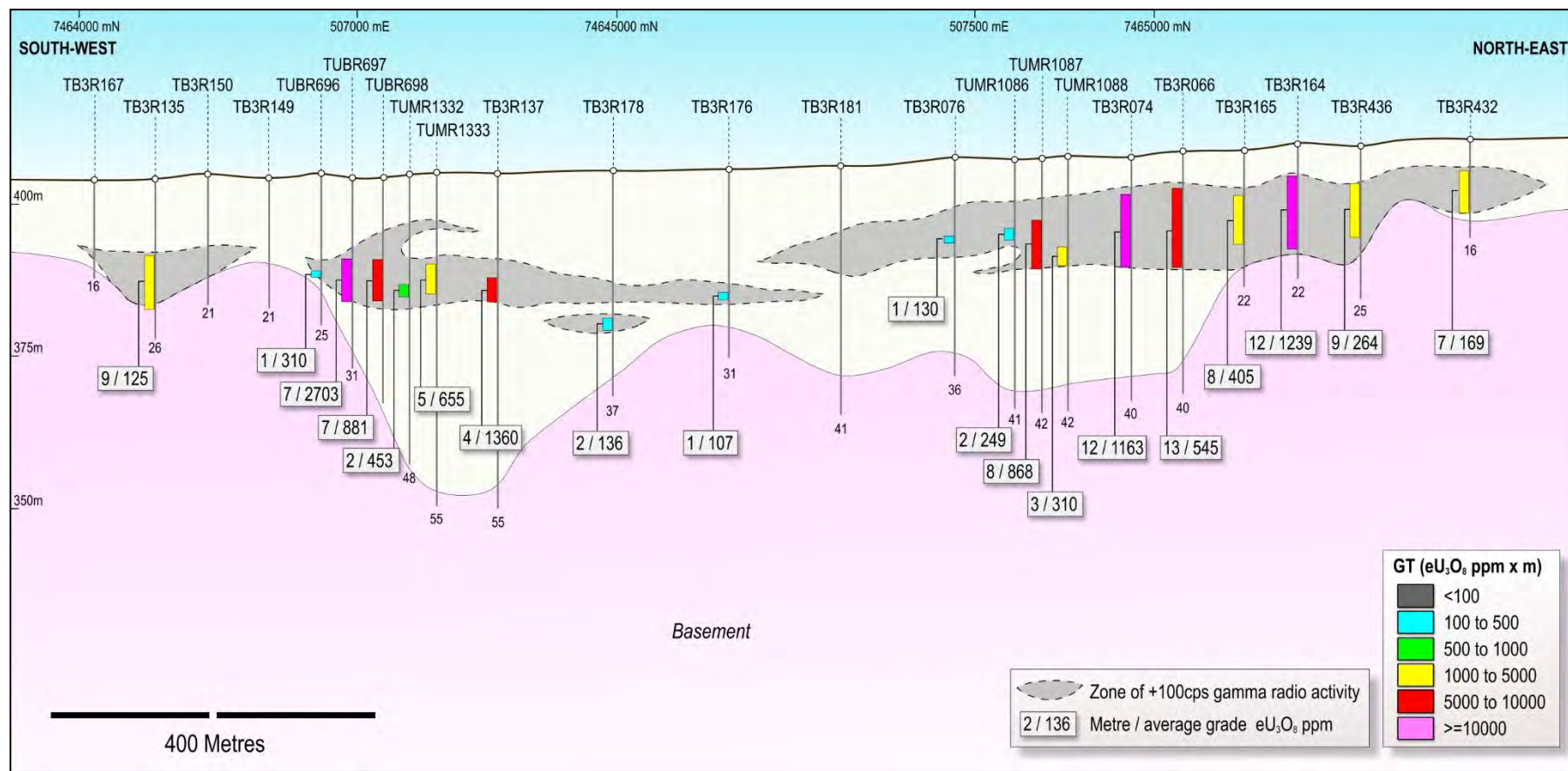
Thickness (m)	Grade (eU ₃ O ₈)	Depth from (m)
4	1,360ppm	17.1
12	1,239ppm	5.1
12	1,163ppm	6.1
3	1,044ppm	8.1
14	999ppm	6.1
6	710ppm	9.1
12	704ppm	7.1
13	664ppm	7.1
5	651ppm	13.1
7	635ppm	9.1
5	565ppm	13.1
9	559ppm	10.1



Tumas 3 – Drillhole Cross Section

🔬 **Mineralised zone 200m - 900m wide in channel sediments**

🔬 **Flat lying/near surface 1m - 21m deep**



Presentation Outline

- ✱ Uranium in downturn (but with a fantastic future)
- ✱ Growth Opportunity – Perfect for a Contrarian Play
- ✱ Project Status
- ✱ **Conclusions**

Key Takeaways



New focus and positioning for the next uranium cycle

- Strategy now clearly defined under new management
- Strategic Alliance with Sprott in place and investor base regenerated
- Well funded with ~\$14.5M cash post June capital raising



Building the premier global uranium consolidation vehicle

- Establish a geographically diversified asset base
- Namibian projects returning excellent early results including an exciting new discovery
- Acquire assets spanning advanced exploration and early development
- Establish a platform with production optionality and value creation opportunities



Management team with a successful track record of execution

- Uranium market analogous to the depressed conditions of ~15 years ago making an opportunity for high wealth creation with contrarian investment approach
- Unrivalled experience in project acquisition, exploration, construction and operation



THANK YOU

Contact Details

Deep Yellow Limited

Unit 17, Level 2

Spectrum Building, 100 Railway Rd
Subiaco, Western Australia 6008

T +61 8 9286 6999

Email: info@deepyellow.com.au

John Borshoff

Managing Director/CEO

Email:

john.borshoff@deepyellow.com.au

Website: www.deepyellow.com.au



ASX - DYL

OTC - DYLLF

NSX - DYL

Disclaimer and Competent Person Statement

This document has been prepared by Deep Yellow Limited (Deep Yellow, DYL or the Company) in connection with providing an overview to interested analysts and investors.

This presentation is being provided for the sole purpose of providing information to enable recipients to review the business activities of Deep Yellow. This presentation is thus by its nature limited in scope and is not intended to provide all available information regarding Deep Yellow. This presentation is not intended as an offer, invitation, solicitation, or recommendation with respect to the purchase or sale of any securities. This presentation should not be relied upon as a representation of any matter that a potential investor should consider in evaluating Deep Yellow.

Deep Yellow and its affiliates, subsidiaries, directors, agents, officers, advisers or employees do not make any representation or warranty, express or implied, as to or endorsement of, the accuracy or completeness of any information, statements, representations or forecasts contained in this presentation, and they do not accept any liability or responsibility for any statement made in, or omitted from, this presentation. Deep Yellow accepts no obligation to correct or update anything in this presentation.

No responsibility or liability is accepted and any and all responsibility and liability is expressly disclaimed by Deep Yellow and its affiliates, subsidiaries, directors, agents, officers, advisers or employees for any errors, misstatements, misrepresentations in or omissions from this presentation.

Any statements, estimates, forecasts or projections with respect to the future performance of Deep Yellow and/or its subsidiaries contained in this presentation are based on subjective assumptions made by Deep Yellow's management and about circumstances and events that have not yet taken place. Such statements, estimates, forecasts and projections involve significant elements of subjective judgement and analysis which, whilst reasonably formulated, cannot be guaranteed to occur. Accordingly, no representations are made by Deep Yellow or its affiliates, subsidiaries, directors, officers, agents, advisers or employees as to the accuracy of such information; such statements, estimates, forecasts and projections should not be relied upon as indicative of future value or as a guaranteed of value or future results; and there can be no assurance that the projected results will be achieved.

Prospective investors should make their own independent evaluation of an investment in Deep Yellow.

Nothing in this presentation should be construed as financial product advice, whether personal or general, for the purposes of section 766B of the Corporations Act 2001 (Cth). This presentation consists purely of factual information and does not involve or imply a recommendation or a statement of opinion in respect of whether to buy, sell or hold a financial product. This presentation does not take into account the objectives, financial situation or needs of any person, and independent personal advice should be obtained.

This presentation and its contents have been made available in confidence and may not be reproduced, or disclosed to third parties or made public in any way without the express written permission of Deep Yellow.

The information in this presentation is based on and fairly represents information and supporting documentation prepared or reviewed by Mr Martin Hirsch, a Competent Person who is a Member of the Institute of Materials, Mining and Metallurgy (IMMM) in the UK. Mr Hirsch, who is currently the Exploration Manager for Deep Yellow's subsidiary, Reptile Mineral Resources and Exploration (Pty) Ltd, has sufficient experience which is relevant to the style of mineralisation and type of deposit under consideration and to the activity which he is undertaking, to qualify as a Competent Person as defined in the 2004 Edition of the 'Australasian Code for Reporting of Exploration Results, Mineral Resources and Ore Reserves' and the 2012 Edition of the 'Australasian Code for Reporting of Exploration Results, Mineral Resources and Ore Reserves'. Mr Hirsch consents to the inclusion in this presentation of the matters based on the information in the form and context in which it appears.

Mineral Resource Estimates disclosed in this presentation and compiled under the JORC Code 2004 have not yet been updated to comply with the JORC Code 2012 on the basis that the information has not materially changed since it was last reported.