

ASX ANNOUNCEMENT

ASX CODE: DYL

Quarterly Report – For the Period Ended 31 March 2009

Highlights:

30 April 2009

NAMIBIA

- Drilling to depth at the INCA uraniferous magnetite project on 50 by 50 metre centres to test a deep seated electromagnetic anomaly has led to the discovery of a continuous zone of primary uranium mineralisation at ± 200 metre depth which is open in all directions. As announced on 23 April the best intersections from the three discovery holes include:

**10 m of 7,293 ppm (or 0.73%) U_3O_8 from 228 m;
59 m of 604 ppm U_3O_8 from 204 m; and,
20 m of 1,734 ppm U_3O_8 from 206 m.**

- The new discovery at INCA means that many of the well mineralised 100 metre deep holes drilled over the initial 2.5 by 2.0 kilometre area on 100 by 100 metre centres will have to be deepened and infilled in order to fully test the potential of the project area.
- At the Tumas palaeochannel prospect the 2008 drill programme returned a JORC Indicated and Inferred Mineral Resource totalling 10.0 million tonne at 0.0345% (345 ppm) U_3O_8 at a cut-off grade of 200 ppm U_3O_8 for 3,450 tonne or 7.6 million pounds of contained U_3O_8 .

AUSTRALIA

Queensland

- At the Isa West Project the Eldorado, Bambino, Turpentine and Thanksgiving prospects will be drilled out in detail for JORC Code resource estimations. On the Ewen EPM the Slance and Conquest Prospects will be drilled and on the Prospector EPM the Queens Gift Prospect will similarly be tested to depth.
- The first downhole gamma logging results from current ongoing RC drilling at Eldorado North Prospect in the Isa West Project returned best intersections of:

**6 m at 2,216 ppm eU_3O_8 from 15 m
7 m at 1,764 ppm eU_3O_8 from 22 m
5 m at 1,369 ppm eU_3O_8 from 59 m
5 m at 1,049 ppm eU_3O_8 from 28 m
7 m at 1,772 ppm eU_3O_8 from 40 m**

Northern Territory

- **Napperby Farm-out** – Toro Energy Limited (Toro) announced a resource upgrade for the Napperby uranium deposit which now totals **9.34 million tonnes at 359 ppm (0.036%) U₃O₈ at a cut-off grade of 200 ppm U₃O₈ for 3,351 tonne or 7.39 million pounds of contained U₃O₈**. Toro have also commenced a scoping study for the project and resource drilling will recommence in July 2009. Toro is targeting between 5,700 and 6,200 tonnes of U₃O₈ at Napperby.
- **Mt Liebig Project:** Work area clearance for an Aircore drill programme will commence in early May. The 100% owned project area is contiguous to the southwest of Napperby and DYL will target palaeochannel and deeper roll-front style uranium mineralisation within the tenements.

CORPORATE

- In February 2009 DYL announced it had entered into agreement to joint venture into EPM 14367 held by **Universal Resources Ltd**, 20 km northeast of Mt Isa. Two historic prospects have been identified by DYL for RC percussion drilling.
- **Cash position at 31 March 2009 - \$47.5 million.**
- DYL received a payment of **\$500,000 from Uranio Limited** discharging the debt owed. DYL remains a 9.8% shareholder of Uranio.

JORC RESOURCES							
JORC Resources	Category	Tonne	U ₃ O ₈ (ppm)	U ₃ O ₈ (%)	U ₃ O ₈ (kg/t)	U ₃ O ₈ (t)	U ₃ O ₈ (lb)
Reptile Uranium Namibia							
Tubas #	Inferred	77,278,820	228	0.0228	0.228	17,620	38,852,100
Tumas*	Indicated	9,000,000	343	0.0343	0.343	3,087	6,806,835
Tumas*	Inferred	1,000,000	360	0.0360	0.360	360	793,800
Tubas Red Sand	Validating Data	-	-	-	-	-	-
Aussinanis	Validating Data	-	-	-	-	-	-
Inca	Drilling in Progress	-	-	-	-	-	-
Reptile Project Total		87,278,820	241	0.0241	0.241	21,067	46,452,735
Napperby Uranium Project							
Napperby*	Inferred	9.34	359	0.0359	0.36	3,351	7,390,000
Napperby Project Total		9,340,000	359	0.0359	0.36	3,351	7,390,000
TOTAL RESOURCES		96,618,820	253	0.0253	0.253	24,418	53,842,735

100 ppm cut-off
* 200 ppm cut-off

Conversion 1 kg = 2.205 lb

EXPLORATION - NAMIBIA

DYL's activities in Namibia are carried out by its wholly owned subsidiary Reptile Uranium Namibia (Pty) LTD (Reptile).

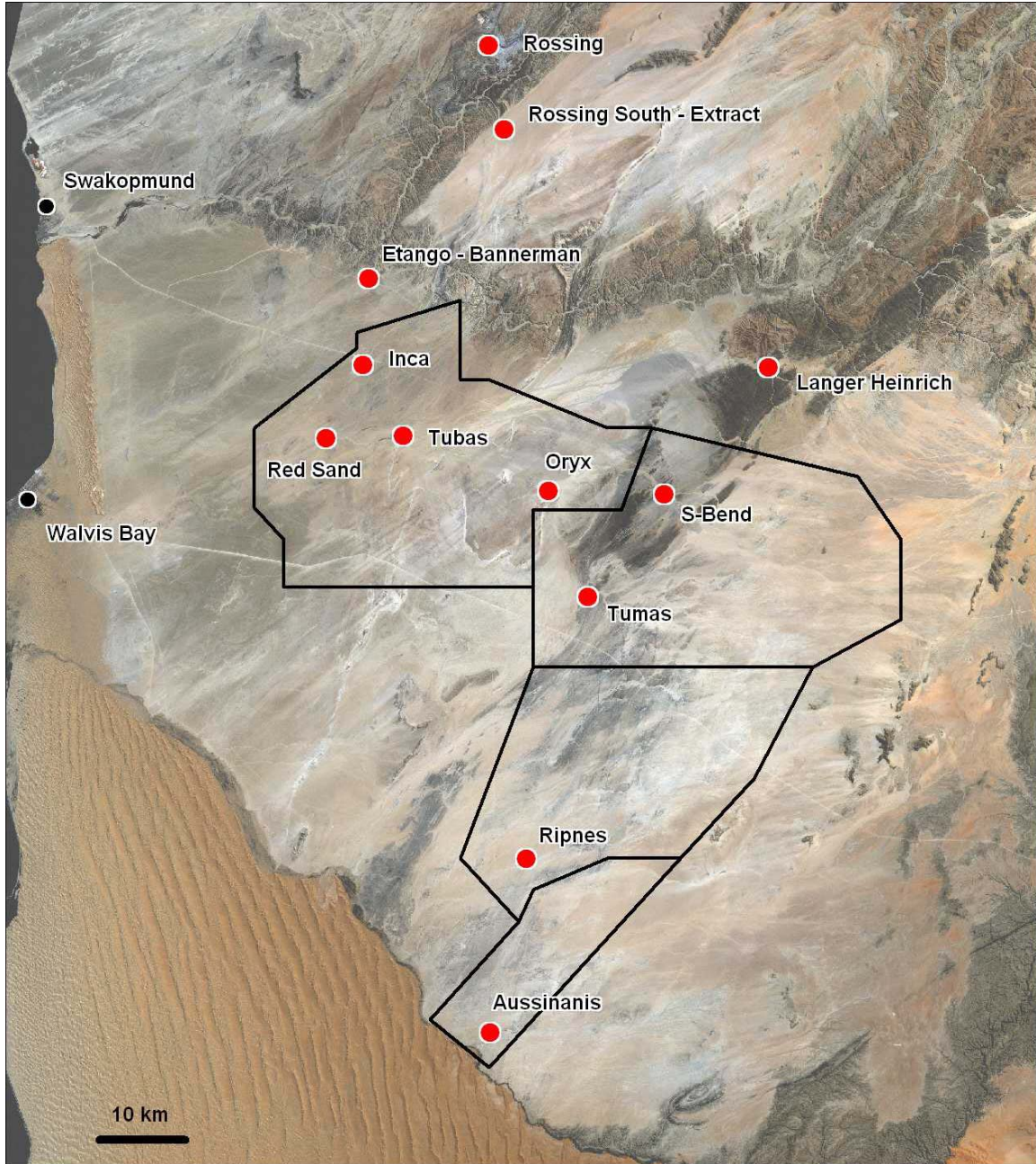


Figure 1: Locality map showing Reptile's 4 EPLs and projects plus uranium mines and projects held by other companies in the area.

Activities since restart of work in mid-January has centred mainly on drilling at the INCA uraniumiferous magnetite project; reconnaissance drilling on deep seated airborne electromagnetic (AEM) anomalies; reconnaissance drilling of AEM interpreted palaeochannels and, ongoing assaying, compilation verification and auditing of data from drilling completed during 2008 for JORC Code resource estimations on the sheetwash and palaeochannel calcrete hosted uranium mineralisation.

For personal use only

SUMMARY AND STATISTICS**Drilling and Assaying:**

DRILLING SUMMARY		
Project	Number of Holes	Total Metre Drilled
Tubas RC	108	12,025
INCA DH	4	1,044
Tubas	3	336
INCA Deeps Recon	3	843
Total	118	14,248

Table 1: Laboratory Performance Indicators

Job Description	Jan 09	Feb 09	Mar 09	TOTAL
Samples Received (Total metre drilled for January to March 2009)	3,296	4,777	5,072	13,145
Samples Crushed	0	0	0	0
Samples Split	997	911	604	2,512
Samples Checked in Pb-Block	5,084	6,413	5,911	17,408
Samples > 10 CPS	1,108	1,429	1,077	3,614
Samples Weighed	1,736	1,713	1,832	5,281
Samples packed & stored	5,104	6,493	6,162	17,759
Samples Milled	2,033	2,000	1,591	5,624
Samples Analysed (Repeats, QC's & Daily checks included)	993	1,013	498	2,504
Sample results reported	720	785	204	1,709

PROJECTS AND EXPLORATION ACTIVITIES

1. INCA Project. Although some wider spread evaluation drilling has continued on the project area, drilling has become focussed on a 300 x 500 metre block in the southwest portion of the synclinal structure where drilling outlined close to surface mineralisation (see Appendix 1). This detail grid area is being drilled out at 50 x 50 metre by vertical RC drilling, but some 25 metre spaced RC and diamond holes (vertical and angle) are being completed to better understand the geology, structure and distribution of the mineralisation

A complete listing of all mineralised holes drilled since January at the INCA Project is given in Appendix 1.

Significant intercepts for the initial 100 metre deep holes and deepened holes are listed below in Table 2 i.e. the drilling above 200 metre depth. Table 3 lists the significant intercepts for the **INCA Deeps** mineralised zone i.e. the massive magnetite – skarn mineralisation encountered below 200 metre depth.

As reported to the ASX on 29 April in the INCA Project Update there is **continuity of mineralisation** from shallow depths in south through to the INCA Deeps mineralised zone where the extensive multiple mineralised (shallow) intercepts merge with the deep massive mineralisation.

Table 2: INCA Project - Significant Intercepts from vertical RC holes above 200 metre depth

Drillhole	Location – WGS84 (m E) (m N)		TD	From (m)	To (m)	Width (m)	eU ₃ O ₈ ppm	cU ₃ O ₈ ppm
INCR105	488900	7476650	199	183	196	13	1,576	NA
INCR106	488700	7476650	199	36	48	12	1,089	NA
INCR107	488901	7476549	199	38	50	12	471	NA
INCR108	488801	7476549	199	50	66	16	1,056	NA
and				143	148	5	638	NA
INCR109	488700	7476549	199	26	34	8	1,130	NA
INCR111	488850	7476650	199	87	98	11	509	NA
INCR160	488700	7476750	NC	81	92	11	2,819*	NA

* Chemical uranium values

Table 3: INCA Deeps - Significant Intercepts from vertical RC holes below 200 metre depth

Drillhole	Location – WGS84 (m E) (m N)		TD	From (m)	To (m)	Width (m)	eU ₃ O ₈ ppm	cU ₃ O ₈ ppm
INCR139	488700	7476900	229	206	226	20	1,829	1,734
INCR147	488800	7476900	249	210	234	24	697	544
INCR150	488750	7476950	240**	228	238	10	NA	7,293
INCR150R	488745	7476950	**	233	269	36	634	NA
INCR152	488700	7476950	270	204	263	59	867	604
INCR156	488750	7476900	270	209	252	43	530	424
INCR167	488750	7476850	249	195	210	15	540	NA

Note: All holes ended in mineralisation or magnetite and metasomatic alteration associated with the uranium mineralisation.

** Hole INCR150 failed due to the RC hammer shearing off in the hole at 240 metre. The hole is being redrilled as INCR150R, 5 metre to the west, but due to its exceptionally high chemical assays is reported here although incomplete.

Approximately 30 holes remain to be drilled within the detail grid area including the deepening of some previously drilled (100 metre deep) holes as a result of the discovery of substantial high grade mineralisation at depth (ASX 23 April 2009).

Four RC drill rigs and one diamond rig have recently been employed on the project. The extreme fracturing associated with structural deformation within the synclinal axis together with the amount of water and open spaces present have rendered RC drilling at depth unsuitable. In future all deep drilling will be done as HQ diamond core tails to RC drill holes (ASX 29 April 2009). This change in the programme will delay JORC Code resource estimations, but the metallurgical and other preliminary scoping studies will continue.



INCA Deeps RC and Diamond Drilling

2. Reconnaissance deep drilling on AEM anomalies has seen three targets tested without successfully discovering new uranium mineralisation. The presence of magnetite and pyrrhotite at depth explains the AEM anomaly. Further evaluation of the remaining 80-odd targets will continue as time allows. Results from the programme are given in Appendix 1 as holes INRC501 and 506.

3. Evaluation of AEM Palaeochannel Targets. RC drilling across the strike of a buried AEM channel anomaly in the northern portion of the Tubas EPL successfully delineated a calcrete filled channel which is weakly mineralised (Figure 2). The channel drains the extensive outcropping Alaskite terrane to the north of the tenement boundary. Further work will be carried out on this discovery in the future. Results from the programme are given in Appendix 1 as holes INRC711 to INRC730.

For personal use only

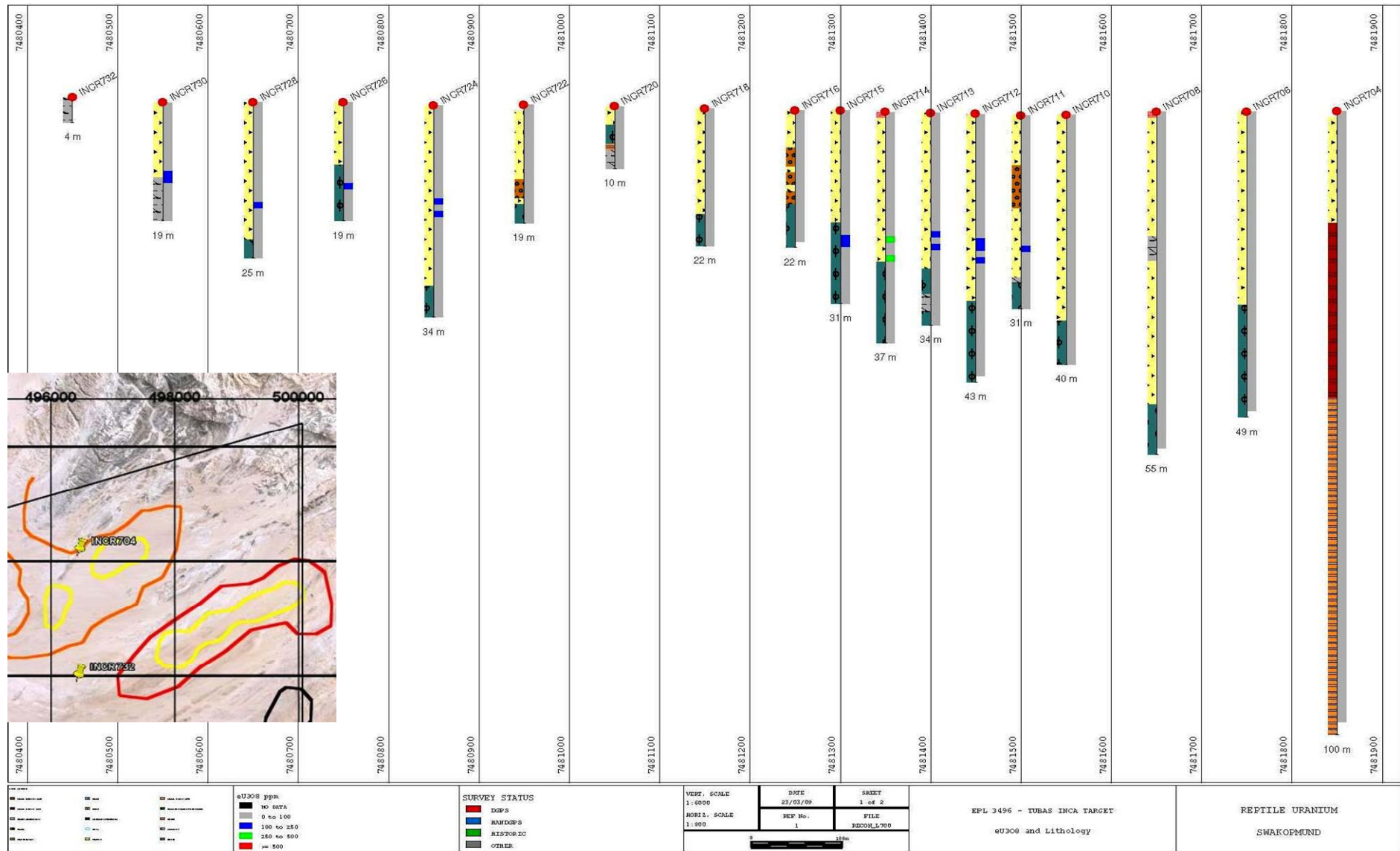


Figure 2: Palaeochannel off Alaskite – Indicates unknown potential

RC drilling on the AEM interpreted possible extensions to the west and south of the Langer Heinrich (LHU) palaeochannel continues with 2 RC rigs. Three possible options for the location of the extension to the channel have been identified and are being tested with a number of reconnaissance lines each one being several kilometre long (Figure 3).

To date Line 3 has been drilled with a calcrete filled valley up to 120 metre deep being located but no uranium was present. Line 6 is now being drilled and Lines 7 to 10 will follow.

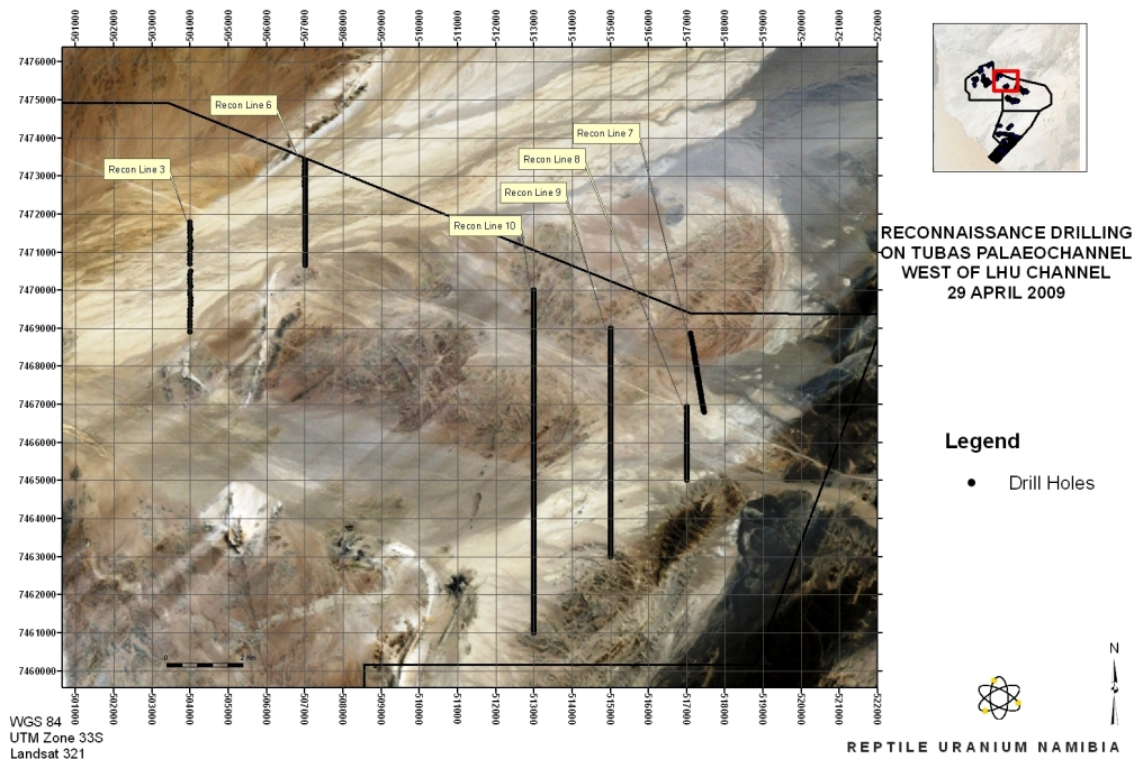


Figure 3: Location of reconnaissance RC holes on possible LHU channel extensions

4. Overall JORC Code resource estimations of calcrete hosted uranium associated with sheetflow and palaeochannel drilling completed in 2008 has been delayed due to the sheer volume of data and of course the increased activity on the INCA Project. Another associated problem has been an inbuilt software offset on the downhole gamma logging tools which has been found to cause correlation problems with chemical assays. This problem is very close to being resolved with the supplier which will allow for equivalent uranium factors to be finalised and used going forward.

In the interim, using the heap leach model being employed by Areva at their Namibian Trekkopje Project DYL has **31,337 tonne of U₃O₈ (69.1 million pounds U₃O₈)** (see Tables 4 and 5) contained in similar calcareous material at the same grade available for future extraction by heap leach should this method be proven viable. It is envisaged that the already completed drilling at Aussinanis, Ripnes, S-Bend and Tumas extensions will augment this resource quite substantially.

With respect to the December 2008 target of outlining 50,000 tonne U₃O₈ DYL anticipates that once the additional JORC Code resource estimates have been finalised for the Aussinanis and Tubas Red Sand deposits that the total resource will be close to that target.

Drilling by DYL has not been able to increase the grade of the historic resources contained in extensive fluvial sheetwash systems that were vended/merged into the Company in 2007. From July 2007 through to December 2008 almost 10,000 holes were drilled into these sheetwash systems at Tubas, Tumas and Aussinanis resulting in the delineation of potential heap leach resources with a grade of approximately 150 ppm U₃O₈.

The primary target at Reptile has been the discovery of deep palaeochannel systems below and between the historic shallow resources. These deeper channels have now been identified by the AEM data and subsequent drilling has confirmed deep mineralised channels at Tumas West and Oryx. Drilling in 2009 will target these deeper channels for Langer Heinrich style calcrete hosted uranium mineralisation.

The Tubas Red Sand JORC Code resource data will probably be the first to be finalised followed by that related to Aussinanis.

Table 4: Tubas JORC Inferred Resources – Geomine Estimate November 2007

Cut off Grade (ppm U ₃ O ₈)	Grade (ppm U ₃ O ₈)	Tonne (million)	U ₃ O ₈ (tonne)
50	126	209.70	26,499
60	149	159.12	23,787
70	168	130.18	21,936
80	190	105.59	20,104
90	209	89.77	18,776
100 *	228	77.28	17,612
110	257	62.77	16,111
120	286	52.18	14,902
140	325	41.64	13,537
200	455	22.79	10,369

* Cutoff for the Tubas JORC Code resource was 100 ppm U₃O₈.
To convert tonnes U₃O₈ to pounds U₃O₈ multiply the tonne by 2205.

Table 5: Tumas JORC Mineral Resource – H&S Estimate March 2009

Cut off Grade (ppm U ₃ O ₈)	Indicated		Inferred		Total	
	Tonne (million)	ppm U ₃ O ₈	Tonne (million)	ppm U ₃ O ₈	Tonne (million)	ppm U ₃ O ₈
50	44.0	153	6	140	50.0	151
100	25.2	213	3	210	28.2	213
150	14.9	276	2	280	16.9	276
200 †	9.0	343	1	360	10.0	345
250	5.7	412	0.6	430	6.3	414
300	3.8	482	0.4	510	4.2	485

† Cutoff for the Tumas JORC Code resource was 200 ppm U₃O₈.

Total combined JORC Code resources at 150 ppm for heap leach is 31,337 tonne U₃O₈ or 69.1 million pounds U₃O₈.

5. Tumas to Oryx Palaeochannel Drilling to Restart. Reptile has contracted out an initial 20,000 metre of RC drilling to recommence evaluation of the 13 km long palaeochannel system between Tumas and Oryx starting the second week of May (Figure 4). It is estimated that 100,000 metre of drilling will be required to fully evaluate this area and its extensions.

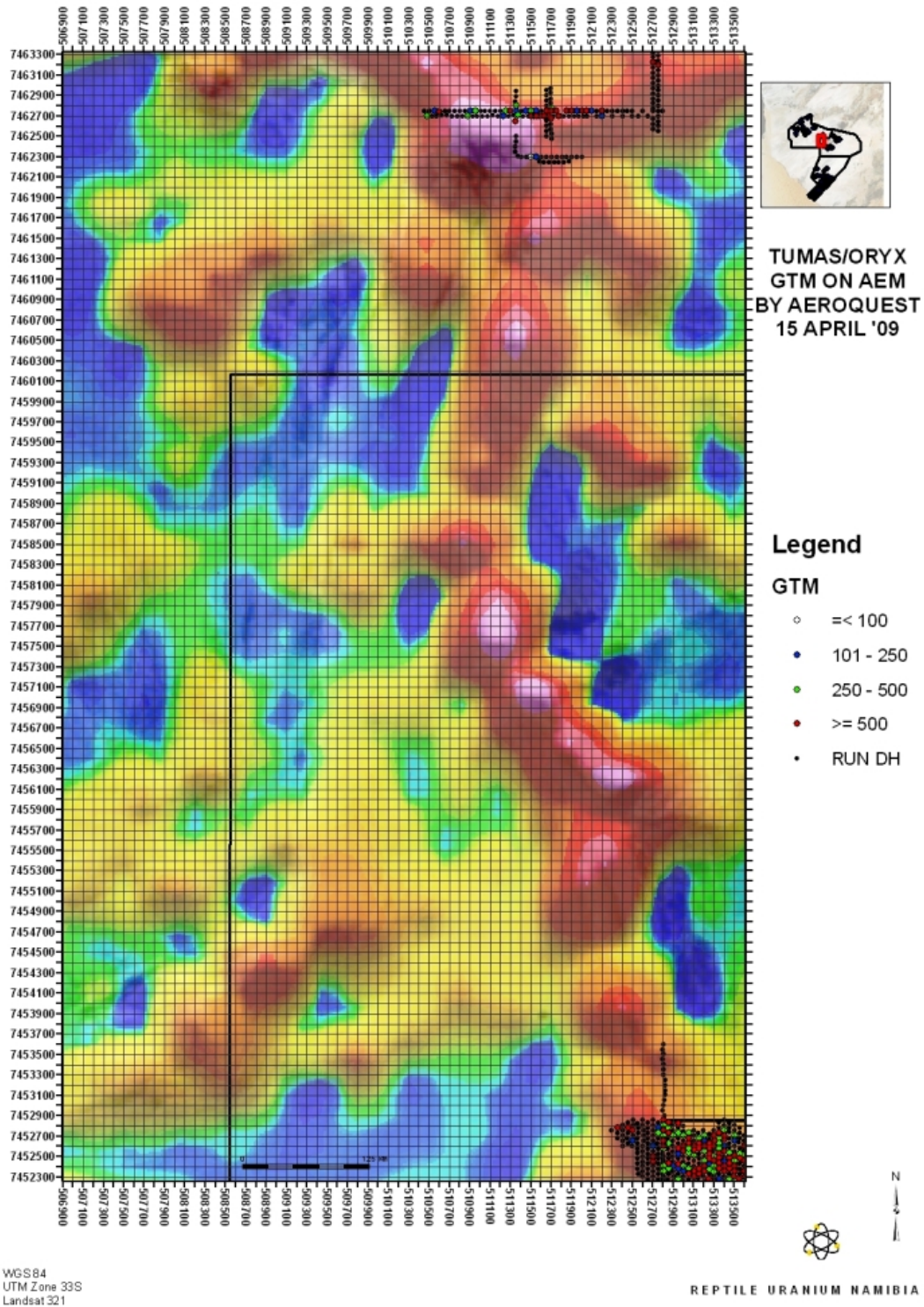


Figure 4: Area to be drilled between the 2008 Tumas resource block in the south and Oryx reconnaissance lines

6. Evaluation of alaskite hosted uranium mineralisation will restart in due course given Extract’s success at Rossing South, specifically given the higher grades returned than previously recognised in the alaskites. DYL has stated previously that the Company does not believe the 200 ppm grades it encountered during drilling of alaskite in the Tubas North area warranted further or immediate work but as can be seen from Figures 5 and 6 the host sequences for Rossing and Rossing South continue into Reptile’s Tubas EPL.

For personal use only

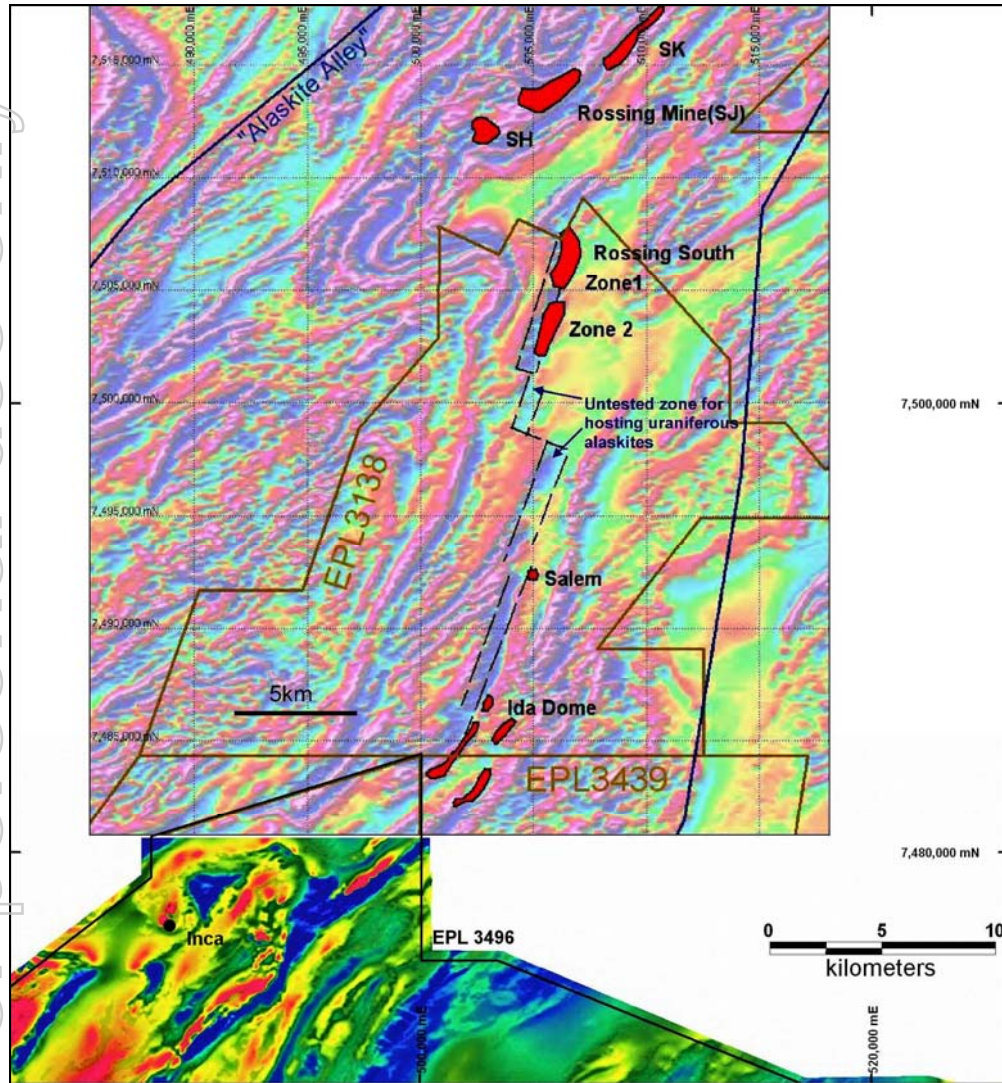


Figure 5: Regional locality map showing location of alaskite hosted mineralisation on aeromagnetic background

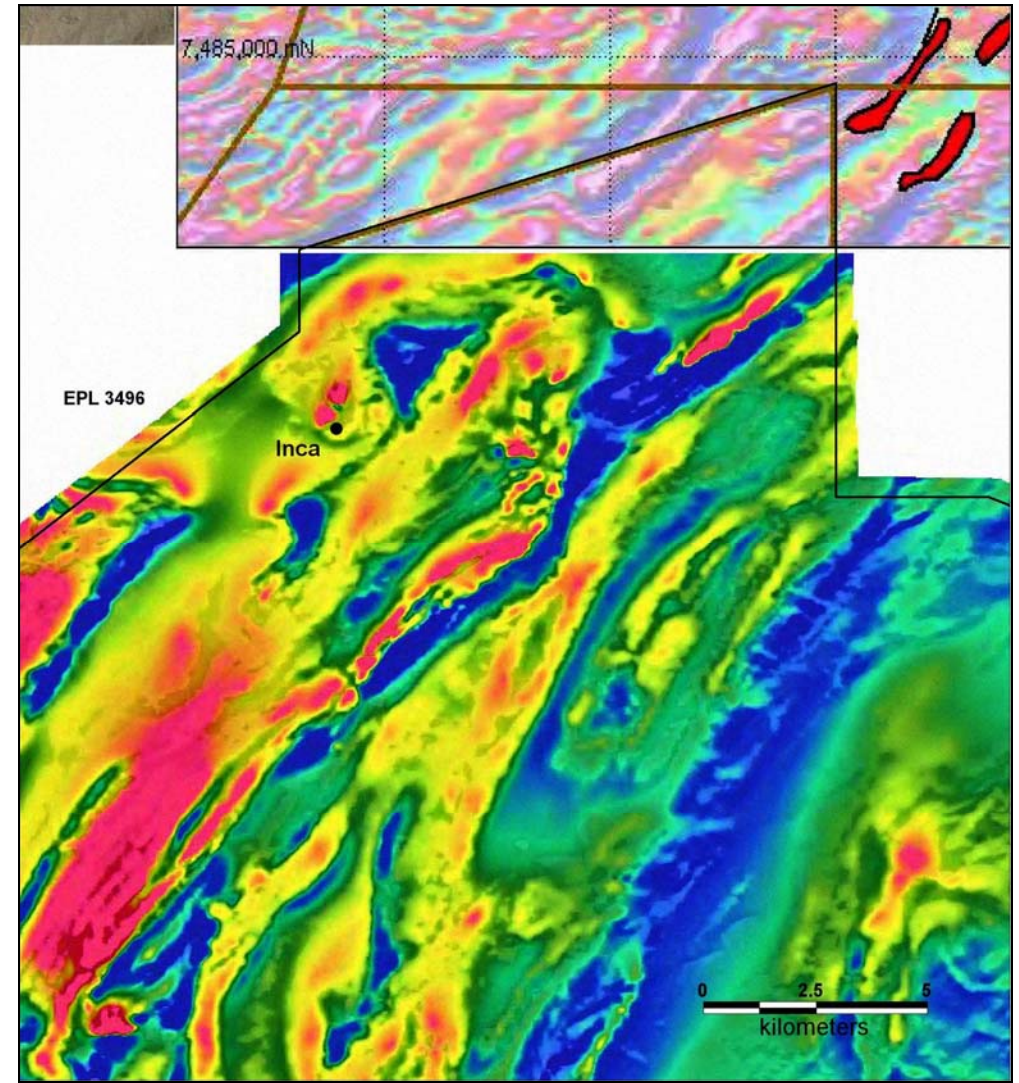


Figure 6: Detail aeromagnetics for northern portion of the Tubas EPL

For personal use only

EXPLORATION - AUSTRALIA

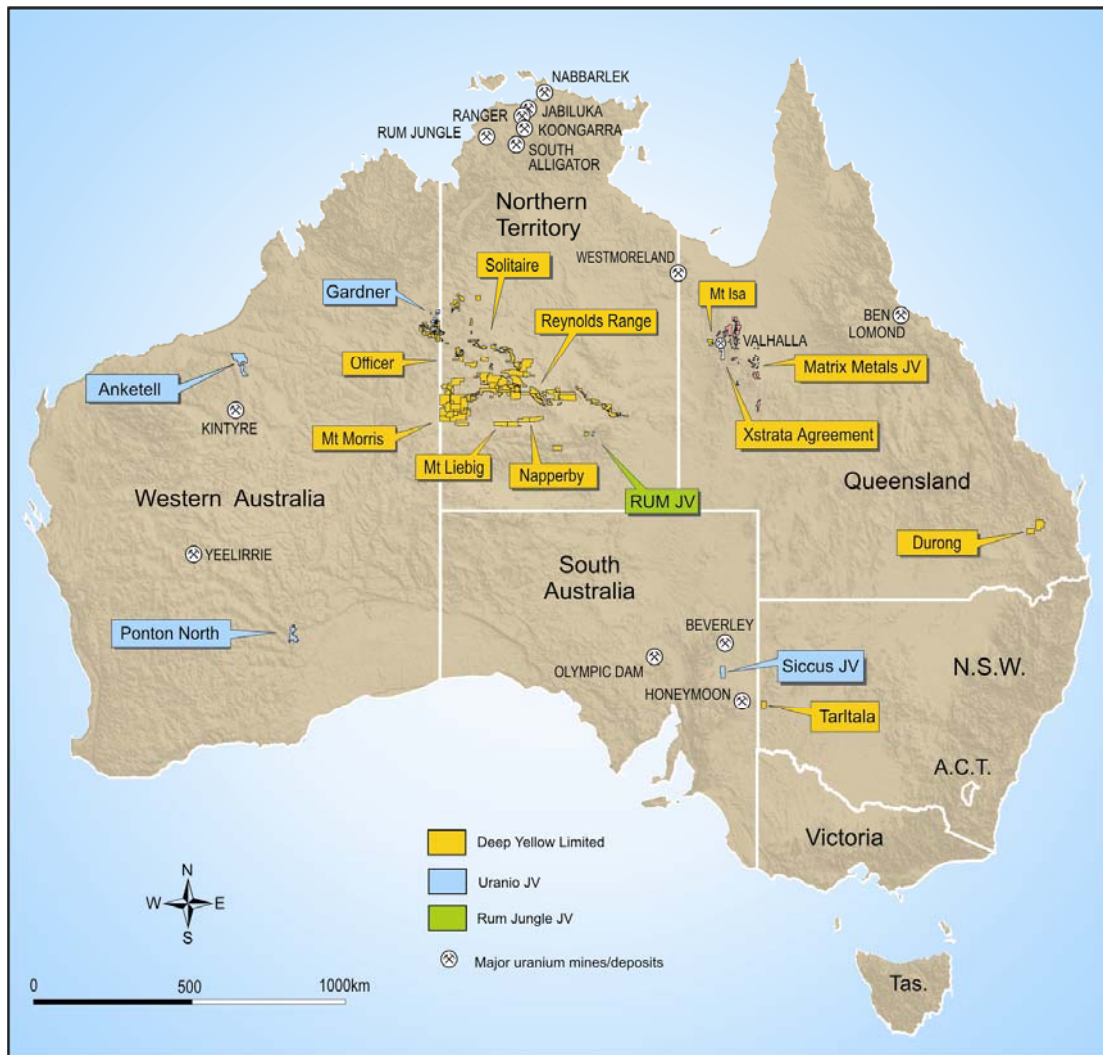


Figure 7: Australian Projects

ISA WEST PROJECT (earning 100% of uranium rights from Xstrata)

Over the wet season break exploration programmes at Isa West were restricted to ground radiometric surveys, prospect mapping and planning of the 2009 drill programme.

Ground Radiometric Surveys: Survey data is now available for the 7 km x 3 km area encompassing the main known uranium prospects (See Figure 8). The detail data will be used to target drill holes in outcrop areas and will be integrated with ground magnetic survey data to evaluate shallow covered areas.

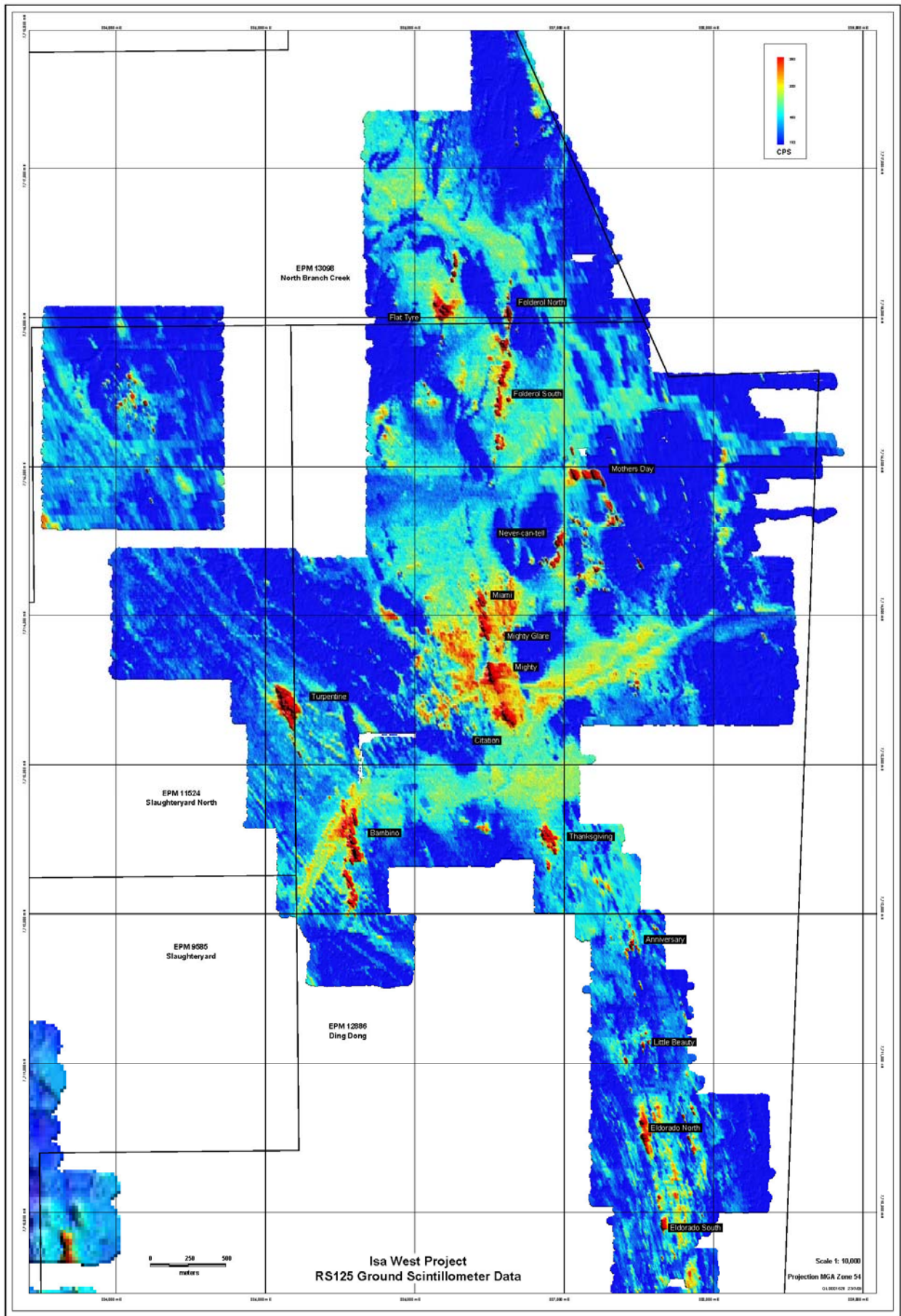


Figure 8: Isa West Ground Radiometric Survey and Prospects

Prospect Mapping: A limited programme of prospect mapping and sampling was initiated following receipt of the ground radiometric survey data.

Five semicontinuous rockchip samples from EPM 12886 and one from EPM 9585 were taken during the quarter and submitted for chemical assay. Geological mapping was undertaken in the areas where the samples were collected. Assay results confirm localised uranium mineralisation at Little Beauty (1,450 ppm U_3O_8), east of Never Can Tell (1,100 ppm U_3O_8) and Slaughter Yard (1,500 ppm U_3O_8). These areas have been identified for follow-up work and may form part of a further programme of RC drilling.

2009 Drill Programme: Planning was completed for an initial 7,000 metre RC drill programme with a contingent 2,000 metre of diamond drilling. The drill programme will focus on the delineation of initial JORC Code resources at the Eldorado, Bambino, Turpentine and Thanksgiving prospects.

Eldorado North: Drilling commenced on 21 April and initial downhole gamma logging results were announced to the ASX on 28 April 2009.

Best intersections from the Eldorado North prospect include:

- **Hole ENRC002** 6 m at 2,216 ppm eU_3O_8 from 15 m
- **Hole ENRC003** 7 m at 1,764 ppm eU_3O_8 from 22 m
- **Hole ENRC004** 5 m at 1,369 ppm eU_3O_8 from 59 m
- **Hole ENRC008** 5 m at 1,049 ppm eU_3O_8 from 28 m
- **Hole ENRC008** 7 m at 1,772 ppm eU_3O_8 from 40 m

The Eldorado results demonstrate the potential of small anomalous outcrop areas to generate a sizeable target at depth.

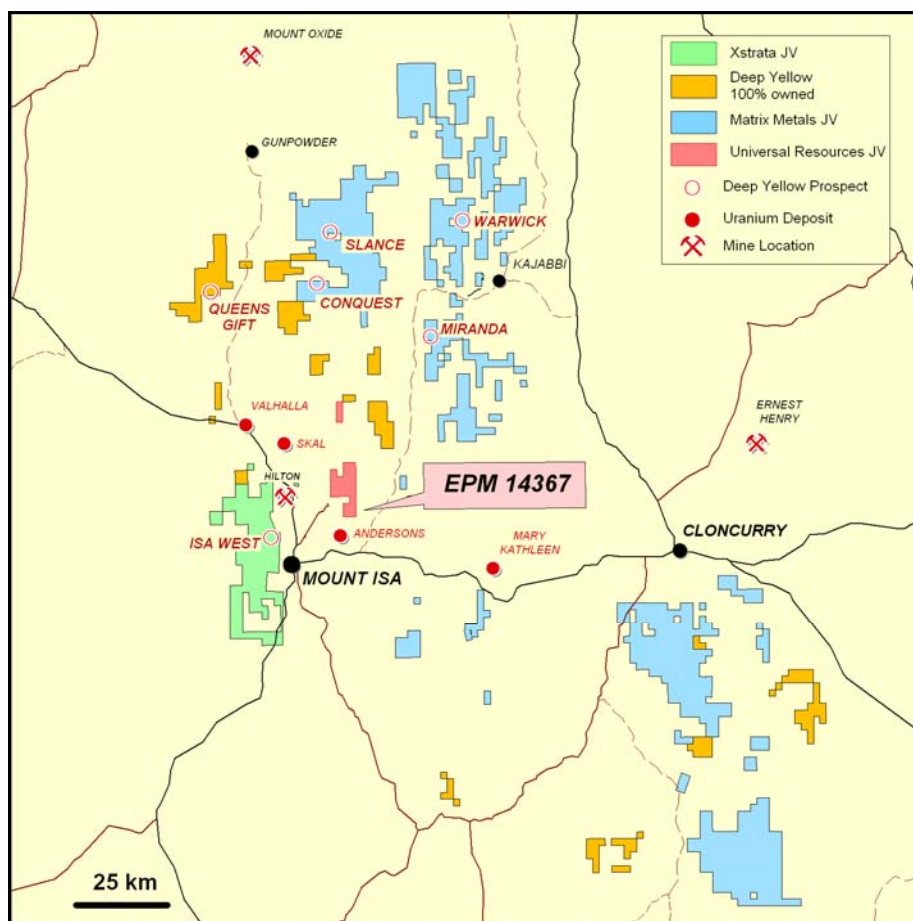


Figure 9: DYL Mt Isa Projects

Mineragraphic Studies: A report was received for 11 RC drill chip and rock samples from Isa West submitted to SGS Laboratories for optical and XRD mineragraphic identification. Importantly high recovery uraninite and coffinite were recognized in an SEM scans of mafic gneiss from the Thanksgiving Prospect.

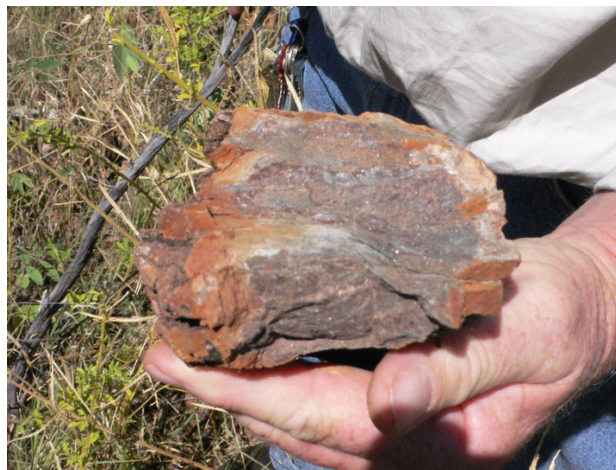
MT ISA URANIUM FARM-IN AND JOINT VENTURE – UNIVERSAL RESOURCES LIMITED

In February DYL announced that it had reached agreement with Universal Resources Limited (Universal) on the terms of a Farm-in Joint Venture on EPM 14367 located 20 km northeast of Mt Isa.

The tenement contains a number of surface radiometric anomalies in Haslingden Group rocks, the host to all major uranium deposits and occurrences in the immediate Mt Isa area. The tenement is located 10 km north of Summit's/Paladin's Anderson deposit and southeast of their Valhalla, Skal and Bikini deposits.

Historic exploration over the tenement was typical of the area and comprises surface trenching and shallow RC/diamond drilling. Surface values for grab samples ranged up to 4,000 ppm U_3O_8 with visible carnotite mineralisation seen at surface. Universal identified 17 surface anomalies of varying intensity that needed further evaluation.

A field visit by DYL to the two main anomalous areas A25 and Big Dip identified extensive zones of hematite-albitite-silica-carbonate alteration returning XRF uranium values of 470 and 360 ppm U_3O_8 respectively.



A25 Prospect – Hematite-Albitite-Silica Altered Basalt



Big Dip Prospect – Intense Hematite altered metasediment with silica-carbonate veining

NORTHERN TERRITORY

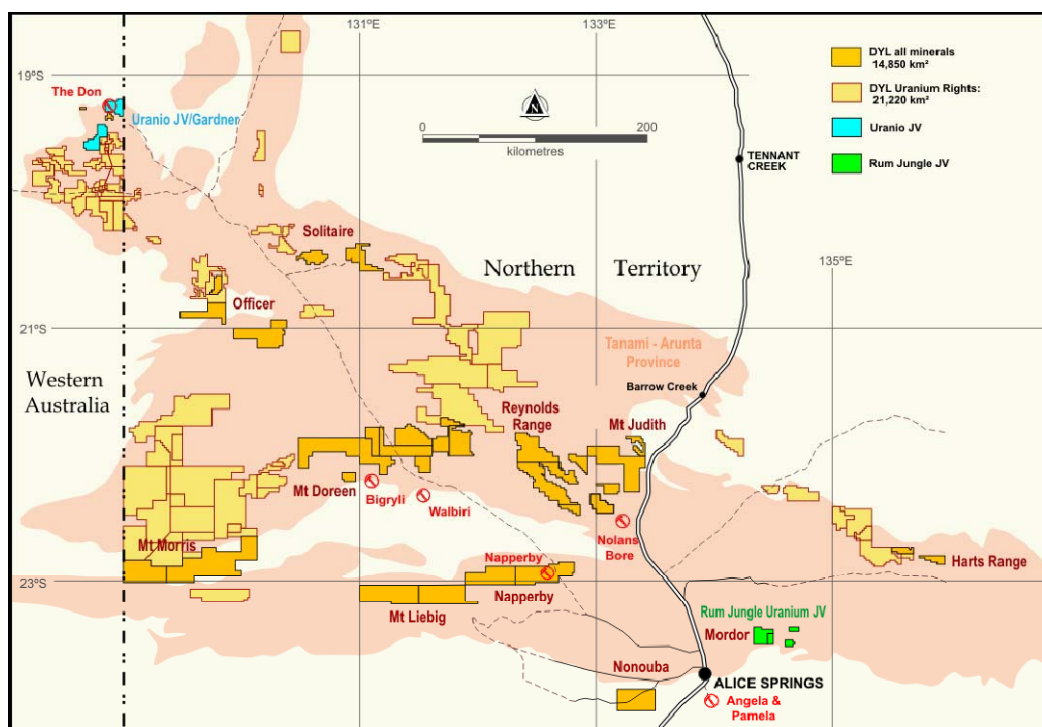


Figure 10: NT Tenement Localities

Mt Liebzig Project

Work area clearance for an Aircore drill programme will commence in early May. The 100% owned project area is contiguous to the southwest of Napperby and DYL will target palaeochannel and deeper roll-front style uranium mineralisation within the tenements. A 5,000 metre aircore drill programme is planned for June-July.

Officer Project

DYL received notification that its application for access to the Officer Project tenements 400 km Northwest of Alice Springs has been successful. The next stage in the process is the formal documentation of an Exploration Agreement.

Napperby (DYL 100% - Toro Energy Limited Option to Purchase)

Toro Energy Limited (Toro) recently announced (TOE ASX 3 March 2009) a resource upgrade for the Napperby uranium deposit which now totals 9.34 million tonnes at 359 ppm (0.036%) U₃O₈ at a cut-off grade of 200 ppm U₃O₈ for 3,351 tonne or 7.39 million pounds of contained U₃O₈. Toro have also commenced a scoping study for the project and resource drilling is planned to recommence in July. Toro is targeting between 5,700 and 6,200 tonnes of U₃O₈ at Napperby.

Napperby Deeps Project (DYL 50% - Toro Energy Limited 50%)

The Napperby Deeps Project agreement is part of the Napperby Option Agreement (4 May 2007) allowing for exploration for non-calcrete uranium mineralisation with 50/50 funding contributions by DYL and Toro.

The JV will target IOCG±U style mineralisation within Proterozoic terrane below about 150 metres of cover sequence. A gravity survey of magnetic targets is planned for next quarter to assist with drill hole targeting.

JOINT VENTURES

Rum Jungle JV (DYL 50%)

During the Quarter Rum Jungle carried out a mapping and sampling programme in the Mordor Pound (EL 10404) following up on an earlier completed gravity survey.

Most of the gravity highs were explained by outcrops of Shonkinite on the margins of the Mordor Alkaline complex. Highly uraniferous pegmatite with field assays up to 0.7% U₃O₈ was found in a patchy outcrop over 50 metre strike length.

XRF field analysis also demonstrated an area of higher copper values which will be followed-up.

CORPORATE

Mt Isa Uranium Joint Venture

DYL has previously announced 9 February 2009 that it had reached agreement with Universal Resources Limited (Universal) on the terms of an Farm-In Joint Venture on EPM 14367 located 20 km northeast of Mt Isa.

DYL's lawyers have prepared a final draft of the Joint Venture Agreement and it is anticipated that the document will be signed by mid May.

Uranio Limited

DYL has reached agreement with Uranio Limited (Uranio) that has resulted in the discharging of debt owed to Deep Yellow.

Uranio has agreed to make an immediate payment of \$500,000 to DYL in settlement of all outstanding liabilities under the original asset acquisition agreement made 21 May 2007 (and as varied). Deep Yellow will retain 100% ownership of the Anketell project in Western Australia and will, subject to regulatory approvals, transfer its 30% interest in the Gardner Range uranium/gold project in Western Australia and its 20% interest in the Siccus Joint Venture (a uranium project in South Australia) to Uranio. DYL will retain its 30% joint venture interest in the Ponton North project tenements (adjacent to the Mulga Rock uranium deposits in Western Australia) and continues to hold 9.8% of the issued share capital of Uranio.



Dr Leon Pretorius
Managing Director

Further Information:

Mr Martin Kavanagh
Executive Director
61 8 9286 6999

The information in this report that relates to Mineral Resources is based on information compiled by Mr. Willem H. Kotzé Pr.Sci.Nat MSAIMM. Mr. Kotzé is a Member and Professional Geoscientist Consultant of Geomine Consulting Namibia CC. Mr. Kotzé has sufficient experience which is relevant to the style of mineralisation and type of deposit under consideration and to the activity which he is undertaking to qualify as a Competent Person as defined in the 2004 Edition of the 'Australasian Code for Reporting of Exploration Results, Mineral Resources and Ore Reserves'. Mr. Kotzé consents to the inclusion in this release of the matters based on his information in the form and context in which it appears.

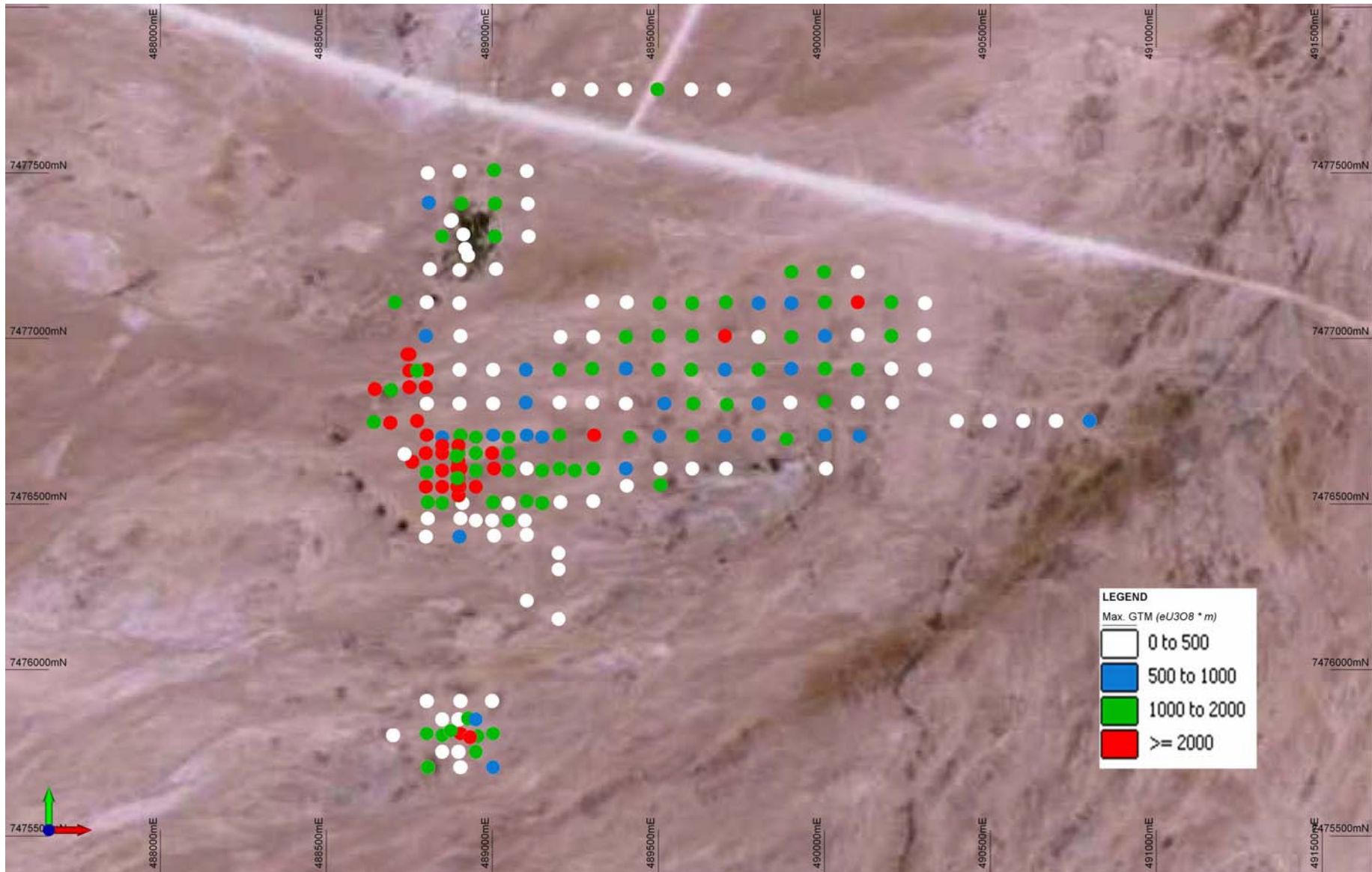
The information in this report that relates mineral resource estimation for Tumas is based on work completed by Mr Jonathon Abbott who is a full time employee of Hellman and Schofield Pty Ltd and a member of the Australasian Institute of Mining and Metallurgy. Mr Abbott has sufficient experience which is relevant to the style of mineralisation and type of deposit under consideration and to the activity which he is undertaking to qualify as a Competent Person as defined in the 2004 Edition of the 'Australasian Code for Reporting of Exploration Results, Mineral Resources and Ore Reserves' and as a Qualified Person as defined in the AIM Rules. Mr Abbott consents to the inclusion in the report of the matters based on his information in the form and context in which it appears.

The information in this report that relates to Gamma Logging Results and their conversion to Equivalent Uranium Grades is based on information compiled by Dr Doug Barrett a Consulting Geophysicist and Member of the Australian Institute of Geoscientists. Dr Barrett has sufficient experience which is relevant to the style of mineralisation and type of deposit under consideration and to the activity which he is undertaking to qualify as a Competent Person as defined in the 2004 Edition of the 'Australasian Code for Reporting of Exploration Results, Mineral Resources and Ore Reserves'. Dr Barrett consents to the inclusion in the report of the matters based on his information in the form and context in which it appears.

The information in this report that relates to Exploration Results, Mineral Resources or Ore Reserves is based on information compiled by Dr Leon Pretorius a Fellow of The Australasian Institute of Mining and Metallurgy. Dr Pretorius has sufficient experience which is relevant to the style of mineralisation and type of deposit under consideration and to the activity which he is undertaking to qualify as a Competent Person as defined in the 2004 Edition of the 'Australasian Code for Reporting of Exploration Results, Mineral Resources and Ore Reserves'. Dr Pretorius consents to the inclusion in the report of the matters based on his information in the form and context in which it appears.

Where eU_3O_8 is reported it relates to values attained from radiometrically logging boreholes with Auslog equipment using an A675 – slimline gamma ray tool. The probe has been calibrated at the Pelindaba Calibration facility in South Africa with calibration certification provided by Geotron Systems (Pty) Ltd a geophysical consultancy based in South Africa. All eU_3O_8 results reported are affected by issues pertaining to possible disequilibrium and uranium mobility which should be taken into account when interpreting those pending confirmatory chemical analyses.

For personal use only



Location of holes drilled at the Inca Project to date

All mineralised drill holes at the Inca Project using a 100 ppm cut-off over 1 m.

* INCD = Diamond drilling and INCR = RC drilling

Hole *	UTM East	UTM North	RL	Date End	TD	DIP	AZ UTM	From	To	Interval	eU ₃ O ₈	GTM
INCD001	488849.092	7476675.296	311.121	12-Feb-09	254.05	-60	270	37	41	4	110	451
INCD001	488849.092	7476675.296	311.121	12-Feb-09	254.05	-60	270	66	78	13	513	6,463
INCD001	488849.092	7476675.296	311.121	12-Feb-09	254.05	-60	270	85	91	6	201	1,207
INCD001	488849.092	7476675.296	311.121	12-Feb-09	254.05	-60	270	93	98	5	575	2,816
INCD001	488849.092	7476675.296	311.121	12-Feb-09	254.05	-60	270	102	106	3	200	669
INCD001	488849.092	7476675.296	311.121	12-Feb-09	254.05	-60	270	119	122	3	219	657
INCD001	488849.092	7476675.296	311.121	12-Feb-09	254.05	-60	270	130	133	3	117	357
INCD001	488849.092	7476675.296	311.121	12-Feb-09	254.05	-60	270	147	149	2	104	203
INCD001	488849.092	7476675.296	311.121	12-Feb-09	254.05	-60	270	193	210	17	213	3,557
INCD001	488849.092	7476675.296	311.121	12-Feb-09	254.05	-60	270	214	215	1	106	111
INCD001	488849.092	7476675.296	311.121	12-Feb-09	254.05	-60	270	245	253	8	185	1,483
INCD001	488849.092	7476675.296	311.121	12-Feb-09	254.05	-60	270	253	254	1	104	146
INCD002	488900.338	7476655.594	311.655	7-Mar-09	497.69	-90	0	20	21	1	147	155
INCD002	488900.338	7476655.594	311.655	7-Mar-09	497.69	-90	0	36	43	6	105	651
INCD002	488900.338	7476655.594	311.655	7-Mar-09	497.69	-90	0	65	72	6	203	1,298
INCD002	488900.338	7476655.594	311.655	7-Mar-09	497.69	-90	0	78	79	1	191	248
INCD002	488900.338	7476655.594	311.655	7-Mar-09	497.69	-90	0	82	84	2	142	221
INCD002	488900.338	7476655.594	311.655	7-Mar-09	497.69	-90	0	89	93	4	109	404
INCD002	488900.338	7476655.594	311.655	7-Mar-09	497.69	-90	0	100	102	2	101	192
INCD002	488900.338	7476655.594	311.655	7-Mar-09	497.69	-90	0	104	115	11	409	4,335
INCD002	488900.338	7476655.594	311.655	7-Mar-09	497.69	-90	0	120	122	2	134	275
INCD002	488900.338	7476655.594	311.655	7-Mar-09	497.69	-90	0	146	150	4	186	828
INCD002	488900.338	7476655.594	311.655	7-Mar-09	497.69	-90	0	174	177	3	156	490
INCD002	488900.338	7476655.594	311.655	7-Mar-09	497.69	-90	0	179	186	7	562	3,963
INCD002	488900.338	7476655.594	311.655	7-Mar-09	497.69	-90	0	198	199	2	2,256	3,497

Hole *	UTM East	UTM North	RL	Date End	TD	DIP	AZ UTM	From	To	Interval	eU3O8	GTM
INCD002	488900.338	7476655.594	311.655	7-Mar-09	497.69	-90	0	212	217	5	292	1,360
INCD002	488900.338	7476655.594	311.655	7-Mar-09	497.69	-90	0	379	380	1	237	237
INCD002	488900.338	7476655.594	311.655	7-Mar-09	497.69	-90	0	436	437	1	131	131
INCD003	488895	7476550	313	26-Mar-09	137.4	-60	180	7	11	4	102	428
INCD003	488895	7476550	313	26-Mar-09	137.4	-60	180	14	16	2	260	455
INCD003	488895	7476550	313	26-Mar-09	137.4	-60	180	24	27	3	184	569
INCD003	488895	7476550	313	26-Mar-09	137.4	-60	180	35	50	14	411	5,967
INCD003	488895	7476550	313	26-Mar-09	137.4	-60	180	50	63	13	558	7,037
INCD003	488895	7476550	313	26-Mar-09	137.4	-60	180	65	70	4	325	1,315
INCD003	488895	7476550	313	26-Mar-09	137.4	-60	180	76	79	3	101	279
INCD003	488895	7476550	313	26-Mar-09	137.4	-60	180	80	86	7	133	887
INCD003	488895	7476550	313	26-Mar-09	137.4	-60	180	88	91	3	109	327
INCD004	488895	7476575	315	21-Mar-09	155.43	-60	180	43	54	10	412	4,265
INCD004	488895	7476575	315	21-Mar-09	155.43	-60	180	54	57	3	737	2,064
INCD004	488895	7476575	315	21-Mar-09	155.43	-60	180	60	65	5	235	1,126
INCD004	488895	7476575	315	21-Mar-09	155.43	-60	180	74	79	4	248	1,103
INCD004	488895	7476575	315	21-Mar-09	155.43	-60	180	83	85	2	299	672
INCD004	488895	7476575	315	21-Mar-09	155.43	-60	180	96	99	3	654	1,929
INCD004	488895	7476575	315	21-Mar-09	155.43	-60	180	110	115	5	255	1,324
INCD004	488895	7476575	315	21-Mar-09	155.43	-60	180	123	124	1	571	600
INCD004	488895	7476575	315	21-Mar-09	155.43	-60	180	132	134	2	423	847
INCD005	488896.947	7476604.444	311.537	30-Mar-09	185.45	-60	180	14	23	9	188	1,683
INCD005	488896.947	7476604.444	311.537	30-Mar-09	185.45	-60	180	24	26	2	102	225
INCD005	488896.947	7476604.444	311.537	30-Mar-09	185.45	-60	180	36	41	5	119	603
INCD005	488896.947	7476604.444	311.537	30-Mar-09	185.45	-60	180	44	46	3	117	344
INCD005	488896.947	7476604.444	311.537	30-Mar-09	185.45	-60	180	52	54	2	100	226
INCD005	488896.947	7476604.444	311.537	30-Mar-09	185.45	-60	180	55	56	2	107	203
INCD005	488896.947	7476604.444	311.537	30-Mar-09	185.45	-60	180	58	71	13	416	5,536

Hole *	UTM East	UTM North	RL	Date End	TD	DIP	AZ UTM	From	To	Interval	eU3O8	GTM
INCD005	488896.947	7476604.444	311.537	30-Mar-09	185.45	-60	180	76	82	6	744	4,354
INCD005	488896.947	7476604.444	311.537	30-Mar-09	185.45	-60	180	93	95	2	181	416
INCD005	488896.947	7476604.444	311.537	30-Mar-09	185.45	-60	180	100	101	2	310	465
INCD005	488896.947	7476604.444	311.537	30-Mar-09	185.45	-60	180	106	110	3	259	895
INCD005	488896.947	7476604.444	311.537	30-Mar-09	185.45	-60	180	114	124	10	171	1,702
INCD005	488896.947	7476604.444	311.537	30-Mar-09	185.45	-60	180	134	136	2	100	231
INCD005	488896.947	7476604.444	311.537	30-Mar-09	185.45	-60	180	171	172	1	873	1,048
INCD006	488897	7476624	311	16-Apr-09	197.35	-60	180	10	11	1	111	111
INCD006	488897	7476624	311	16-Apr-09	197.35	-60	180	14	22	8	154	1,228
INCD006	488897	7476624	311	16-Apr-09	197.35	-60	180	67	70	3	121	363
INCD006	488897	7476624	311	16-Apr-09	197.35	-60	180	77	85	8	398	3,183
INCD006	488897	7476624	311	16-Apr-09	197.35	-60	180	93	95	2	1,024	2,049
INCD006	488897	7476624	311	16-Apr-09	197.35	-60	180	109	110	1	453	453
INCD006	488897	7476624	311	16-Apr-09	197.35	-60	180	118	125	7	176	1,230
INCD006	488897	7476624	311	16-Apr-09	197.35	-60	180	130	131	1	147	147
INCD006	488897	7476624	311	16-Apr-09	197.35	-60	180	139	147	8	553	4,423
INCD006	488897	7476624	311	16-Apr-09	197.35	-60	180	161	162	1	224	224
INCD006	488897	7476624	311	16-Apr-09	197.35	-60	180	184	185	1	133	133
INCD007	488775	7476900	311	27-Apr-09	315	-90	0	45	46	1	224	224
INCD007	488775	7476900	311	27-Apr-09	315	-90	0	187	195	8	188	1,500
INCD007	488775	7476900	311	27-Apr-09	315	-90	0	199	200	1	107	107
INCD007	488775	7476900	311	27-Apr-09	315	-90	0	207	213	6	763	4,580
INCD007	488775	7476900	311	27-Apr-09	315	-90	0	224	225	1	110	110
INCD007	488775	7476900	311	27-Apr-09	315	-90	0	227	233	6	435	2,608
INCD007	488775	7476900	311	27-Apr-09	315	-90	0	236	242	6	523	3,138
INCD007	488775	7476900	311	27-Apr-09	315	-90	0	247	248	1	170	170
INCD007	488775	7476900	311	27-Apr-09	315	-90	0	259	262	3	100	301
INCD007	488775	7476900	311	27-Apr-09	315	-90	0	269	270	1	111	111

Hole *	UTM East	UTM North	RL	Date End	TD	DIP	AZ UTM	From	To	Interval	eU3O8	GTM
INCD007	488775	7476900	311	27-Apr-09	315	-90	0	271	272	1	122	122
INCD007	488775	7476900	311	27-Apr-09	315	-90	0	279	280	1	105	105
INCD007	488775	7476900	311	27-Apr-09	315	-90	0	295	297	2	123	246
INCD007	488775	7476900	311	27-Apr-09	315	-90	0	305	307	2	230	461
INCR001	488711.239	7475504.857	307.504	13-Jan-09	100	-90	0	3	4	2	106	180
INCR001	488711.239	7475504.857	307.504	13-Jan-09	100	-90	0	5	16	10	117	1,177
INCR001	488711.239	7475504.857	307.504	13-Jan-09	100	-90	0	20	22	3	106	303
INCR001	488711.239	7475504.857	307.504	13-Jan-09	100	-90	0	26	32	5	100	521
INCR001	488711.239	7475504.857	307.504	13-Jan-09	100	-90	0	43	45	2	102	198
INCR001	488711.239	7475504.857	307.504	13-Jan-09	100	-90	0	47	49	2	104	208
INCR001	488711.239	7475504.857	307.504	13-Jan-09	100	-90	0	65	66	1	106	154
INCR001	488711.239	7475504.857	307.504	13-Jan-09	100	-90	0	83	93	9	106	995
INCR001	488711.239	7475504.857	307.504	13-Jan-09	100	-90	0	96	97	1	102	112
INCR003	488696.74	7475701.204	309.504	14-Jan-09	100	-90	0	15	19	4	141	592
INCR003	488696.74	7475701.204	309.504	14-Jan-09	100	-90	0	33	36	2	119	293
INCR003	488696.74	7475701.204	309.504	14-Jan-09	100	-90	0	59	60	1	150	157
INCR003	488696.74	7475701.204	309.504	14-Jan-09	100	-90	0	91	98	7	123	849
INCR004	488701.251	7475798.966	310.279	15-Jan-09	100	-90	0	22	23	1	178	187
INCR004	488701.251	7475798.966	310.279	15-Jan-09	100	-90	0	46	47	2	103	180
INCR005	488597.06	7475699.445	307.97	16-Jan-09	100	-90	0	66	67	1	102	107
INCR005	488597.06	7475699.445	307.97	16-Jan-09	100	-90	0	90	91	2	326	522
INCR012	488500.179	7476599.002	308.051	24-Jan-09	100	-90	0	53	54	1	108	129
INCR014	489900.582	7477200.081	323.219	27-Jan-09	100	-90	0	5	6	1	139	146
INCR014	489900.582	7477200.081	323.219	27-Jan-09	100	-90	0	25	29	4	175	623
INCR014	489900.582	7477200.081	323.219	27-Jan-09	100	-90	0	32	38	6	172	1,084
INCR014	489900.582	7477200.081	323.219	27-Jan-09	100	-90	0	42	47	5	104	517
INCR014	489900.582	7477200.081	323.219	27-Jan-09	100	-90	0	49	52	3	124	364
INCR014	489900.582	7477200.081	323.219	27-Jan-09	100	-90	0	71	73	2	103	186

For personal use only

Hole *	UTM East	UTM North	RL	Date End	TD	DIP	AZ UTM	From	To	Interval	eU3O8	GTM
INCR014	489900.582	7477200.081	323.219	27-Jan-09	100	-90	0	90	93	2	107	257
INCR015	490000.814	7477200.075	324.267	28-Jan-09	103	-90	0	28	43	14	213	3,076
INCR015	490000.814	7477200.075	324.267	28-Jan-09	103	-90	0	44	47	3	139	436
INCR015	490000.814	7477200.075	324.267	28-Jan-09	103	-90	0	56	60	4	139	578
INCR015	490000.814	7477200.075	324.267	28-Jan-09	103	-90	0	76	88	12	143	1,726
INCR015	490000.814	7477200.075	324.267	28-Jan-09	103	-90	0	89	96	7	322	2,223
INCR015	490000.814	7477200.075	324.267	28-Jan-09	103	-90	0	99	102	3	107	293
INCR016	490100.477	7477200.256	325.139	29-Jan-09	100	-90	0	57	60	3	106	296
INCR016	490100.477	7477200.256	325.139	29-Jan-09	100	-90	0	87	88	1	313	438
INCR017	488649.996	7476649.871	308.788	30-Jan-09	100	-90	0	11	13	1	131	184
INCR017	488649.996	7476649.871	308.788	30-Jan-09	100	-90	0	21	23	2	243	414
INCR017	488649.996	7476649.871	308.788	30-Jan-09	100	-90	0	25	27	2	415	664
INCR017	488649.996	7476649.871	308.788	30-Jan-09	100	-90	0	54	57	3	182	547
INCR018	488649.002	7476599.847	308.585	3-Feb-09	70	-90	0	15	16	1	492	590
INCR018	488649.002	7476599.847	308.585	3-Feb-09	70	-90	0	31	33	2	150	307
INCR018	488649.002	7476599.847	308.585	3-Feb-09	70	-90	0	58	59	1	242	339
INCR019	488600.178	7476650.019	308.424	30-Jan-09	85	-90	0	14	16	2	138	269
INCR020	488751.982	7476549.429	309.505	2-Feb-09	100	-90	0	69	70	1	172	215
INCR022	488950.011	7476449.981	311.721	4-Feb-09	76	-90	0	3	6	3	148	445
INCR023	489000	7476449.996	312.442	4-Feb-09	49	-90	0	17	20	2	424	214
INCR024	489049.996	7476449.995	312.977	5-Feb-09	106	-90	0	89	100	10	159	1,658
INCR026	489149.996	7476599.999	314.33	7-Feb-09	103	-90	0	32	34	1	112	140
INCR026	489149.996	7476599.999	314.33	7-Feb-09	103	-90	0	50	61	11	257	2,947
INCR026	489149.996	7476599.999	314.33	7-Feb-09	103	-90	0	62	69	7	137	934
INCR026	489149.996	7476599.999	314.33	7-Feb-09	103	-90	0	91	97	5	156	843
INCR026	489149.996	7476599.999	314.33	7-Feb-09	103	-90	0	99	100	1	225	248
INCR027	489249.997	7476600.007	315.585	9-Feb-09	100	-90	0	60	66	6	151	885
INCR027	489249.997	7476600.007	315.585	9-Feb-09	100	-90	0	70	71	1	137	165

Hole *	UTM East	UTM North	RL	Date End	TD	DIP	AZ UTM	From	To	Interval	eU3O8	GTM
INCR027	489249.997	7476600.007	315.585	9-Feb-09	100	-90	0	79	87	8	195	1,472
INCR028	488549.995	7476699.994	307.84	9-Feb-09	100	-90	0	11	13	2	268	631
INCR029	489050.001	7476700	313.244	10-Feb-09	100	-90	0	34	35	2	106	185
INCR029	489050.001	7476700	313.244	10-Feb-09	100	-90	0	39	41	1	101	147
INCR029	489050.001	7476700	313.244	10-Feb-09	100	-90	0	60	68	9	117	1,003
INCR029	489050.001	7476700	313.244	10-Feb-09	100	-90	0	72	80	7	159	1,157
INCR030	489150.009	7476700.008	314.468	11-Feb-09	100	-90	0	33	37	4	239	883
INCR030	489150.009	7476700.008	314.468	11-Feb-09	100	-90	0	46	50	4	105	434
INCR030	489150.009	7476700.008	314.468	11-Feb-09	100	-90	0	51	53	1	137	151
INCR030	489150.009	7476700.008	314.468	11-Feb-09	100	-90	0	54	55	1	102	138
INCR034	490700.014	7476750.012	331.889	16-Feb-09	106	-90	0	73	74	2	101	176
INCR035	490800.007	7476749.993	332.729	17-Feb-09	100	-90	0	44	52	8	124	957
INCR036	489050.022	7476499.991	312.642	18-Feb-09	100	-90	0	34	35	1	153	153
INCR037	489150.007	7476500.013	342.223	18-Feb-09	100	-90	0	15	18	3	160	457
INCR037	489150.007	7476500.013	342.223	18-Feb-09	100	-90	0	71	73	2	109	224
INCR037	489150.007	7476500.013	342.223	18-Feb-09	100	-90	0	75	83	8	150	1,128
INCR041	489499.999	7477749.976	318.012	21-Feb-09	100	-90	0	17	36	19	179	3,444
INCR041	489499.999	7477749.976	318.012	21-Feb-09	100	-90	0	36	42	5	134	698
INCR041	489499.999	7477749.976	318.012	21-Feb-09	100	-90	0	49	57	8	111	857
INCR041	489499.999	7477749.976	318.012	21-Feb-09	100	-90	0	59	63	4	102	418
INCR042	489600.012	7477750.012	319.184	23-Feb-09	130	-90	0	92	96	3	127	408
INCR053	488850.023	7475750.016	310.657	3-Mar-09	84	-90	0	39	40	2	120	204
INCR053	488850.023	7475750.016	310.657	3-Mar-09	84	-90	0	65	66	1	133	166
INCR053	488850.023	7475750.016	310.657	3-Mar-09	84	-90	0	77	80	2	419	921
INCR054	488950.009	7475749.995	310.848	10-Mar-09	121	-90	0	12	15	3	135	438
INCR054	488950.009	7475749.995	310.848	10-Mar-09	121	-90	0	25	30	5	180	926
INCR054	488950.009	7475749.995	310.848	10-Mar-09	121	-90	0	40	50	10	152	1,554
INCR054	488950.009	7475749.995	310.848	10-Mar-09	121	-90	0	53	55	2	139	209

For personal use only

Hole *	UTM East	UTM North	RL	Date End	TD	DIP	AZ UTM	From	To	Interval	eU3O8	GTM
INCR054	488950.009	7475749.995	310.848	10-Mar-09	121	-90	0	57	61	3	114	366
INCR054	488950.009	7475749.995	310.848	10-Mar-09	121	-90	0	65	66	1	189	208
INCR054	488950.009	7475749.995	310.848	10-Mar-09	121	-90	0	96	100	5	110	506
INCR055	488849.991	7475800.009	310.9	11-Mar-09	100	-90	0	25	30	4	244	1,060
INCR057	488950.004	7475850.007	311.708	12-Mar-09	100	-90	0	74	78	4	207	764
INCR057	488950.004	7475850.007	311.708	12-Mar-09	100	-90	0	74	78	4	207	764
INCR101	488957.63	7475796.522	311.581	14-Jan-09	151	-60	270	55	57	3	155	427
INCR101	488957.63	7475796.522	311.581	14-Jan-09	151	-60	270	60	71	10	213	2,228
INCR101	488957.63	7475796.522	311.581	14-Jan-09	151	-60	270	76	81	6	296	1,759
INCR101	488957.63	7475796.522	311.581	14-Jan-09	151	-60	270	108	110	2	109	207
INCR102	488927.379	7475851.879	311.12	15-Jan-09	163	-90	0	30	33	3	114	302
INCR102	488927.379	7475851.879	311.12	15-Jan-09	163	-90	0	144	148	4	185	692
INCR102	488927.379	7475851.879	311.12	15-Jan-09	163	-90	0	150	158	8	203	1,564
INCR103	488950.005	7476650.02	311.982	5-Feb-09	205	-90	0	30	32	2	571	1,028
INCR103	488950.005	7476650.02	311.982	5-Feb-09	205	-90	0	53	60	6	111	707
INCR103	488950.005	7476650.02	311.982	5-Feb-09	205	-90	0	79	87	8	287	2,324
INCR103	488950.005	7476650.02	311.982	5-Feb-09	205	-90	0	92	94	2	490	1,201
INCR103	488950.005	7476650.02	311.982	5-Feb-09	205	-90	0	98	105	7	233	1,735
INCR103	488950.005	7476650.02	311.982	5-Feb-09	205	-90	0	120	123	2	114	279
INCR103	488950.005	7476650.02	311.982	5-Feb-09	205	-90	0	136	138	2	332	713
INCR103	488950.005	7476650.02	311.982	5-Feb-09	205	-90	0	149	157	7	259	1,887
INCR103	488950.005	7476650.02	311.982	5-Feb-09	205	-90	0	164	168	4	279	1,229
INCR103	488950.005	7476650.02	311.982	5-Feb-09	205	-90	0	190	193	2	147	339
INCR103	488950.005	7476650.02	311.982	5-Feb-09	205	-90	0	201	206	5	408	1,916
INCR104	488901.447	7476399.157	312.533	16-Jan-09	199	-90	0	97	100	3	180	512
INCR104	488901.447	7476399.157	312.533	16-Jan-09	199	-90	0	116	118	2	358	663
INCR105	488900.314	7476650.391	311.555	21-Jan-09	199	-90	0	31	32	1	200	290
INCR105	488900.314	7476650.391	311.555	21-Jan-09	199	-90	0	36	45	9	194	1,772

Hole *	UTM East	UTM North	RL	Date End	TD	DIP	AZ UTM	From	To	Interval	eU3O8	GTM
INCR105	488900.314	7476650.391	311.555	21-Jan-09	199	-90	0	45	47	1	129	180
INCR105	488900.314	7476650.391	311.555	21-Jan-09	199	-90	0	58	66	8	189	1,556
INCR105	488900.314	7476650.391	311.555	21-Jan-09	199	-90	0	71	79	8	168	1,340
INCR105	488900.314	7476650.391	311.555	21-Jan-09	199	-90	0	91	97	6	108	641
INCR105	488900.314	7476650.391	311.555	21-Jan-09	199	-90	0	98	106	8	223	1,806
INCR105	488900.314	7476650.391	311.555	21-Jan-09	199	-90	0	107	113	6	172	1,059
INCR105	488900.314	7476650.391	311.555	21-Jan-09	199	-90	0	125	127	3	103	272
INCR105	488900.314	7476650.391	311.555	21-Jan-09	199	-90	0	137	149	12	385	4,715
INCR105	488900.314	7476650.391	311.555	21-Jan-09	199	-90	0	149	157	7	175	1,271
INCR105	488900.314	7476650.391	311.555	21-Jan-09	199	-90	0	158	163	4	143	593
INCR105	488900.314	7476650.391	311.555	21-Jan-09	199	-90	0	167	176	9	161	1,473
INCR105	488900.314	7476650.391	311.555	21-Jan-09	199	-90	0	177	181	3	154	523
INCR105	488900.314	7476650.391	311.555	21-Jan-09	199	-90	0	183	196	13	1,576	20,018
INCR106	488699.99	7476649.943	309.157	23-Jan-09	199	-90	0	23	25	2	384	615
INCR106	488699.99	7476649.943	309.157	23-Jan-09	199	-90	0	28	31	4	308	1,123
INCR106	488699.99	7476649.943	309.157	23-Jan-09	199	-90	0	36	47	12	1,089	12,681
INCR106	488699.99	7476649.943	309.157	23-Jan-09	199	-90	0	55	64	8	460	3,818
INCR106	488699.99	7476649.943	309.157	23-Jan-09	199	-90	0	77	106	29	283	8,314
INCR106	488699.99	7476649.943	309.157	23-Jan-09	199	-90	0	137	138	1	112	140
INCR107	488901.045	7476549.436	311.769	26-Jan-09	199	-90	0	38	49	12	471	5,623
INCR107	488901.045	7476549.436	311.769	26-Jan-09	199	-90	0	54	58	4	253	1,038
INCR107	488901.045	7476549.436	311.769	26-Jan-09	199	-90	0	62	66	4	270	1,028
INCR107	488901.045	7476549.436	311.769	26-Jan-09	199	-90	0	71	76	5	143	685
INCR107	488901.045	7476549.436	311.769	26-Jan-09	199	-90	0	80	82	1	162	235
INCR107	488901.045	7476549.436	311.769	26-Jan-09	199	-90	0	89	93	4	252	982
INCR107	488901.045	7476549.436	311.769	26-Jan-09	199	-90	0	105	110	5	132	602
INCR107	488901.045	7476549.436	311.769	26-Jan-09	199	-90	0	117	123	6	170	986
INCR107	488901.045	7476549.436	311.769	26-Jan-09	199	-90	0	136	141	5	412	1,978

Hole *	UTM East	UTM North	RL	Date End	TD	DIP	AZ UTM	From	To	Interval	eU3O8	GTM
INCR108	488800.639	7476548.8	310.29	28-Jan-09	199	-90	0	50	66	16	1,056	16,629
INCR108	488800.639	7476548.8	310.29	28-Jan-09	199	-90	0	69	78	9	187	1,681
INCR108	488800.639	7476548.8	310.29	28-Jan-09	199	-90	0	81	83	2	138	317
INCR108	488800.639	7476548.8	310.29	28-Jan-09	199	-90	0	93	96	3	106	319
INCR108	488800.639	7476548.8	310.29	28-Jan-09	199	-90	0	115	116	1	132	132
INCR108	488800.639	7476548.8	310.29	28-Jan-09	199	-90	0	128	134	5	300	1,621
INCR108	488800.639	7476548.8	310.29	28-Jan-09	199	-90	0	139	141	2	154	269
INCR108	488800.639	7476548.8	310.29	28-Jan-09	199	-90	0	143	148	5	638	3,318
INCR109	488700.416	7476548.653	309.375	30-Jan-09	199	-90	0	26	34	8	1,130	8,647
INCR109	488700.416	7476548.653	309.375	30-Jan-09	199	-90	0	137	140	3	111	312
INCR110	488750.24	7476650.026	309.969	3-Feb-09	183	-90	0	22	35	13	139	1,843
INCR110	488750.24	7476650.026	309.969	3-Feb-09	183	-90	0	38	44	6	295	1,710
INCR110	488750.24	7476650.026	309.969	3-Feb-09	183	-90	0	47	50	2	120	270
INCR110	488750.24	7476650.026	309.969	3-Feb-09	183	-90	0	53	58	5	234	1,172
INCR110	488750.24	7476650.026	309.969	3-Feb-09	183	-90	0	61	63	2	165	296
INCR110	488750.24	7476650.026	309.969	3-Feb-09	183	-90	0	72	75	3	219	636
INCR110	488750.24	7476650.026	309.969	3-Feb-09	183	-90	0	120	122	2	114	212
INCR110	488750.24	7476650.026	309.969	3-Feb-09	183	-90	0	147	148	1	130	130
INCR110	488750.24	7476650.026	309.969	3-Feb-09	183	-90	0	153	171	18	135	2,390
INCR111	488850.269	7476650.354	310.883	3-Feb-09	199	-90	0	24	31	7	214	1,521
INCR111	488850.269	7476650.354	310.883	3-Feb-09	199	-90	0	35	37	2	107	208
INCR111	488850.269	7476650.354	310.883	3-Feb-09	199	-90	0	40	48	8	106	860
INCR111	488850.269	7476650.354	310.883	3-Feb-09	199	-90	0	49	53	4	151	641
INCR111	488850.269	7476650.354	310.883	3-Feb-09	199	-90	0	55	64	9	153	1,356
INCR111	488850.269	7476650.354	310.883	3-Feb-09	199	-90	0	65	73	8	208	1,768
INCR111	488850.269	7476650.354	310.883	3-Feb-09	199	-90	0	75	86	11	229	2,463
INCR111	488850.269	7476650.354	310.883	3-Feb-09	199	-90	0	87	98	11	509	5,493
INCR111	488850.269	7476650.354	310.883	3-Feb-09	199	-90	0	111	112	2	116	198

Hole *	UTM East	UTM North	RL	Date End	TD	DIP	AZ UTM	From	To	Interval	eU3O8	GTM
INCR111	488850.269	7476650.354	310.883	3-Feb-09	199	-90	0	115	118	3	159	438
INCR111	488850.269	7476650.354	310.883	3-Feb-09	199	-90	0	120	134	13	141	1,845
INCR111	488850.269	7476650.354	310.883	3-Feb-09	199	-90	0	135	137	2	113	249
INCR111	488850.269	7476650.354	310.883	3-Feb-09	199	-90	0	150	164	14	192	2,775
INCR112	489000.027	7476650.002	312.562	7-Feb-09	205	-90	0	39	44	5	107	566
INCR112	489000.027	7476650.002	312.562	7-Feb-09	205	-90	0	44	51	7	149	1,045
INCR112	489000.027	7476650.002	312.562	7-Feb-09	205	-90	0	58	61	3	121	352
INCR112	489000.027	7476650.002	312.562	7-Feb-09	205	-90	0	67	69	2	154	255
INCR112	489000.027	7476650.002	312.562	7-Feb-09	205	-90	0	82	83	1	105	110
INCR112	489000.027	7476650.002	312.562	7-Feb-09	205	-90	0	84	96	12	171	2,022
INCR112	489000.027	7476650.002	312.562	7-Feb-09	205	-90	0	97	100	3	111	334
INCR112	489000.027	7476650.002	312.562	7-Feb-09	205	-90	0	102	105	3	122	373
INCR112	489000.027	7476650.002	312.562	7-Feb-09	205	-90	0	117	123	6	360	2,121
INCR112	489000.027	7476650.002	312.562	7-Feb-09	205	-90	0	138	142	4	256	1,141
INCR112	489000.027	7476650.002	312.562	7-Feb-09	205	-90	0	164	178	13	508	6,704
INCR112	489000.027	7476650.002	312.562	7-Feb-09	205	-90	0	183	184	1	335	369
INCR113	488749.998	7476599.999	309.711	9-Feb-09	183	-90	0	24	26	3	229	630
INCR113	488749.998	7476599.999	309.711	9-Feb-09	183	-90	0	30	34	5	461	2,189
INCR113	488749.998	7476599.999	309.711	9-Feb-09	183	-90	0	39	43	4	185	702
INCR113	488749.998	7476599.999	309.711	9-Feb-09	183	-90	0	48	49	1	1,497	1,946
INCR113	488749.998	7476599.999	309.711	9-Feb-09	183	-90	0	57	67	10	200	1,963
INCR113	488749.998	7476599.999	309.711	9-Feb-09	183	-90	0	98	99	2	257	436
INCR113	488749.998	7476599.999	309.711	9-Feb-09	183	-90	0	145	154	9	215	1,993
INCR114	488804.136	7476592.972	310.527	9-Feb-09	199	-90	0	22	32	10	230	2,410
INCR114	488804.136	7476592.972	310.527	9-Feb-09	199	-90	0	34	35	1	169	186
INCR114	488804.136	7476592.972	310.527	9-Feb-09	199	-90	0	37	45	8	348	2,769
INCR114	488804.136	7476592.972	310.527	9-Feb-09	199	-90	0	78	80	1	118	153
INCR114	488804.136	7476592.972	310.527	9-Feb-09	199	-90	0	100	101	1	148	170

Hole *	UTM East	UTM North	RL	Date End	TD	DIP	AZ UTM	From	To	Interval	eU3O8	GTM
INCR114	488804.136	7476592.972	310.527	9-Feb-09	199	-90	0	106	115	9	172	1,543
INCR114	488804.136	7476592.972	310.527	9-Feb-09	199	-90	0	117	119	2	110	270
INCR114	488804.136	7476592.972	310.527	9-Feb-09	199	-90	0	124	126	2	871	1,829
INCR114	488804.136	7476592.972	310.527	9-Feb-09	199	-90	0	130	134	4	429	1,717
INCR114	488804.136	7476592.972	310.527	9-Feb-09	199	-90	0	164	166	1	299	389
INCR114	488804.136	7476592.972	310.527	9-Feb-09	199	-90	0	169	173	4	487	1,947
INCR114	488804.136	7476592.972	310.527	9-Feb-09	199	-90	0	185	190	5	279	1,407
INCR115	488904.548	7476605.923	311.598	13-Feb-09	199	-90	0	14	28	14	213	2,911
INCR115	488904.548	7476605.923	311.598	13-Feb-09	199	-90	0	28	30	2	169	363
INCR115	488904.548	7476605.923	311.598	13-Feb-09	199	-90	0	33	39	6	158	887
INCR115	488904.548	7476605.923	311.598	13-Feb-09	199	-90	0	61	63	3	299	777
INCR115	488904.548	7476605.923	311.598	13-Feb-09	199	-90	0	83	86	3	124	360
INCR115	488904.548	7476605.923	311.598	13-Feb-09	199	-90	0	89	91	2	321	754
INCR115	488904.548	7476605.923	311.598	13-Feb-09	199	-90	0	94	96	2	726	1,596
INCR115	488904.548	7476605.923	311.598	13-Feb-09	199	-90	0	110	118	8	147	1,195
INCR115	488904.548	7476605.923	311.598	13-Feb-09	199	-90	0	125	129	4	268	979
INCR115	488904.548	7476605.923	311.598	13-Feb-09	199	-90	0	132	133	2	115	173
INCR115	488904.548	7476605.923	311.598	13-Feb-09	199	-90	0	135	141	6	270	1,540
INCR115	488904.548	7476605.923	311.598	13-Feb-09	199	-90	0	154	163	9	608	5,199
INCR115	488904.548	7476605.923	311.598	13-Feb-09	199	-90	0	167	181	15	411	6,000
INCR116	488949.84	7476599.94	312.226	16-Feb-09	199	-90	0	46	48	3	100	265
INCR116	488949.84	7476599.94	312.226	16-Feb-09	199	-90	0	51	56	5	123	657
INCR116	488949.84	7476599.94	312.226	16-Feb-09	199	-90	0	65	69	4	215	861
INCR116	488949.84	7476599.94	312.226	16-Feb-09	199	-90	0	86	89	4	329	1,217
INCR116	488949.84	7476599.94	312.226	16-Feb-09	199	-90	0	95	99	4	280	1,162
INCR116	488949.84	7476599.94	312.226	16-Feb-09	199	-90	0	107	115	8	396	3,349
INCR116	488949.84	7476599.94	312.226	16-Feb-09	199	-90	0	125	127	2	130	279
INCR116	488949.84	7476599.94	312.226	16-Feb-09	199	-90	0	135	136	1	504	504

Hole *	UTM East	UTM North	RL	Date End	TD	DIP	AZ UTM	From	To	Interval	eU3O8	GTM
INCR116	488949.84	7476599.94	312.226	16-Feb-09	199	-90	0	175	184	9	304	2,768
INCR116	488949.84	7476599.94	312.226	16-Feb-09	199	-90	0	184	189	5	147	747
INCR117	489005.011	7476605.121	312.646	17-Feb-09	199	-90	0	36	38	2	166	374
INCR117	489005.011	7476605.121	312.646	17-Feb-09	199	-90	0	46	48	2	145	269
INCR117	489005.011	7476605.121	312.646	17-Feb-09	199	-90	0	65	70	5	110	556
INCR117	489005.011	7476605.121	312.646	17-Feb-09	199	-90	0	71	73	2	131	223
INCR117	489005.011	7476605.121	312.646	17-Feb-09	199	-90	0	82	90	7	712	5,307
INCR117	489005.011	7476605.121	312.646	17-Feb-09	199	-90	0	92	97	5	385	2,002
INCR117	489005.011	7476605.121	312.646	17-Feb-09	199	-90	0	107	112	4	494	2,101
INCR117	489005.011	7476605.121	312.646	17-Feb-09	199	-90	0	116	122	5	257	1,403
INCR117	489005.011	7476605.121	312.646	17-Feb-09	199	-90	0	135	136	1	113	136
INCR118	488602.746	7476804.53	309.608	18-Feb-09	199	-90	0	32	38	6	241	1,531
INCR118	488602.746	7476804.53	309.608	18-Feb-09	199	-90	0	59	60	1	556	556
INCR118	488602.746	7476804.53	309.608	18-Feb-09	199	-90	0	68	82	14	422	5,821
INCR118	488602.746	7476804.53	309.608	18-Feb-09	199	-90	0	84	87	2	351	877
INCR118	488602.746	7476804.53	309.608	18-Feb-09	199	-90	0	92	94	3	104	277
INCR118	488602.746	7476804.53	309.608	18-Feb-09	199	-90	0	95	104	9	129	1,132
INCR118	488602.746	7476804.53	309.608	18-Feb-09	199	-90	0	160	163	3	120	306
INCR119	488609.788	7476708.05	308.377	11-Mar-09	199	-90	0	46	55	9	337	3,066
INCR119	488609.788	7476708.05	308.377	11-Mar-09	199	-90	0	56	59	4	287	1,104
INCR119	488609.788	7476708.05	308.377	11-Mar-09	199	-90	0	143	150	7	188	1,267
INCR120	488705.351	7476704.243	309.604	20-Feb-09	199	-90	0	20	23	4	147	544
INCR120	488705.351	7476704.243	309.604	20-Feb-09	199	-90	0	27	39	12	235	2,840
INCR120	488705.351	7476704.243	309.604	20-Feb-09	199	-90	0	42	45	3	104	327
INCR120	488705.351	7476704.243	309.604	20-Feb-09	199	-90	0	45	47	2	107	192
INCR120	488705.351	7476704.243	309.604	20-Feb-09	199	-90	0	48	50	2	117	228
INCR120	488705.351	7476704.243	309.604	20-Feb-09	199	-90	0	54	55	1	222	255
INCR120	488705.351	7476704.243	309.604	20-Feb-09	199	-90	0	61	62	2	153	229

For personal use only

Hole *	UTM East	UTM North	RL	Date End	TD	DIP	AZ UTM	From	To	Interval	eU3O8	GTM
INCR120	488705.351	7476704.243	309.604	20-Feb-09	199	-90	0	77	80	4	187	702
INCR120	488705.351	7476704.243	309.604	20-Feb-09	199	-90	0	92	108	16	558	8,704
INCR120	488705.351	7476704.243	309.604	20-Feb-09	199	-90	0	123	124	2	658	987
INCR120	488705.351	7476704.243	309.604	20-Feb-09	199	-90	0	137	139	2	3,637	6,547
INCR120	488705.351	7476704.243	309.604	20-Feb-09	199	-90	0	157	159	2	335	636
INCR120	488705.351	7476704.243	309.604	20-Feb-09	199	-90	0	162	172	10	386	3,787
INCR120	488705.351	7476704.243	309.604	20-Feb-09	199	-90	0	172	174	2	105	214
INCR120	488705.351	7476704.243	309.604	20-Feb-09	199	-90	0	179	180	1	117	123
INCR121	488750.005	7476700.011	309.849	16-Mar-09	205	-90	0	57	66	9	348	3,131
INCR121	488750.005	7476700.011	309.849	16-Mar-09	205	-90	0	66	75	9	660	6,171
INCR121	488750.005	7476700.011	309.849	16-Mar-09	205	-90	0	77	79	2	364	819
INCR121	488750.005	7476700.011	309.849	16-Mar-09	205	-90	0	83	93	10	615	6,364
INCR121	488750.005	7476700.011	309.849	16-Mar-09	205	-90	0	127	133	6	139	795
INCR121	488750.005	7476700.011	309.849	16-Mar-09	205	-90	0	137	140	3	103	300
INCR121	488750.005	7476700.011	309.849	16-Mar-09	205	-90	0	142	144	1	109	158
INCR121	488750.005	7476700.011	309.849	16-Mar-09	205	-90	0	149	151	2	103	154
INCR121	488750.005	7476700.011	309.849	16-Mar-09	205	-90	0	156	158	2	333	649
INCR121	488750.005	7476700.011	309.849	16-Mar-09	205	-90	0	166	168	2	112	202
INCR121	488750.005	7476700.011	309.849	16-Mar-09	205	-90	0	168	181	12	242	2,974
INCR121	488750.005	7476700.011	309.849	16-Mar-09	205	-90	0	191	194	4	119	429
INCR121	488750.005	7476700.011	309.849	16-Mar-09	205	-90	0	197	202	5	173	871
INCR122	488804.111	7476705.289	310.581	18-Mar-09	205	-90	0	36	41	5	140	702
INCR122	488804.111	7476705.289	310.581	18-Mar-09	205	-90	0	68	80	12	627	7,403
INCR122	488804.111	7476705.289	310.581	18-Mar-09	205	-90	0	86	91	5	209	1,054
INCR122	488804.111	7476705.289	310.581	18-Mar-09	205	-90	0	93	95	1	121	163
INCR122	488804.111	7476705.289	310.581	18-Mar-09	205	-90	0	99	104	6	181	997
INCR122	488804.111	7476705.289	310.581	18-Mar-09	205	-90	0	134	137	3	235	729
INCR122	488804.111	7476705.289	310.581	18-Mar-09	205	-90	0	169	172	3	369	1,145

Hole *	UTM East	UTM North	RL	Date End	TD	DIP	AZ UTM	From	To	Interval	eU3O8	GTM
INCR122	488804.111	7476705.289	310.581	18-Mar-09	205	-90	0	201	202	2	123	222
INCR127	488849.993	7476549.998	310.849	21-Feb-09	187	-90	0	27	32	4	148	643
INCR127	488849.993	7476549.998	310.849	21-Feb-09	187	-90	0	34	43	10	214	2,052
INCR127	488849.993	7476549.998	310.849	21-Feb-09	187	-90	0	45	56	10	537	5,559
INCR127	488849.993	7476549.998	310.849	21-Feb-09	187	-90	0	56	64	8	175	1,349
INCR127	488849.993	7476549.998	310.849	21-Feb-09	187	-90	0	75	77	2	133	273
INCR127	488849.993	7476549.998	310.849	21-Feb-09	187	-90	0	80	85	5	153	786
INCR127	488849.993	7476549.998	310.849	21-Feb-09	187	-90	0	87	90	2	216	507
INCR127	488849.993	7476549.998	310.849	21-Feb-09	187	-90	0	102	103	1	114	126
INCR127	488849.993	7476549.998	310.849	21-Feb-09	187	-90	0	114	115	2	242	363
INCR127	488849.993	7476549.998	310.849	21-Feb-09	187	-90	0	134	139	4	587	2,641
INCR127	488849.993	7476549.998	310.849	21-Feb-09	187	-90	0	142	149	7	226	1,593
INCR128	488949.998	7476550.002	312.03	24-Feb-09	199	-90	0	30	50	20	479	9,362
INCR128	488949.998	7476550.002	312.03	24-Feb-09	199	-90	0	51	62	11	634	6,876
INCR128	488949.998	7476550.002	312.03	24-Feb-09	199	-90	0	72	74	2	456	1,094
INCR128	488949.998	7476550.002	312.03	24-Feb-09	199	-90	0	78	85	6	317	1,967
INCR128	488949.998	7476550.002	312.03	24-Feb-09	199	-90	0	112	114	2	804	1,970
INCR128	488949.998	7476550.002	312.03	24-Feb-09	199	-90	0	138	141	3	206	619
INCR129	488899.975	7476675.005	311.801	25-Mar-09	264	-90	0	30	36	5	131	695
INCR129	488899.975	7476675.005	311.801	25-Mar-09	264	-90	0	42	44	2	181	353
INCR129	488899.975	7476675.005	311.801	25-Mar-09	264	-90	0	64	69	5	109	524
INCR129	488899.975	7476675.005	311.801	25-Mar-09	264	-90	0	77	84	7	147	1,079
INCR129	488899.975	7476675.005	311.801	25-Mar-09	264	-90	0	93	97	4	160	666
INCR129	488899.975	7476675.005	311.801	25-Mar-09	264	-90	0	109	119	10	145	1,469
INCR129	488899.975	7476675.005	311.801	25-Mar-09	264	-90	0	120	128	9	169	1,463
INCR129	488899.975	7476675.005	311.801	25-Mar-09	264	-90	0	130	135	4	317	1,378
INCR129	488899.975	7476675.005	311.801	25-Mar-09	264	-90	0	160	167	7	191	1,349
INCR129	488899.975	7476675.005	311.801	25-Mar-09	264	-90	0	186	194	8	125	985

Hole *	UTM East	UTM North	RL	Date End	TD	DIP	AZ UTM	From	To	Interval	eU3O8	GTM
INCR129	488899.975	7476675.005	311.801	25-Mar-09	264	-90	0	197	199	2	274	547
INCR129	488899.975	7476675.005	311.801	25-Mar-09	264	-90	0	208	214	6	1,073	6,923
INCR129	488899.975	7476675.005	311.801	25-Mar-09	264	-90	0	222	225	2	1,066	2,398
INCR129	488899.975	7476675.005	311.801	25-Mar-09	264	-90	0	227	232	5	549	2,884
INCR129	488899.975	7476675.005	311.801	25-Mar-09	264	-90	0	235	240	6	686	3,840
INCR130	488900.001	7476624.973	311.544	27-Feb-09	205	-90	0	16	18	1	151	151
INCR130	488900.001	7476624.973	311.544	27-Feb-09	205	-90	0	20	28	8	206	1,698
INCR130	488900.001	7476624.973	311.544	27-Feb-09	205	-90	0	30	33	3	150	426
INCR130	488900.001	7476624.973	311.544	27-Feb-09	205	-90	0	46	47	1	104	110
INCR130	488900.001	7476624.973	311.544	27-Feb-09	205	-90	0	58	64	6	102	621
INCR130	488900.001	7476624.973	311.544	27-Feb-09	205	-90	0	67	74	7	447	3,244
INCR130	488900.001	7476624.973	311.544	27-Feb-09	205	-90	0	75	78	3	1,029	3,035
INCR130	488900.001	7476624.973	311.544	27-Feb-09	205	-90	0	82	88	5	159	842
INCR130	488900.001	7476624.973	311.544	27-Feb-09	205	-90	0	93	94	1	107	117
INCR130	488900.001	7476624.973	311.544	27-Feb-09	205	-90	0	120	121	1	427	555
INCR130	488900.001	7476624.973	311.544	27-Feb-09	205	-90	0	124	131	7	329	2,319
INCR130	488900.001	7476624.973	311.544	27-Feb-09	205	-90	0	140	142	2	109	229
INCR130	488900.001	7476624.973	311.544	27-Feb-09	205	-90	0	155	157	2	166	291
INCR130	488900.001	7476624.973	311.544	27-Feb-09	205	-90	0	164	177	13	395	5,260
INCR130	488900.001	7476624.973	311.544	27-Feb-09	205	-90	0	178	180	1	253	367
INCR130	488900.001	7476624.973	311.544	27-Feb-09	205	-90	0	187	190	3	795	2,346
INCR130	488900.001	7476624.973	311.544	27-Feb-09	205	-90	0	196	198	3	127	368
INCR131	488900.005	7476575.004	311.737	3-Mar-09	153	-90	0	26	28	3	120	305
INCR131	488900.005	7476575.004	311.737	3-Mar-09	153	-90	0	55	69	14	375	5,347
INCR131	488900.005	7476575.004	311.737	3-Mar-09	153	-90	0	76	87	11	453	5,190
INCR131	488900.005	7476575.004	311.737	3-Mar-09	153	-90	0	97	98	2	136	205
INCR131	488900.005	7476575.004	311.737	3-Mar-09	153	-90	0	100	101	2	201	341
INCR131	488900.005	7476575.004	311.737	3-Mar-09	153	-90	0	104	106	2	256	575

Hole *	UTM East	UTM North	RL	Date End	TD	DIP	AZ UTM	From	To	Interval	eU3O8	GTM
INCR131	488900.005	7476575.004	311.737	3-Mar-09	153	-90	0	119	125	6	407	2,362
INCR131	488900.005	7476575.004	311.737	3-Mar-09	153	-90	0	129	131	2	207	466
INCR131	488900.005	7476575.004	311.737	3-Mar-09	153	-90	0	139	144	5	568	2,869
INCR132	488899.987	7476524.988	311.637	5-Mar-09	146	-90	0	24	29	5	530	2,678
INCR132	488899.987	7476524.988	311.637	5-Mar-09	146	-90	0	34	37	3	261	822
INCR132	488899.987	7476524.988	311.637	5-Mar-09	146	-90	0	39	43	4	442	1,568
INCR132	488899.987	7476524.988	311.637	5-Mar-09	146	-90	0	45	50	5	723	3,508
INCR132	488899.987	7476524.988	311.637	5-Mar-09	146	-90	0	52	59	6	738	4,797
INCR132	488899.987	7476524.988	311.637	5-Mar-09	146	-90	0	61	66	5	197	1,005
INCR132	488899.987	7476524.988	311.637	5-Mar-09	146	-90	0	70	87	17	392	6,819
INCR132	488899.987	7476524.988	311.637	5-Mar-09	146	-90	0	95	100	6	144	813
INCR132	488899.987	7476524.988	311.637	5-Mar-09	146	-90	0	106	108	2	166	399
INCR132	488899.987	7476524.988	311.637	5-Mar-09	146	-90	0	114	126	12	612	7,066
INCR138	488602.316	7477003.066	308.671	23-Mar-09	205	-90	0	8	10	2	106	206
INCR138	488602.316	7477003.066	308.671	23-Mar-09	205	-90	0	13	16	3	120	390
INCR138	488602.316	7477003.066	308.671	23-Mar-09	205	-90	0	17	20	2	112	247
INCR138	488602.316	7477003.066	308.671	23-Mar-09	205	-90	0	25	26	1	155	171
INCR138	488602.316	7477003.066	308.671	23-Mar-09	205	-90	0	38	46	8	138	1,100
INCR138	488602.316	7477003.066	308.671	23-Mar-09	205	-90	0	95	97	1	115	166
INCR138	488602.316	7477003.066	308.671	23-Mar-09	205	-90	0	137	144	6	157	1,019
INCR138	488602.316	7477003.066	308.671	23-Mar-09	205	-90	0	144	147	3	124	371
INCR138	488602.316	7477003.066	308.671	23-Mar-09	205	-90	0	170	181	11	157	1,713
INCR138	488602.316	7477003.066	308.671	23-Mar-09	205	-90	0	183	186	3	179	528
INCR138	488602.316	7477003.066	308.671	23-Mar-09	205	-90	0	188	193	4	142	612
INCR139	488702.037	7476903.95	309.544	25-Mar-09	229	-90	0	28	34	6	335	2,025
INCR139	488702.037	7476903.95	309.544	25-Mar-09	229	-90	0	40	41	1	715	965
INCR139	488702.037	7476903.95	309.544	25-Mar-09	229	-90	0	57	63	6	122	768
INCR139	488702.037	7476903.95	309.544	25-Mar-09	229	-90	0	64	75	11	210	2,293

Hole *	UTM East	UTM North	RL	Date End	TD	DIP	AZ UTM	From	To	Interval	eU3O8	GTM
INCR139	488702.037	7476903.95	309.544	25-Mar-09	229	-90	0	79	82	3	112	319
INCR139	488702.037	7476903.95	309.544	25-Mar-09	229	-90	0	92	99	8	106	820
INCR139	488702.037	7476903.95	309.544	25-Mar-09	229	-90	0	102	107	5	139	699
INCR139	488702.037	7476903.95	309.544	25-Mar-09	229	-90	0	119	124	5	113	564
INCR139	488702.037	7476903.95	309.544	25-Mar-09	229	-90	0	133	135	2	111	183
INCR139	488702.037	7476903.95	309.544	25-Mar-09	229	-90	0	177	182	5	134	663
INCR139	488702.037	7476903.95	309.544	25-Mar-09	229	-90	0	207	225	19	1,968	36,502
INCR140	488702.475	7476804.414	309.801	27-Mar-09	187	-90	0	35	43	8	122	990
INCR140	488702.475	7476804.414	309.801	27-Mar-09	187	-90	0	89	90	1	190	218
INCR140	488702.475	7476804.414	309.801	27-Mar-09	187	-90	0	132	133	1	119	136
INCR140	488702.475	7476804.414	309.801	27-Mar-09	187	-90	0	137	141	4	1,802	7,206
INCR140	488702.475	7476804.414	309.801	27-Mar-09	187	-90	0	168	171	3	866	2,986
INCR140	488702.475	7476804.414	309.801	27-Mar-09	187	-90	0	175	185	10	487	5,043
INCR141	488724.995	7476750.004	309.899	24-Mar-09	260	-60	180	33	43	10	194	1,939
INCR141	488724.995	7476750.004	309.899	24-Mar-09	260	-60	180	43	46	2	106	244
INCR141	488724.995	7476750.004	309.899	24-Mar-09	260	-60	180	56	58	1	103	149
INCR141	488724.995	7476750.004	309.899	24-Mar-09	260	-60	180	64	69	5	120	564
INCR141	488724.995	7476750.004	309.899	24-Mar-09	260	-60	180	72	77	5	1,133	6,176
INCR141	488724.995	7476750.004	309.899	24-Mar-09	260	-60	180	81	82	1	155	155
INCR141	488724.995	7476750.004	309.899	24-Mar-09	260	-60	180	94	95	1	123	123
INCR141	488724.995	7476750.004	309.899	24-Mar-09	260	-60	180	115	120	5	149	722
INCR141	488724.995	7476750.004	309.899	24-Mar-09	260	-60	180	129	145	16	201	3,231
INCR141	488724.995	7476750.004	309.899	24-Mar-09	260	-60	180	152	172	20	373	7,282
INCR142	488775.01	7476749.988	310.518	26-Mar-09	260	-60	180	38	40	2	124	242
INCR142	488775.01	7476749.988	310.518	26-Mar-09	260	-60	180	58	67	9	109	1,002
INCR142	488775.01	7476749.988	310.518	26-Mar-09	260	-60	180	69	74	5	139	631
INCR142	488775.01	7476749.988	310.518	26-Mar-09	260	-60	180	76	81	6	201	1,145
INCR142	488775.01	7476749.988	310.518	26-Mar-09	260	-60	180	84	86	2	104	251

For personal use only

Hole *	UTM East	UTM North	RL	Date End	TD	DIP	AZ UTM	From	To	Interval	eU3O8	GTM
INCR142	488775.01	7476749.988	310.518	26-Mar-09	260	-60	180	91	100	9	887	7,580
INCR142	488775.01	7476749.988	310.518	26-Mar-09	260	-60	180	104	106	2	277	512
INCR142	488775.01	7476749.988	310.518	26-Mar-09	260	-60	180	112	113	1	184	184
INCR142	488775.01	7476749.988	310.518	26-Mar-09	260	-60	180	122	127	5	233	1,201
INCR142	488775.01	7476749.988	310.518	26-Mar-09	260	-60	180	133	139	6	182	1,009
INCR142	488775.01	7476749.988	310.518	26-Mar-09	260	-60	180	146	148	3	110	298
INCR142	488775.01	7476749.988	310.518	26-Mar-09	260	-60	180	159	169	11	217	2,347
INCR142	488775.01	7476749.988	310.518	26-Mar-09	260	-60	180	192	193	1	103	134
INCR142	488775.01	7476749.988	310.518	26-Mar-09	260	-60	180	198	202	4	375	1,574
INCR142	488775.01	7476749.988	310.518	26-Mar-09	260	-60	180	209	210	1	106	133
INCR142	488775.01	7476749.988	310.518	26-Mar-09	260	-60	180	226	232	6	138	803
INCR143	489049.989	7476650.009	313.073	27-Mar-09	240	-90	0	32	38	6	110	657
INCR143	489049.989	7476650.009	313.073	27-Mar-09	240	-90	0	43	58	15	142	2,116
INCR143	489049.989	7476650.009	313.073	27-Mar-09	240	-90	0	58	73	15	150	2,279
INCR143	489049.989	7476650.009	313.073	27-Mar-09	240	-90	0	95	98	3	128	398
INCR143	489049.989	7476650.009	313.073	27-Mar-09	240	-90	0	105	107	2	602	1,476
INCR143	489049.989	7476650.009	313.073	27-Mar-09	240	-90	0	124	125	2	293	527
INCR143	489049.989	7476650.009	313.073	27-Mar-09	240	-90	0	161	167	6	204	1,215
INCR143	489049.989	7476650.009	313.073	27-Mar-09	240	-90	0	172	173	1	145	159
INCR144	488760.004	7476625	310.009	30-Mar-09	254	-60	0	24	34	10	323	3,325
INCR144	488760.004	7476625	310.009	30-Mar-09	254	-60	0	37	54	18	565	9,997
INCR144	488760.004	7476625	310.009	30-Mar-09	254	-60	0	56	58	2	112	184
INCR144	488760.004	7476625	310.009	30-Mar-09	254	-60	0	58	62	3	124	426
INCR144	488760.004	7476625	310.009	30-Mar-09	254	-60	0	74	81	7	174	1,191
INCR144	488760.004	7476625	310.009	30-Mar-09	254	-60	0	83	84	1	128	141
INCR144	488760.004	7476625	310.009	30-Mar-09	254	-60	0	86	95	9	133	1,211
INCR144	488760.004	7476625	310.009	30-Mar-09	254	-60	0	127	134	8	294	2,249
INCR144	488760.004	7476625	310.009	30-Mar-09	254	-60	0	136	144	8	221	1,670

Hole *	UTM East	UTM North	RL	Date End	TD	DIP	AZ UTM	From	To	Interval	eU3O8	GTM
INCR144	488760.004	7476625	310.009	30-Mar-09	254	-60	0	168	179	11	153	1,625
INCR144	488760.004	7476625	310.009	30-Mar-09	254	-60	0	208	224	17	720	11,960
INCR144	488760.004	7476625	310.009	30-Mar-09	254	-60	0	240	248	8	112	857
INCR145	488910.002	7476500.001	311.211	1-Apr-09	294	-60	0	31	42	11	356	3,912
INCR145	488910.002	7476500.001	311.211	1-Apr-09	294	-60	0	46	60	14	170	2,342
INCR145	488910.002	7476500.001	311.211	1-Apr-09	294	-60	0	74	94	20	745	15,198
INCR145	488910.002	7476500.001	311.211	1-Apr-09	294	-60	0	105	107	2	442	995
INCR145	488910.002	7476500.001	311.211	1-Apr-09	294	-60	0	111	113	2	229	574
INCR145	488910.002	7476500.001	311.211	1-Apr-09	294	-60	0	122	125	3	112	359
INCR145	488910.002	7476500.001	311.211	1-Apr-09	294	-60	0	133	135	2	118	254
INCR145	488910.002	7476500.001	311.211	1-Apr-09	294	-60	0	142	153	11	239	2,629
INCR145	488910.002	7476500.001	311.211	1-Apr-09	294	-60	0	207	213	6	153	989
INCR145	488910.002	7476500.001	311.211	1-Apr-09	294	-60	0	228	234	7	118	788
INCR145	488910.002	7476500.001	311.211	1-Apr-09	294	-60	0	234	237	3	105	279
INCR145	488910.002	7476500.001	311.211	1-Apr-09	294	-60	0	265	268	3	452	1,380
INCR145	488910.002	7476500.001	311.211	1-Apr-09	294	-60	0	275	276	1	280	392
INCR147	488803.889	7476904.112	310.818	2-Apr-09	249	-90	0	21	22	1	166	166
INCR147	488803.889	7476904.112	310.818	2-Apr-09	249	-90	0	53	54	1	104	104
INCR147	488803.889	7476904.112	310.818	2-Apr-09	249	-90	0	145	147	2	437	873
INCR147	488803.889	7476904.112	310.818	2-Apr-09	249	-90	0	172	177	5	1,023	5,114
INCR147	488803.889	7476904.112	310.818	2-Apr-09	249	-90	0	180	181	1	128	128
INCR147	488803.889	7476904.112	310.818	2-Apr-09	249	-90	0	188	196	8	143	1,147
INCR147	488803.889	7476904.112	310.818	2-Apr-09	249	-90	0	199	204	5	205	1,027
INCR147	488803.889	7476904.112	310.818	2-Apr-09	249	-90	0	208	221	13	625	8,125
INCR147	488803.889	7476904.112	310.818	2-Apr-09	249	-90	0	224	241	17	606	10,304
INCR148	488499.991	7476949.992	307.797	1-Apr-09	300	-90	0	3	4	2	268	415
INCR148	488499.991	7476949.992	307.797	1-Apr-09	300	-90	0	34	37	4	103	360
INCR148	488499.991	7476949.992	307.797	1-Apr-09	300	-90	0	41	44	3	101	267

Hole *	UTM East	UTM North	RL	Date End	TD	DIP	AZ UTM	From	To	Interval	eU3O8	GTM
INCR148	488499.991	7476949.992	307.797	1-Apr-09	300	-90	0	53	69	16	142	2,339
INCR148	488499.991	7476949.992	307.797	1-Apr-09	300	-90	0	137	140	2	119	285
INCR148	488499.991	7476949.992	307.797	1-Apr-09	300	-90	0	235	236	1	107	155
INCR149	488599.989	7476950.013	308.727	7-Apr-09	252	-90	0	19	26	7	134	935
INCR149	488599.989	7476950.013	308.727	7-Apr-09	252	-90	0	31	33	2	159	319
INCR149	488599.989	7476950.013	308.727	7-Apr-09	252	-90	0	39	55	16	147	2,346
INCR149	488599.989	7476950.013	308.727	7-Apr-09	252	-90	0	88	101	13	183	2,376
INCR149	488599.989	7476950.013	308.727	7-Apr-09	252	-90	0	108	112	4	194	777
INCR149	488599.989	7476950.013	308.727	7-Apr-09	252	-90	0	116	125	9	307	2,764
INCR149	488599.989	7476950.013	308.727	7-Apr-09	252	-90	0	140	141	1	127	127
INCR149	488599.989	7476950.013	308.727	7-Apr-09	252	-90	0	144	148	4	133	532
INCR149	488599.989	7476950.013	308.727	7-Apr-09	252	-90	0	153	154	1	149	149
INCR149	488599.989	7476950.013	308.727	7-Apr-09	252	-90	0	157	160	3	463	1,388
INCR149	488599.989	7476950.013	308.727	7-Apr-09	252	-90	0	169	172	3	139	418
INCR149	488599.989	7476950.013	308.727	7-Apr-09	252	-90	0	178	183	5	103	515
INCR149	488599.989	7476950.013	308.727	7-Apr-09	252	-90	0	186	187	1	137	137
INCR150R	488745	7476950	317	25-Apr-09	276	-90	0	22	25	3	135	406
INCR150R	488745	7476950	317	25-Apr-09	276	-90	0	41	42	1	213	213
INCR150R	488745	7476950	317	25-Apr-09	276	-90	0	83	87	4	266	1,065
INCR150R	488745	7476950	317	25-Apr-09	276	-90	0	101	103	2	376	752
INCR150R	488745	7476950	317	25-Apr-09	276	-90	0	233	241	8	1,243	9,947
INCR150R	488745	7476950	317	25-Apr-09	276	-90	0	247	262	15	455	6,819
INCR150R	488745	7476950	317	25-Apr-09	276	-90	0	265	268	3	145	435
INCR152	488700.016	7476949.987	309.922	17-Apr-09	270	-90	0	56	62	6	176	1,054
INCR152	488700.016	7476949.987	309.922	17-Apr-09	270	-90	0	77	80	3	479	1,436
INCR152	488700.016	7476949.987	309.922	17-Apr-09	270	-90	0	88	89	1	105	105
INCR152	488700.016	7476949.987	309.922	17-Apr-09	270	-90	0	103	104	1	109	109
INCR152	488700.016	7476949.987	309.922	17-Apr-09	270	-90	0	163	167	4	102	408

Hole *	UTM East	UTM North	RL	Date End	TD	DIP	AZ UTM	From	To	Interval	eU3O8	GTM
INCR152	488700.016	7476949.987	309.922	17-Apr-09	270	-90	0	177	178	1	115	115
INCR152	488700.016	7476949.987	309.922	17-Apr-09	270	-90	0	204	208	4	229	917
INCR152	488700.016	7476949.987	309.922	17-Apr-09	270	-90	0	211	243	32	1,226	39,232
INCR152	488700.016	7476949.987	309.922	17-Apr-09	270	-90	0	244	253	9	619	5,567
INCR152	488700.016	7476949.987	309.922	17-Apr-09	270	-90	0	256	262	6	836	5,016
INCR152	488700.016	7476949.987	309.922	17-Apr-09	270	-90	0	266	267	1	124	124
INCR156	488750.01	7476899.996	310.403	9-Apr-09	270	-90	0	13	16	3	231	692
INCR156	488750.01	7476899.996	310.403	9-Apr-09	270	-90	0	25	30	5	171	856
INCR156	488750.01	7476899.996	310.403	9-Apr-09	270	-90	0	37	41	4	154	617
INCR156	488750.01	7476899.996	310.403	9-Apr-09	270	-90	0	45	48	3	109	326
INCR156	488750.01	7476899.996	310.403	9-Apr-09	270	-90	0	63	64	1	191	191
INCR156	488750.01	7476899.996	310.403	9-Apr-09	270	-90	0	149	150	1	120	120
INCR156	488750.01	7476899.996	310.403	9-Apr-09	270	-90	0	171	177	6	100	601
INCR156	488750.01	7476899.996	310.403	9-Apr-09	270	-90	0	189	190	1	281	281
INCR156	488750.01	7476899.996	310.403	9-Apr-09	270	-90	0	199	202	3	316	948
INCR156	488750.01	7476899.996	310.403	9-Apr-09	270	-90	0	207	217	10	707	7,071
INCR156	488750.01	7476899.996	310.403	9-Apr-09	270	-90	0	222	251	29	547	15,851
INCR156	488750.01	7476899.996	310.403	9-Apr-09	270	-90	0	252	253	1	205	205
INCR156	488750.01	7476899.996	310.403	9-Apr-09	270	-90	0	256	257	1	107	107
INCR157	488549.996	7476749.987	308.65	17-Apr-09	191	-90	0	62	64	2	730	1,460
INCR157	488549.996	7476749.987	308.65	17-Apr-09	191	-90	0	68	74	6	298	1,789
INCR157	488549.996	7476749.987	308.65	17-Apr-09	191	-90	0	78	83	5	391	1,956
INCR157	488549.996	7476749.987	308.65	17-Apr-09	191	-90	0	90	91	1	192	192
INCR157	488549.996	7476749.987	308.65	17-Apr-09	191	-90	0	128	129	1	102	102
INCR157	488549.996	7476749.987	308.65	17-Apr-09	191	-90	0	169	173	4	103	413
INCR158	488599.988	7476750.007	308.576	20-Apr-09	211	-90	0	41	61	20	528	10,568
INCR158	488599.988	7476750.007	308.576	20-Apr-09	211	-90	0	70	75	5	279	1,395
INCR158	488599.988	7476750.007	308.576	20-Apr-09	211	-90	0	92	93	1	112	112

Hole *	UTM East	UTM North	RL	Date End	TD	DIP	AZ UTM	From	To	Interval	eU3O8	GTM
INCR158	488599.988	7476750.007	308.576	20-Apr-09	211	-90	0	96	101	5	170	848
INCR158	488599.988	7476750.007	308.576	20-Apr-09	211	-90	0	127	128	1	153	153
INCR159	488643	7476746	318	22-Apr-09	211	-90	0	80	81	1	190	190
INCR159	488643	7476746	318	22-Apr-09	211	-90	0	94	98	4	272	1,089
INCR159	488643	7476746	318	22-Apr-09	211	-90	0	101	102	1	130	130
INCR159	488643	7476746	318	22-Apr-09	211	-90	0	149	150	1	178	178
INCR159	488643	7476746	318	22-Apr-09	211	-90	0	153	157	4	193	772
INCR159	488643	7476746	318	22-Apr-09	211	-90	0	167	178	11	118	1,295
INCR160	488694	7476743	317	25-Apr-09	243	-90	0	69	71	2	107	214
INCR160	488694	7476743	317	25-Apr-09	243	-90	0	76	77	1	108	108
INCR160	488694	7476743	317	25-Apr-09	243	-90	0	81	90	9	1,917	17,256
INCR160	488694	7476743	317	25-Apr-09	243	-90	0	100	101	1	128	128
INCR160	488694	7476743	317	25-Apr-09	243	-90	0	123	130	7	219	1,533
INCR160	488694	7476743	317	25-Apr-09	243	-90	0	133	140	7	220	1,541
INCR160	488694	7476743	317	25-Apr-09	243	-90	0	148	153	5	103	513
INCR160	488694	7476743	317	25-Apr-09	243	-90	0	164	167	3	406	1,218
INCR160	488694	7476743	317	25-Apr-09	243	-90	0	178	186	8	157	1,258
INCR160	488694	7476743	317	25-Apr-09	243	-90	0	193	195	2	103	206
INCR160	488694	7476743	317	25-Apr-09	243	-90	0	197	198	1	116	116
INCR160	488694	7476743	317	25-Apr-09	243	-90	0	210	211	1	336	336
INCR160	488694	7476743	317	25-Apr-09	243	-90	0	215	216	1	182	182
INCR160	488694	7476743	317	25-Apr-09	243	-90	0	227	228	1	177	177
INCR165	488893	7476643	319	6-Apr-09	225	-60	180	21	22	1	199	199
INCR165	488893	7476643	319	6-Apr-09	225	-60	180	25	40	15	179	2,682
INCR165	488893	7476643	319	6-Apr-09	225	-60	180	50	55	5	130	648
INCR165	488893	7476643	319	6-Apr-09	225	-60	180	67	77	10	279	2,793
INCR165	488893	7476643	319	6-Apr-09	225	-60	180	83	84	1	120	120
INCR165	488893	7476643	319	6-Apr-09	225	-60	180	94	95	1	322	322

Hole *	UTM East	UTM North	RL	Date End	TD	DIP	AZ UTM	From	To	Interval	eU3O8	GTM
INCR165	488893	7476643	319	6-Apr-09	225	-60	180	98	113	15	311	4,666
INCR165	488893	7476643	319	6-Apr-09	225	-60	180	115	119	4	169	677
INCR165	488893	7476643	319	6-Apr-09	225	-60	180	125	130	5	198	988
INCR165	488893	7476643	319	6-Apr-09	225	-60	180	140	142	2	229	458
INCR165	488893	7476643	319	6-Apr-09	225	-60	180	154	165	11	158	1,741
INCR165	488893	7476643	319	6-Apr-09	225	-60	180	188	189	1	134	134
INCR166	488800.005	7476850	310.832	15-Apr-09	273	-90	0	136	140	4	140	558
INCR166	488800.005	7476850	310.832	15-Apr-09	273	-90	0	144	157	13	984	12,790
INCR166	488800.005	7476850	310.832	15-Apr-09	273	-90	0	162	166	4	140	561
INCR166	488800.005	7476850	310.832	15-Apr-09	273	-90	0	179	185	6	352	2,111
INCR166	488800.005	7476850	310.832	15-Apr-09	273	-90	0	188	200	12	203	2,439
INCR166	488800.005	7476850	310.832	15-Apr-09	273	-90	0	203	204	1	342	342
INCR166	488800.005	7476850	310.832	15-Apr-09	273	-90	0	210	218	8	181	1,445
INCR166	488800.005	7476850	310.832	15-Apr-09	273	-90	0	221	223	2	614	1,227
INCR166	488800.005	7476850	310.832	15-Apr-09	273	-90	0	230	234	4	290	1,159
INCR166	488800.005	7476850	310.832	15-Apr-09	273	-90	0	241	242	1	179	179
INCR166	488800.005	7476850	310.832	15-Apr-09	273	-90	0	253	254	1	176	176
INCR167	488750.001	7476849.997	310.468	18-Apr-09	249	-90	0	34	35	1	106	106
INCR167	488750.001	7476849.997	310.468	18-Apr-09	249	-90	0	115	116	1	164	164
INCR167	488750.001	7476849.997	310.468	18-Apr-09	249	-90	0	150	151	1	219	219
INCR167	488750.001	7476849.997	310.468	18-Apr-09	249	-90	0	154	157	3	118	353
INCR167	488750.001	7476849.997	310.468	18-Apr-09	249	-90	0	163	170	7	329	2,306
INCR167	488750.001	7476849.997	310.468	18-Apr-09	249	-90	0	178	183	5	545	2,726
INCR167	488750.001	7476849.997	310.468	18-Apr-09	249	-90	0	195	205	10	747	7,474
INCR167	488750.001	7476849.997	310.468	18-Apr-09	249	-90	0	208	210	2	265	529
INCR167	488750.001	7476849.997	310.468	18-Apr-09	249	-90	0	219	227	8	149	1,188
INCR167	488750.001	7476849.997	310.468	18-Apr-09	249	-90	0	237	238	1	188	188
INCR168	488695	7476844	314	23-Apr-09	201	-90	0	35	39	4	248	993

For personal use only

Hole *	UTM East	UTM North	RL	Date End	TD	DIP	AZ UTM	From	To	Interval	eU3O8	GTM
INCR168	488695	7476844	314	23-Apr-09	201	-90	0	48	50	2	123	246
INCR168	488695	7476844	314	23-Apr-09	201	-90	0	57	59	2	134	267
INCR168	488695	7476844	314	23-Apr-09	201	-90	0	97	98	1	149	149
INCR168	488695	7476844	314	23-Apr-09	201	-90	0	103	104	1	121	121
INCR168	488695	7476844	314	23-Apr-09	201	-90	0	110	112	2	294	588
INCR168	488695	7476844	314	23-Apr-09	201	-90	0	146	147	1	121	121
INCR168	488695	7476844	314	23-Apr-09	201	-90	0	163	164	1	104	104
INCR168	488695	7476844	314	23-Apr-09	201	-90	0	173	178	5	638	3,191
INCR168	488695	7476844	314	23-Apr-09	201	-90	0	195	200	5	442	2,210
INCR169	488646	7476845	315	25-Apr-09	201	-90	0	27	28	1	148	148
INCR169	488646	7476845	315	25-Apr-09	201	-90	0	32	33	1	186	186
INCR169	488646	7476845	315	25-Apr-09	201	-90	0	46	49	3	237	712
INCR169	488646	7476845	315	25-Apr-09	201	-90	0	60	61	1	643	643
INCR169	488646	7476845	315	25-Apr-09	201	-90	0	109	121	12	354	4,245
INCR169	488646	7476845	315	25-Apr-09	201	-90	0	137	140	3	198	595
INCR169	488646	7476845	315	25-Apr-09	201	-90	0	146	151	5	186	929
INCR169	488646	7476845	315	25-Apr-09	201	-90	0	157	159	2	595	1,189
INCR169	488646	7476845	315	25-Apr-09	201	-90	0	169	172	3	331	994
INCR169	488646	7476845	315	25-Apr-09	201	-90	0	175	196	21	639	13,419
INCR501	490150.014	7479100.009	321.396	11-Mar-09	243	-90	0	94	103	9	132	1,231
INCR501	490150.014	7479100.009	321.396	11-Mar-09	243	-90	0	104	106	3	159	406
INCR501	490150.014	7479100.009	321.396	11-Mar-09	243	-90	0	109	118	8	112	921
INCR501	490150.014	7479100.009	321.396	11-Mar-09	243	-90	0	121	125	4	104	385
INCR501	490150.014	7479100.009	321.396	11-Mar-09	243	-90	0	134	136	3	185	482
INCR501	490150.014	7479100.009	321.396	11-Mar-09	243	-90	0	153	158	5	105	531
INCR501	490150.014	7479100.009	321.396	11-Mar-09	243	-90	0	159	168	9	136	1,205
INCR501	490150.014	7479100.009	321.396	11-Mar-09	243	-90	0	208	210	1	128	179
INCR501	490150.014	7479100.009	321.396	11-Mar-09	243	-90	0	241	242	1	170	187

For personal use only

Hole *	UTM East	UTM North	RL	Date End	TD	DIP	AZ UTM	From	To	Interval	eU3O8	GTM
INCR506	498000.014	7483000.009	421.942	19-Mar-09	250	-90	0	0	4	4	167	736
INCR506	498000.014	7483000.009	421.942	19-Mar-09	250	-90	0	203	204	1	103	103
INCR506	498000.014	7483000.009	421.942	19-Mar-09	250	-90	0	237	240	3	122	323
INCR711	496400.01	7481499.997	389.671	20-Mar-09	31	-90	0	21	22	1	134	140
INCR712	496400.009	7481450.011	389.891	18-Mar-09	43	-90	0	20	24	4	133	487
INCR713	496399.995	7481399.998	390.037	20-Mar-09	34	-90	0	19	22	3	155	504
INCR714	496400.01	7481349.999	390.201	18-Mar-09	37	-90	0	19	23	5	147	726
INCR724	496400.022	7480850.013	391.292	19-Mar-09	34	-90	0	15	19	4	104	431
INCR728	496399.987	7480649.993	391.758	19-Mar-09	25	-90	0	14	17	3	122	380
INCR730	496400.011	7480549.992	391.74	19-Mar-09	19	-90	0	11	13	2	181	344

For personal use only